



NEW ARMATREE
— BORDER LEICESTERS —

11th ON PROPERTY RAM SALE

**Thursday, 12th September
2019**

Sale commencing @ 1pm

72 Flock Rams

Entire offering above breed average for BLX

**Contact Craig or Jenny 0428 422 234
newarmatree.com.au**



NEW ARMATREE 11th ON PROPERTY FLOCK RAM SALE

Thursday 12th September

@ 1pm

Offering

72

Performance tested

Vet Checked Rams

Flock Number 4786

Inspection from 11am

Complimentary BBQ lunch 12 noon

Auction 1pm

Selling Agent: Steve Colwell

Halcroft & Bennett

2% Rebate to outside agents

a/c Craig & Jenny Bradley

Tel: 02 68485968 Mob: 0428 422234

Breeding Advisor: Ashley White

Mobile: 0411139654

Welcome

To our 11th on property ram sale.

We continue to increase the number of rams we produce each year. 2018 was a difficult year all round, however we managed to produce higher lamb numbers. The majority of these lambs are above breed average for BLX Index. We have taken into consideration the seasonal conditions and ewe numbers of our ram buyers and we made the decision to reduce the offering to 72 rams. The rams on offer are the top of the rams we bred in 2018.

We have always had as one of our unwritten breeding objectives to offer a full catalogue of Superborder rams and this year we have achieved this objective comfortably with quality rams remaining in the paddock. A number of initiatives which we have implemented have been driving the increased rate of genetic gain across our flock. The use of young sires within the joining program and use of Matesel are two such initiatives.

We can now offer an all weather sale venue with a new shed over the yards to accommodate all sale rams. In those years when weather is unfavourable, we will be offering all sale rams under cover at New Armatree.

We are still showing sheep in conjunction with Gilgandra High School students. This partnership exposes students to sheep handling skills and Australian Sheep Breeding Values, ASBVs. We again had a successful showing at the local shows plus the NSW State Sheep Show at Dubbo.

We hope to see some familiar faces at the sale even if it is only to sample the BBQ or for a catch up. It is important to get out in times like we are currently experiencing and ask, Are You Ok?

Jenny and Craig Bradley

Please bring this catalogue with you on sale day.





‘New Armatree’ Health Record

‘New Armatree’ is within the
Coonamble Biosecurity Zone

Brucellosis Flock Accreditation No.....Cw 99/17
Expiry Date.....August 2022

Vaccinated with 6 in1 at marking and weaning
Last vaccination 11th August, 2019

Shorn 10th June 2019

These rams have had a worm egg count on 15th
August, 2019 and returned a zero egg count.

We recommend that you quarantine drench your
rams when you get them home, according to your
drench resistance and rotation program.

All rams have had no feet trimming,
feet are untouched.

Rams are presented in pens for sale
with no straw.

All Rams Vet inspected and checked:
Tuesday 10th September, 2019
by Dr Nadine Allan, Gilgandra Veterinary Clinic.





Memorandum of Sires used at 'New Armatree' in the 2018 Breeding Season

- **New Armatree 2015/0070 (F8919)** Blue disks
Sire: New Armatree Australis 2013/0021 (F6059)
- **New Armatree 2016/0146 (F8920)** Black disks
Sire: New Armatree 2015/0026 (F7998)
- **New Armatree 2016/0324 (F9458)** Red disks
Sire: Jackson Smooth Criminal 2014/0095 (F7973)
- **New Armatree 2016/0093 (F9467)** Black disks
Sire: New Armatree 2015/0023 (F7997)
- **New Armatree 2016/0083 (F9456)** Pink disks
Sire: Hanookra 2014/0132 (F7618)
- **Gleneith 2016/0329 (F9165)** Green disks
Sire: Gleneith 2013/0103 (F7280)
- **New Armatree 2015/0026 (F7998)** Black disks
Sire: Two Dot Hurricane 2013/0429 (F7012)
- **New Armatree 2017/0287 (F9459)** Blue disks
Sire: New Armatree 2015/0070 (F8919)

Sale Catalogue Averages and Trends

To assist you with your selection, we have included the following table which shows the catalogue average value for all traits along with the highest and lowest figure in the catalogue for that trait.

For your interest, we have also included the averages from the past two catalogues so you can monitor the genetic trends of the sale rams we present each year.

| Catalogue | Bwt | Mwwt | Pwwt | Pfat | Pemd | NLW % | BLX |
|--------------|-----|------|------|------|------|-------|-------|
| Highest 2019 | 0.5 | 1.7 | 12.5 | 3.6 | 2.2 | 21.0 | 141.1 |
| Lowest 2019 | 0.1 | -0.9 | 3.5 | -1.1 | -0.5 | 3.0 | 117.6 |
| Average 2019 | 0.3 | 0.5 | 7.7 | 0.4 | 0.9 | 10.3 | 125.8 |
| Average 2018 | 0.3 | 0.3 | 7.1 | -0.2 | 0.5 | 10.0 | 121.6 |
| Average 2017 | 0.3 | 0.3 | 6.9 | 0.0 | 0.4 | 8.9 | 119.2 |

The 2019 SuperBorder cut off BLX Index figure is 117.3. ALL rams in this catalogue are **above** 117.3 for BLX and therefore are **Superborders**. - Those ASBVs marked with an * indicate the animal is in the **top 20%** of the breed for that particular trait. If you would like to discuss these ASBVs further, please ask us on sale day.

Inside the back cover of the catalogue you will find a **Percentile Report**. On this report are a range of trait figures from the top of the breed to the bottom of the breed. The 50 percentile band is close to the average for the breed. Use this chart to check where animals fit within the breed for particular traits and index.

The BLX Index

This is a **Border Leicester Crossing Index** and has been designed by Lambplan to better reflect the desired traits for first cross ewe production.

Within the **BLX Index** there is more emphasis placed on the maternal traits such as maternal weaning weight and Number of Lambs Weaned (NLW) as well as early growth while capping adult ewe weights. The BLX Index can not and should not be compared to the Maternal \$ Index you might see in other publications.

Coloured Ear Tags and Disks

While all sale rams have orange numbered ear tags (year of birth, white = 2018), you will also notice a coloured disk on the back of the tag. This coloured disk represents the ram's sire line. We use sires introduced from other studs as well as sires we have bred ourselves. They all carry the colour of the original introduced sire so we can easily identify which line they belong to. Listed below are the colours we have used for this drop of rams and the corresponding sire line. The sire line colours are also noted in the Memorandum of Sires.

Black = Two Dot Red = Jackson
Blue = Johnos Pink = Hanookra Green = Gleneith



Lot 1 - Tag 231

| Lot 1 | | Tag No. 231 | | Twin | | Sire NA 16-0093 | |
|-------------|------------|-------------|------------|------------|------------|-----------------|------------|
| Bwt | <i>Acc</i> | MWwt | <i>Acc</i> | Wwt | <i>Acc</i> | Pwt | <i>Acc</i> |
| 0.4 | 67% | 0.4 | 43% | 4.8 | 68% | 7.7 | 69% |
| Pfat | <i>Acc</i> | Pemd | <i>Acc</i> | NLW | <i>Acc</i> | BLX | <i>Acc</i> |
| 2.0* | 69% | 1.0* | 67% | 7 | 35% | 120.6 | 42% |

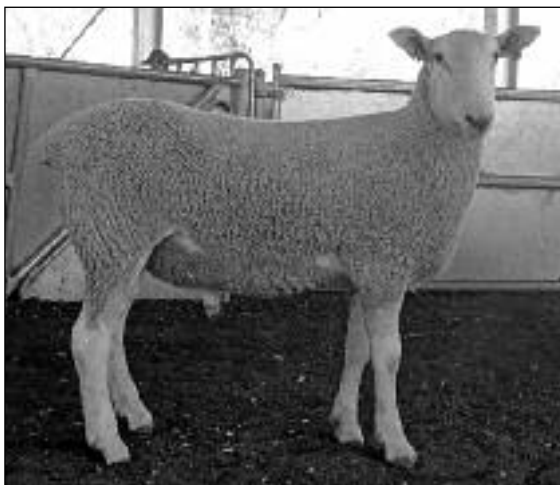
Purchaser _____ \$ _____

| Lot 2 | | Tag No. 182 | | Twin | | Sire NA 16-0324 | |
|-------------|------------|-------------|------------|------------|------------|-----------------|------------|
| Bwt | <i>Acc</i> | MWwt | <i>Acc</i> | Wwt | <i>Acc</i> | Pwt | <i>Acc</i> |
| 0.2* | 62% | 0.6 | 45% | 4.5 | 69% | 7.5 | 69% |
| Pfat | <i>Acc</i> | Pemd | <i>Acc</i> | NLW | <i>Acc</i> | BLX | <i>Acc</i> |
| 1.5* | 70% | -0.5 | 67% | 11 | 39% | 119.3 | 44% |

Purchaser _____ \$ _____

| Lot 3 | | Tag No. 71 | | Twin | | Sire NA 16-0083 | |
|-------------|------------|-------------|------------|------------|------------|-----------------|------------|
| Bwt | <i>Acc</i> | MWwt | <i>Acc</i> | Wwt | <i>Acc</i> | Pwt | <i>Acc</i> |
| 0.5 | 61% | 0.6 | 44% | 5.1 | 69% | 7.7 | 69% |
| Pfat | <i>Acc</i> | Pemd | <i>Acc</i> | NLW | <i>Acc</i> | BLX | <i>Acc</i> |
| 1.7* | 69% | 1.0* | 62% | 9 | 35% | 125.3 | 41% |

Purchaser _____ \$ _____



Lot 4 - Tag 180

| Lot 4 | | Tag No. 180 | | Twin | | Sire NA 16-0324 | |
|-------------|------------|-------------|------------|------------|------------|-----------------|------------|
| Bwt | <i>Acc</i> | MWwt | <i>Acc</i> | Wwt | <i>Acc</i> | Pwt | <i>Acc</i> |
| 0.3 | 67% | 1.6* | 43% | 6.0 | 68% | 8.9 | 69% |
| Pfat | <i>Acc</i> | Pemd | <i>Acc</i> | NLW | <i>Acc</i> | BLX | <i>Acc</i> |
| 0.8* | 69% | -0.1 | 68% | 9 | 36% | 127.1 | 42% |

Purchaser _____ \$ _____

| Lot 5 | | Tag No. 229 | | Twin | | Sire NA 15-0070 | |
|-------------|------------|-------------|------------|------------|------------|-----------------|------------|
| Bwt | <i>Acc</i> | MWwt | <i>Acc</i> | Wwt | <i>Acc</i> | Pwt | <i>Acc</i> |
| 0.4 | 65% | 0.3 | 44% | 5.4 | 71% | 8.8 | 71% |
| Pfat | <i>Acc</i> | Pemd | <i>Acc</i> | NLW | <i>Acc</i> | BLX | <i>Acc</i> |
| -0.8 | 71% | 0.9* | 68% | 10 | 38% | 127.2 | 43% |

Purchaser _____ \$ _____

| Lot 6 | | 2% | | Twin | | Sire NA 15-0070 | |
|-------------|------------|-------------|------------|------------|------------|-----------------|------------|
| Bwt | <i>Acc</i> | MWwt | <i>Acc</i> | Wwt | <i>Acc</i> | Pwt | <i>Acc</i> |
| 0.4 | 64% | -0.6 | 43% | 6.0 | 70% | 9.9* | 70% |
| Pfat | <i>Acc</i> | Pemd | <i>Acc</i> | NLW | <i>Acc</i> | BLX | <i>Acc</i> |
| 0.3* | 69% | 1.6* | 67% | 13 | 36% | 128.9* | 4% |

Purchaser _____ \$ _____

| Lot 7 | | Tag No. 39 | | Twin | | Sire GL 16-0329 | |
|-------|-----|------------|-----|------|-----|-----------------|-----|
| Bwt | Acc | MWwt | Acc | Wwt | Acc | Pwt | Acc |
| 0.2* | 62% | 0.7 | 49% | 4.9 | 69% | 8.0 | 69% |
| Pfat | Acc | Pemd | Acc | NLW | Acc | BLX | Acc |
| -0.3 | 69% | 1.1* | 67% | 10 | 38% | 128.4 | 43% |

Purchaser _____ \$ _____



Lot 8 - Tag 398

| Lot 8 | | Tag No. 398 | | Twin | | Sire GL 16-0329 | |
|-------|-----|-------------|-----|------|------|-----------------|-----|
| Bwt | Acc | MWwt | Acc | Wwt | Acc | Pwt | Acc |
| 0.4 | 62% | 1.4* | 44% | 6.6* | 69% | 10* | 69% |
| Pfat | Acc | Pemd | Acc | NLW | Acc | BLX | Acc |
| -0.5 | 68% | 0.7 | 66% | 6 | 37&% | 126.7 | 42% |

Purchaser _____ \$ _____

| Lot 9 | | Tag No. 95 | | Twin | | Sire NA 15-0070 | |
|-------|-----|------------|-----|------|-----|-----------------|-----|
| Bwt | Acc | MWwt | Acc | Wwt | Acc | Pwt | Acc |
| 0.4 | 64% | -0.3 | 45% | 5.7 | 70% | 9.1 | 70% |
| Pfat | Acc | Pemd | Acc | NLW | Acc | BLX | Acc |
| -0.4 | 70% | 0.8* | 68% | 15* | 37% | 129.9* | 43% |

Purchaser _____ \$ _____



Lot 10 - Tag 323

| Lot 10 | | Tag No. 323 | | Twin | | Sire NA 15-0070 | |
|-------------|------------|-------------|------------|------------|------------|-----------------|------------|
| Bwt | <i>Acc</i> | MWwt | <i>Acc</i> | Wwt | <i>Acc</i> | Pwt | <i>Acc</i> |
| 0.4 | 63% | -0.1 | 42% | 5.9 | 70% | 9.6* | 70% |
| Pfat | <i>Acc</i> | Pemd | <i>Acc</i> | NLW | <i>Acc</i> | BLX | <i>Acc</i> |
| 1.4* | 70% | 1.2* | 67% | 13 | 37% | 131.3* | 42% |

Purchaser _____ \$ _____



Lot 11 - Tag 49

| Lot 11 | | Tag No. 49 | | Twin | | Sire NA 16-0093 | |
|-------------|------------|-------------|------------|------------|------------|-----------------|------------|
| Bwt | <i>Acc</i> | MWwt | <i>Acc</i> | Wwt | <i>Acc</i> | Pwt | <i>Acc</i> |
| 0.2* | 64% | 0.4 | 45% | 4.7 | 70% | 8.3 | 71% |
| Pfat | <i>Acc</i> | Pemd | <i>Acc</i> | NLW | <i>Acc</i> | BLX | <i>Acc</i> |
| 2.6* | 71% | 1.4* | 68% | 20* | 37% | 139.6* | 43% |

Purchaser _____ \$ _____



Australian Sheep Breeding Values

All ASBV's and Indexes used in this catalogue are based on the Sheep Genetics Australia Lambplan Maternal run on 15th August, 2019.

Bwt: Birth Weight – estimates the genetic difference between animals in live weight at birth. *Measured in kg.*

Mwwt: Maternal Weaning Weight – gives an estimate of the female progeny's potential to provide a good maternal environment for her lambs (includes milking ability). *Measured in kg.*

Pwwt: Post Weaning Weight – gives an estimate of the genetic difference in live weight gain between weaning and 8 - 10 months of age. A good indicator of the progeny's ability to grow after weaning to market weights. *Measured in kg.*

Pfat: Post Weaning Fat – estimate of the genetic difference in fat depth at 8-10 months of age. *Measured in mm.*

Pemd: Post Weaning Eye Muscle Depth – estimate of the genetic difference in eye muscle depth at the C site (loin) at 8-10 months of age. *Measured in mm.*

NLW: Number of Lambs Weaned (%) – estimates the genetic difference between female progeny of a ram for the number of lambs weaned at each lambing opportunity. *Expressed as a percentage of the average of animals in the database in 1990.*

BLX Index: Border Leicester Crossing Index – indicates the value of an animal based on its suitability for first cross ewe production. *The BLX Index is comprised of ASBVs focussing on maternal and growth traits.*

Acc: Accuracies – have been included for all ASBVs and Index. Accuracies are a reflection of the amount of information available about each animal. As the amount of information increases, so too does the accuracy. We are very proud of the amount and quality of the data we collect and are extremely pleased with the consistent and high accuracies we achieve.



Lot 12 - Tag 7

| Lot 12 | | Tag No. 7 | | Twin | | Sire GL 16-0329 | |
|-------------|------------|-------------|------------|-------------|------------|-----------------|------------|
| Bwt | <i>Acc</i> | MWwt | <i>Acc</i> | Wwt | <i>Acc</i> | Pwt | <i>Acc</i> |
| 0.3 | 62% | 0.6 | 48% | 7.9* | 69% | 10.9* | 70% |
| Pfat | <i>Acc</i> | Pemd | <i>Acc</i> | NLW | <i>Acc</i> | BLX | <i>Acc</i> |
| -0.5 | 68% | 0.7 | 67% | 18* | 39% | 139.7* | 44% |

Purchaser _____ \$ _____

| Lot 13 | | Tag No. 410 | | Twin | | Sire GL 16-0329 | |
|-------------|------------|-------------|------------|-------------|------------|-----------------|------------|
| Bwt | <i>Acc</i> | MWwt | <i>Acc</i> | Wwt | <i>Acc</i> | Pwt | <i>Acc</i> |
| 0.3 | 62% | 1.4* | 47% | 6.2* | 69% | 9.6* | 69% |
| Pfat | <i>Acc</i> | Pemd | <i>Acc</i> | NLW | <i>Acc</i> | BLX | <i>Acc</i> |
| -0.4 | 68% | 0.5 | 67% | 10 | 38% | 130.4* | 43% |

Purchaser _____ \$ _____

| Lot 14 | | Tag No. 107 | | Twin | | Sire GL 16-0329 | |
|-------------|------------|-------------|------------|-------------|------------|-----------------|------------|
| Bwt | <i>Acc</i> | MWwt | <i>Acc</i> | Wwt | <i>Acc</i> | Pwt | <i>Acc</i> |
| 0.5 | 61% | 0.7 | 45% | 8.5* | 68% | 12.5* | 69% |
| Pfat | <i>Acc</i> | Pemd | <i>Acc</i> | NLW | <i>Acc</i> | BLX | <i>Acc</i> |
| -0.1 | 69% | 0.9* | 67% | 11 | 38% | 134* | 43% |

Purchaser _____ \$ _____

| Lot 15 | | Tag No. 99 | | Twin | | Sire NA 16-0324 | |
|-------------|------------|-------------|------------|------------|------------|-----------------|------------|
| Bwt | <i>Acc</i> | MWwt | <i>Acc</i> | Wwt | <i>Acc</i> | Pwt | <i>Acc</i> |
| 0.1* | 63% | 0.3 | 46% | 3.5 | 69% | 6.2 | 70% |
| Pfat | <i>Acc</i> | Pemd | <i>Acc</i> | NLW | <i>Acc</i> | BLX | <i>Acc</i> |
| 0.4* | 70% | 0.3 | 67% | 17* | 38% | 129.9* | 43% |

Purchaser _____ \$ _____

| Lot 16 | | Tag No. 35 | | Twin | | Sire NA 16-0324 | |
|-------------|------------|-------------|------------|-------------|------------|-----------------|------------|
| Bwt | <i>Acc</i> | MWwt | <i>Acc</i> | Wwt | <i>Acc</i> | Pwt | <i>Acc</i> |
| 0.3 | 62% | 1.4* | 47% | 6.2* | 69% | 9.3 | 69% |
| Pfat | <i>Acc</i> | Pemd | <i>Acc</i> | NLW | <i>Acc</i> | BLX | <i>Acc</i> |
| -0.3 | 69% | 0.3 | 67% | 18* | 38% | 141.1* | 43% |

Purchaser _____ \$ _____

| Lot 17 | | Tag No. 32 | | Twin | | Sire NA 16-0093 | |
|-------------|------------|-------------|------------|-------------|------------|-----------------|------------|
| Bwt | <i>Acc</i> | MWwt | <i>Acc</i> | Wwt | <i>Acc</i> | Pwt | <i>Acc</i> |
| 0.2* | 64% | 0.6 | 46% | 6.3* | 71% | 10.8* | 71% |
| Pfat | <i>Acc</i> | Pemd | <i>Acc</i> | NLW | <i>Acc</i> | BLX | <i>Acc</i> |
| 1.1* | 71% | 1.4* | 69% | 15* | 37% | 138.1* | 43% |

Purchaser _____ \$ _____

| Lot 18 | | Tag No. 27 | | Twin | | Sire NA 16-0093 | |
|-------------|------------|-------------|------------|------------|------------|-----------------|------------|
| Bwt | <i>Acc</i> | MWwt | <i>Acc</i> | Wwt | <i>Acc</i> | Pwt | <i>Acc</i> |
| 0.2* | 64% | 0.9 | 43% | 5.1 | 70% | 8.1 | 71% |
| Pfat | <i>Acc</i> | Pemd | <i>Acc</i> | NLW | <i>Acc</i> | BLX | <i>Acc</i> |
| 1.9* | 71% | 1.3* | 68% | 17* | 37% | 135.1* | 43% |

Purchaser _____ \$ _____

| Lot 19 | | Tag No. 240 | | Twin | | Sire NA 16-0093 | |
|-------------|------------|-------------|------------|------------|------------|-----------------|------------|
| Bwt | <i>Acc</i> | MWwt | <i>Acc</i> | Wwt | <i>Acc</i> | Pwt | <i>Acc</i> |
| 0.3 | 63% | -0.9 | 43% | 3.8 | 70% | 7.8 | 70% |
| Pfat | <i>Acc</i> | Pemd | <i>Acc</i> | NLW | <i>Acc</i> | BLX | <i>Acc</i> |
| 1.8* | 70% | 1.3* | 67% | 21* | 36% | 133.9* | 42% |

Purchaser _____ \$ _____



Lot 20 - Tag 73

| Lot 20 | | Tag No. 73 | | Twin | | Sire NA 15-0070 | |
|-------------|------------|-------------|------------|------------|------------|-----------------|------------|
| Bwt | <i>Acc</i> | MWwt | <i>Acc</i> | Wwt | <i>Acc</i> | Pwt | <i>Acc</i> |
| 0.4 | 65% | 1.4* | 50% | 5.7 | 71% | 9.2 | 71% |
| Pfat | <i>Acc</i> | Pemd | <i>Acc</i> | NLW | <i>Acc</i> | BLX | <i>Acc</i> |
| 0.1 | 71% | 0.2 | 69% | 15* | 40% | 133.8* | 45% |

Purchaser _____ \$ _____

| Lot 21 | | Tag No. 347 | | Twin | | Sire GL 16-0329 | |
|-------------|------------|-------------|------------|------------|------------|-----------------|------------|
| Bwt | <i>Acc</i> | MWwt | <i>Acc</i> | Wwt | <i>Acc</i> | Pwt | <i>Acc</i> |
| 0.1* | 63% | 1.2* | 48% | 4.6 | 69% | 8.0 | 70% |
| Pfat | <i>Acc</i> | Pemd | <i>Acc</i> | NLW | <i>Acc</i> | BLX | <i>Acc</i> |
| 0.6* | 70% | 1.6* | 67% | 9 | 38% | 130.4* | 44% |

Purchaser _____ \$ _____

| Lot 22 | | Tag No. 48 | | Twin | | Sire NA 16-0093 | |
|-------------|------------|-------------|------------|------------|------------|-----------------|------------|
| Bwt | <i>Acc</i> | MWwt | <i>Acc</i> | Wwt | <i>Acc</i> | Pwt | <i>Acc</i> |
| 0.2* | 64% | 0.4 | 45% | 4.5 | 70% | 8.1 | 71% |
| Pfat | <i>Acc</i> | Pemd | <i>Acc</i> | NLW | <i>Acc</i> | BLX | <i>Acc</i> |
| 2.1* | 71% | 1.0* | 68% | 21* | 37% | 138.3* | 43% |

Purchaser _____ \$ _____

| Lot 23 | | Tag No. 10 | | Twin | | Sire NA 16-0093 | |
|--------|-----|------------|-----|------|-----|-----------------|-----|
| Bwt | Acc | MWwt | Acc | Wwt | Acc | Pwt | Acc |
| 0.1* | 62% | -0.7 | 41% | 4.9 | 69% | 8.2 | 69% |
| Pfat | Acc | Pemd | Acc | NLW | Acc | BLX | Acc |
| 0.9* | 68% | 2.1* | 67% | 16* | 35% | 132.6* | 41% |

Purchaser _____ \$ _____

| Lot 24 | | Tag No. 113 | | Twin | | Sire NA 16-0083 | |
|--------|-----|-------------|-----|------|-----|-----------------|-----|
| Bwt | Acc | MWwt | Acc | Wwt | Acc | Pwt | Acc |
| 0.5 | 61% | 0.3 | 43% | 6.6* | 68% | 9 | 69% |
| Pfat | Acc | Pemd | Acc | NLW | Acc | BLX | Acc |
| 0.9* | 69% | 1.5* | 66% | 8 | 35% | 126.2 | 41% |

Purchaser _____ \$ _____

| Lot 25 | | Tag No. 266 | | Twin | | Sire GL 16-0329 | |
|--------|-----|-------------|-----|------|-----|-----------------|-----|
| Bwt | Acc | MWwt | Acc | Wwt | Acc | Pwt | Acc |
| 0.2* | 62% | 0.9 | 47% | 4.3 | 69% | 6.4 | 69% |
| Pfat | Acc | Pemd | Acc | NLW | Acc | BLX | Acc |
| -0.1 | 69% | 0.6 | 67% | 9 | 38% | 119.8 | 43% |

Purchaser _____ \$ _____

| Lot 26 | | Tag No. 344 | | Twin | | Sire GL 16-0329 | |
|--------|-----|-------------|-----|------|-----|-----------------|-----|
| Bwt | Acc | MWwt | Acc | Wwt | Acc | Pwt | Acc |
| 0.4 | 61% | 1.0 | 44% | 5.2 | 68% | 7.9 | 68% |
| Pfat | Acc | Pemd | Acc | NLW | Acc | BLX | Acc |
| -0.1 | 67% | 1.0* | 65% | 9 | 37% | 128.4 | 42% |

Purchaser _____ \$ _____

| Lot 27 | | Tag No. 191 | | Twin | | Sire NA 16-0083 | |
|--------|-----|-------------|-----|------|-----|-----------------|-----|
| Bwt | Acc | MWwt | Acc | Wwt | Acc | Pwt | Acc |
| 0.3 | 63% | 1.7* | 48% | 3.6 | 70% | 5.8 | 71% |
| Pfat | Acc | Pemd | Acc | NLW | Acc | BLX | Acc |
| 1.5* | 71% | 1.0* | 68% | 6 | 38% | 123.6 | 44% |

Purchaser _____ \$ _____



Lot 28 - Tag 202

| Lot 28 | | Tag No. 202 | | Twin | | Sire NA 16-0083 | |
|-------------|------------|-------------|------------|------------|------------|-----------------|------------|
| Bwt | <i>Acc</i> | MWwt | <i>Acc</i> | Wwt | <i>Acc</i> | Pwt | <i>Acc</i> |
| 0.3 | 62% | 0.5 | 45% | 3.5 | 69% | 6.4 | 70% |
| Pfat | <i>Acc</i> | Pemd | <i>Acc</i> | NLW | <i>Acc</i> | BLX | <i>Acc</i> |
| 2.5* | 69% | 0.6 | 67% | 11 | 37% | 123.3 | 43% |

Purchaser _____ \$ _____

| Lot 29 | | Tag No. 123 | | Twin | | Sire GL 16-0329 | |
|-------------|------------|-------------|------------|------------|------------|-----------------|------------|
| Bwt | <i>Acc</i> | MWwt | <i>Acc</i> | Wwt | <i>Acc</i> | Pwt | <i>Acc</i> |
| 0.2* | 60% | 0.2 | 44% | 4.7 | 60% | 7.4 | 60% |
| Pfat | <i>Acc</i> | Pemd | <i>Acc</i> | NLW | <i>Acc</i> | BLX | <i>Acc</i> |
| -0.3 | 60% | 1.0* | 59% | 7 | 35% | 122.3 | 38% |

Purchaser _____ \$ _____

| Lot 30 | | Tag No. 11 | | Twin | | Sire NA 16-0093 | |
|-------------|------------|-------------|------------|------------|------------|-----------------|------------|
| Bwt | <i>Acc</i> | MWwt | <i>Acc</i> | Wwt | <i>Acc</i> | Pwt | <i>Acc</i> |
| 0.1* | 62% | -0.7 | 41% | 4.2 | 69% | 7.0 | 69% |
| Pfat | <i>Acc</i> | Pemd | <i>Acc</i> | NLW | <i>Acc</i> | BLX | <i>Acc</i> |
| 0.1 | 69% | 1.4* | 67% | 12 | 35% | 124.0 | 41% |

Purchaser _____ \$ _____



Lot 31 - Tag 188

| Lot 31 | | Tag No. 188 | | Twin | | Sire GL: 16-0329 | |
|-------------|------------|-------------|------------|-------------|------------|------------------|------------|
| Bwt | <i>Acc</i> | MWwt | <i>Acc</i> | Wwt | <i>Acc</i> | Pwt | <i>Acc</i> |
| 0.4 | 62% | 1.0 | 45% | 6.3* | 69% | 9.5* | 69% |
| Pfat | <i>Acc</i> | Pemd | <i>Acc</i> | NLW | <i>Acc</i> | BLX | <i>Acc</i> |
| 0.1 | 69% | 0.8* | 65% | 9 | 37% | 127.1 | 42% |

Purchaser _____ \$ _____

| Lot 32 | | Tag No. 388 | | Twin | | Sire NA 17-0287 | |
|-------------|------------|-------------|------------|------------|------------|-----------------|------------|
| Bwt | <i>Acc</i> | MWwt | <i>Acc</i> | Wwt | <i>Acc</i> | Pwt | <i>Acc</i> |
| 0.4 | 63% | 0.5 | 44% | 5.1 | 70% | 7.9 | 70% |
| Pfat | <i>Acc</i> | Pemd | <i>Acc</i> | NLW | <i>Acc</i> | BLX | <i>Acc</i> |
| -0.6 | 69% | 0.2 | 67% | 16* | 37% | 124.6 | 42% |

Purchaser _____ \$ _____

| Lot 33 | | Tag No. 327 | | Twin | | Sire NA 16-0146 | |
|-------------|------------|-------------|------------|------------|------------|-----------------|------------|
| Bwt | <i>Acc</i> | MWwt | <i>Acc</i> | Wwt | <i>Acc</i> | Pwt | <i>Acc</i> |
| 0.2* | 64% | 0.0 | 44% | 4.1 | 70% | 7.4 | 70% |
| Pfat | <i>Acc</i> | Pemd | <i>Acc</i> | NLW | <i>Acc</i> | BLX | <i>Acc</i> |
| 0.4 | 68% | 1.7* | 67% | 10 | 36% | 128.3 | 42% |

Purchaser _____ \$ _____

HALCROFT & BENNETT

LIVESTOCK - REAL ESTATE - PROPERTY SALES

COONAMBLE GULARGAMBONE & WARREN DISTRICT

LICENSED STOCK & STATION, REAL ESTATE AGENT

**For all your livestock, property
and real estate needs.**

77 Castlereagh Street, PO Box 44
COONAMBLE NSW 2829

Phone: 02 6822 1444 Fax: 02 6822 2388

Email: office@halcroftandbennett.net.au
Website: www.halcroftandbennett.com.au

David Thompson

0428 214 465

livestock@halcroftandbennett.net.au

Steven Colwell

0428 480 117

gular@halcroftandbennett.net.au

Ulrich Eins

0428 916 066

ulrich@halcroftandbennett.net.au

Mary Skuthorp

0408 262 075

realestate@halcroftandbennett.net.au



Gilgandra High School show team at Coonamble taking out the major awards against strong local studs.



***Dubbo Show 1st place Shorn Ram Lamb.
To be offered at Dubbo Show and Ram Sale
on 2nd October 2019.***



*2nd cross lambs topping the Dubbo sale,
27th May 2019. Bred from New Armatree
1st cross ewes.*



*2019 Dubbo Show Champion Shorn Group,
shown by Gilgandra High School show team.*

| Lot 34 | | Tag No. 88 | | Twin | | Sire NA 16-0324 | |
|--------|-----|------------|-----|------|-----|-----------------|-----|
| Bwt | Acc | MWwt | Acc | Wwt | Acc | Pwt | Acc |
| 0.3 | 62% | 0.3 | 44% | 4.8 | 69% | 7.7 | 69% |
| Pfat | Acc | Pemd | Acc | NLW | Acc | BLX | Acc |
| -0.4 | 69% | -0.4 | 67% | 8 | 36% | 121.0 | 42% |

Purchaser _____ \$ _____

| Lot 35 | | Tag No. 158 | | Twin | | Sire NA 16-0146 | |
|--------|-----|-------------|-----|------|-----|-----------------|-----|
| Bwt | Acc | MWwt | Acc | Wwt | Acc | Pwt | Acc |
| 0.3 | 67% | 0.9 | 44% | 4.7 | 73% | 6.9 | 73% |
| Pfat | Acc | Pemd | Acc | NLW | Acc | BLX | Acc |
| -0.9 | 73% | 0.7 | 71% | 4 | 37% | 121.3 | 44% |

Purchaser _____ \$ _____

| Lot 36 | | Tag No. 377 | | Twin | | Sire GL 16-0329 | |
|--------|-----|-------------|-----|------|-----|-----------------|-----|
| Bwt | Acc | MWwt | Acc | Wwt | Acc | Pwt | Acc |
| 0.1* | 62% | 0.5 | 44% | 3.3 | 69% | 6.5 | 68% |
| Pfat | Acc | Pemd | Acc | NLW | Acc | BLX | Acc |
| 0.7* | 69% | 1.0* | 65% | 5 | 38% | 119.6 | 43% |

Purchaser _____ \$ _____

| Lot 37 | | Tag No. 364 | | Twin | | Sire NA 16-0083 | |
|--------|-----|-------------|-----|------|-----|-----------------|-----|
| Bwt | Acc | MWwt | Acc | Wwt | Acc | Pwt | Acc |
| 0.3 | 62% | 0.0 | 46% | 2.7 | 69% | 4.0 | 70% |
| Pfat | Acc | Pemd | Acc | NLW | Acc | BLX | Acc |
| 1.3* | 69% | 0.6 | 67% | 13 | 37% | 120.2 | 45% |

Purchaser _____ \$ _____

| Lot 38 | | Tag No. 66 | | Twin | | Sire NA 16-0083 | |
|--------|-----|------------|-----|------|-----|-----------------|-----|
| Bwt | Acc | MWwt | Acc | Wwt | Acc | Pwt | Acc |
| 0.2* | 62% | 0.6 | 43% | 2.8 | 70% | 5.3 | 70% |
| Pfat | Acc | Pemd | Acc | NLW | Acc | BLX | Acc |
| 1.3* | 72% | 0.7 | 69% | 7 | 35% | 117.9 | 42% |

Purchaser _____ \$ _____

| Lot 39 | | Tag No. 270 | | Twin | | Sire NA 16-0146 | |
|--------|-----|-------------|-----|------|-----|-----------------|-----|
| Bwt | Acc | MWwt | Acc | Wwt | Acc | Pwt | Acc |
| 0.3 | 66% | 0.1 | 42% | 4.8 | 72% | 7.0 | 72% |
| Pfat | Acc | Pemd | Acc | NLW | Acc | BLX | Acc |
| -1.1 | 72% | 0.5 | 70% | 6 | 37% | 118.8 | 43% |

Purchaser _____ \$ _____

| Lot 40 | | Tag No. 321 | | Twin | | Sire NA 16-0324 | |
|--------|-----|-------------|-----|------|-----|-----------------|-----|
| Bwt | Acc | MWwt | Acc | Wwt | Acc | Pwt | Acc |
| 0.3 | 60% | 1.0 | 42% | 6.0 | 64% | 9.2 | 65% |
| Pfat | Acc | Pemd | Acc | NLW | Acc | BLX | Acc |
| -0.8 | 68% | -0.1 | 65% | 5 | 35% | 118.9 | 40% |

Purchaser _____ \$ _____

| Lot 41 | | Tag No. 269 | | Twin | | Sire NA 16-0146 | |
|--------|-----|-------------|-----|------|-----|-----------------|-----|
| Bwt | Acc | MWwt | Acc | Wwt | Acc | Pwt | Acc |
| 0.2* | 63% | 0.8 | 40% | 3.9 | 69% | 6.3 | 70% |
| Pfat | Acc | Pemd | Acc | NLW | Acc | BLX | Acc |
| -0.9 | 69% | 0.8* | 67% | 8 | 34% | 121.7 | 40% |

Purchaser _____ \$ _____

| Lot 42 | | Tag No. 57 | | Twin | | Sire NA 16-0083 | |
|--------|-----|------------|-----|------|-----|-----------------|-----|
| Bwt | Acc | MWwt | Acc | Wwt | Acc | Pwt | Acc |
| 0.2* | 63% | 0.3 | 49% | 2.0 | 70% | 3.9 | 70% |
| Pfat | Acc | Pemd | Acc | NLW | Acc | BLX | Acc |
| 1.2* | 70% | 1.5* | 67% | 8 | 36% | 118.5 | 44% |

Purchaser _____ \$ _____

| Lot 43 | | Tag No. 167 | | Twin | | Sire NA 17-0287 | |
|--------|-----|-------------|-----|------|-----|-----------------|-----|
| Bwt | . | MWwt | Acc | Wwt | Acc | Pwt | Acc |
| 0.2* | 62% | 0.5 | 41% | 4.1 | 69% | 5.9 | 69% |
| Pfat | Acc | Pemd | Acc | NLW | Acc | BLX | Acc |
| 0.7* | 68% | 1.3* | 68% | 12 | 35% | 125.3 | 41% |

Purchaser _____ \$ _____



Agricultural Contracting

Yard building, repairs and
modifications, all types of rural fencing.

Lamb marking/mulesing service.

We also offer spraying and grain
freight in season.

Justin & Sara Worner

'Havilah' Curban NSW 2827

0428 223 037

jswagcontracting@gmail.com

| Lot 44 | | Tag No. 378 | | Twin | | Sire NA 15-0070 | |
|-------------|------------|-------------|------------|------------|------------|-----------------|------------|
| Bwt | <i>Acc</i> | MWwt | <i>Acc</i> | Wwt | <i>Acc</i> | Pwt | <i>Acc</i> |
| 0.4 | 63% | -0.8 | 43% | 5.0 | 70% | 7.8 | 70% |
| Pfat | <i>Acc</i> | Pemd | <i>Acc</i> | NLW | <i>Acc</i> | BLX | <i>Acc</i> |
| -0.3 | 70% | 0.6 | 67% | 13 | 36% | 124.3 | 41% |

Purchaser _____ \$ _____

| Lot 45 | | Tag No. 244 | | Twin | | Sire NA 16-0146 | |
|-------------|------------|-------------|------------|------------|------------|-----------------|------------|
| Bwt | <i>Acc</i> | MWwt | <i>Acc</i> | Wwt | <i>Acc</i> | Pwt | <i>Acc</i> |
| 0.4 | 64% | 0.5 | 43% | 5.8 | 71% | 8.5 | 71% |
| Pfat | <i>Acc</i> | Pemd | <i>Acc</i> | NLW | <i>Acc</i> | BLX | <i>Acc</i> |
| -0.5 | 71% | 0.8* | 68% | 10 | 37% | 125.6 | 43% |

Purchaser _____ \$ _____

| Lot 46 | | Tag No. 194 | | Twin | | Sire GL 16-0329 | |
|-------------|------------|-------------|------------|------------|------------|-----------------|------------|
| Bwt | <i>Acc</i> | MWwt | <i>Acc</i> | Wwt | <i>Acc</i> | Pwt | <i>Acc</i> |
| 0.1* | 62% | 1.3* | 47% | 3.6 | 69% | 6.1 | 69% |
| Pfat | <i>Acc</i> | Pemd | <i>Acc</i> | NLW | <i>Acc</i> | BLX | <i>Acc</i> |
| -0.2 | 68% | 1.1* | 67% | 6 | 37% | 121.3 | 42% |

Purchaser _____ \$ _____



Lot 47 (Tag 105) and Lot 48 (Tag 103), triplet brothers

| Lot 47 | | Tag No. 105 | | Twin | | Sire NA 16-0083 | |
|--------|-----|-------------|-----|------|-----|-----------------|-----|
| Bwt | Acc | MWwt | Acc | Wwt | Acc | Pwt | Acc |
| 0.4 | 61% | 0.6 | 44% | 5.5 | 68% | 8.7 | 68% |
| Pfat | Acc | Pemd | Acc | NLW | Acc | BLX | Acc |
| 0.7* | 68% | 1.4* | 65% | 11 | 35% | 129.3* | 41% |

Purchaser _____ \$ _____

| Lot 48 | | Tag No. 103 | | Twin | | Sire NA 16-0083 | |
|--------|-----|-------------|-----|------|-----|-----------------|-----|
| Bwt | Acc | MWwt | Acc | Wwt | Acc | Pwt | Acc |
| 0.3 | 61% | 0.6 | 44% | 4.8 | 68% | 8.0 | 68% |
| Pfat | Acc | Pemd | Acc | NLW | Acc | BLX | Acc |
| 1.4* | 68% | 1.4* | 65% | 9 | 35% | 125.2 | 41% |

Purchaser _____ \$ _____

| Lot 49 | | Tag No. 366 | | Twin | | Sire NA 15-0070 | |
|--------|-----|-------------|-----|------|-----|-----------------|-----|
| Bwt | Acc | MWwt | Acc | Wwt | Acc | Pwt | Acc |
| 0.3 | 64% | -0.3 | 47% | 2.1 | 71% | 3.5 | 71% |
| Pfat | Acc | Pemd | Acc | NLW | Acc | BLX | Acc |
| -0.3 | 70% | 1.0* | 68% | 10 | 39% | 117.6 | 44% |

Purchaser _____ \$ _____

| Lot 50 | | Tag No. 325 | | Twin | | Sire NA 15-0026 | |
|--------|-----|-------------|-----|------|-----|-----------------|-----|
| Bwt | Acc | MWwt | Acc | Wwt | Acc | Pwt | Acc |
| 0.3 | 64% | -0.3 | 46% | 4.4 | 70% | 8.2 | 70% |
| Pfat | Acc | Pemd | Acc | NLW | Acc | BLX | Acc |
| 0.8* | 70% | -0.3 | 68% | 12 | 39% | 118.5 | 44% |

Purchaser _____ \$ _____

Double C Pastoral Scanning Service

*Ultra-sound
Sheep and Cattle
Pregnancy Testing*

Contact Craig Chad

Phone: 6886 5256

Mobile: 0427 865 178





Lot 51 - Tag 82

| Lot 51 | | Tag No. 82 | | Twin | | Sire NA 16-0324 | |
|-------------|------------|-------------|------------|------------|------------|-----------------|------------|
| Bwt | <i>Acc</i> | MWwt | <i>Acc</i> | Wwt | <i>Acc</i> | Pwt | <i>Acc</i> |
| 0.2* | 61% | 0.9 | 44% | 3.8 | 68% | 6.5 | 69% |
| Pfat | <i>Acc</i> | Pemd | <i>Acc</i> | NLW | <i>Acc</i> | BLX | <i>Acc</i> |
| 0.2 | 69% | 0.2 | 65% | 7 | 36% | 120.4 | 42% |

Purchaser _____ \$ _____

| Lot 52 | | Tag No. 104 | | Twin | | Sire NA 16-0083 | |
|-------------|------------|-------------|------------|------------|------------|-----------------|------------|
| Bwt | <i>Acc</i> | MWwt | <i>Acc</i> | Wwt | <i>Acc</i> | Pwt | <i>Acc</i> |
| 0.4 | 61% | 0.6 | 44% | 5.0 | 68% | 7.9 | 68% |
| Pfat | <i>Acc</i> | Pemd | <i>Acc</i> | NLW | <i>Acc</i> | BLX | <i>Acc</i> |
| 1.1* | 68% | 1.3* | 65% | 9 | 35% | 124.9 | 41% |

Purchaser _____ \$ _____

| Lot 53 | | Tag No. 319 | | Twin | | Sire NA 16-0324 | |
|-------------|------------|-------------|------------|------------|------------|-----------------|------------|
| Bwt | <i>Acc</i> | MWwt | <i>Acc</i> | Wwt | <i>Acc</i> | Pwt | <i>Acc</i> |
| 0.3 | 60% | 0.9 | 42% | 4.9 | 68% | 7.4 | 68% |
| Pfat | <i>Acc</i> | Pemd | <i>Acc</i> | NLW | <i>Acc</i> | BLX | <i>Acc</i> |
| -0.7 | 68% | 0.2 | 65% | 6 | 35% | 118.8 | 41% |

Purchaser _____ \$ _____

| Lot 54 | | Tag No. 65 | | Twin | | Sire NA 16-0083 | |
|--------|-----|------------|-----|------|-----|-----------------|-----|
| Bwt | Acc | MWwt | Acc | Wwt | Acc | Pwt | Acc |
| 0.2* | 62% | 0.6 | 45% | 3.0 | 69% | 5.7 | 70% |
| Pfat | Acc | Pemd | Acc | NLW | Acc | BLX | Acc |
| 1.4* | 70% | 0.7 | 67% | 7 | 37% | 119.2 | 43% |

Purchaser _____ \$ _____

| Lot 55 | | Tag No. 247 | | Twin | | Sire NA 15-0070 | |
|--------|-----|-------------|-----|------|-----|-----------------|-----|
| Bwt | Acc | MWwt | Acc | Wwt | Acc | Pwt | Acc |
| 0.5 | 63% | 0.5 | 41% | 3.8 | 70% | 6.4 | 70% |
| Pfat | Acc | Pemd | Acc | NLW | Acc | BLX | Acc |
| 0.0 | 69% | 0.4 | 67% | 12 | 36% | 120.8 | 41% |

Purchaser _____ \$ _____

| Lot 56 | | Tag No. 352 | | Twin | | Sire NA 15-0026 | |
|--------|-----|-------------|-----|------|-----|-----------------|-----|
| Bwt | Acc | MWwt | Acc | Wwt | Acc | Pwt | Acc |
| 0.2* | 64% | -0.8 | 47% | 5.8 | 70% | 8.8 | 71% |
| Pfat | Acc | Pemd | Acc | NLW | Acc | BLX | Acc |
| 0.4 | 70% | 0.5 | 68% | 6 | 39% | 117.6 | 44% |

Purchaser _____ \$ _____

| Lot 57 | | Tag No. 267 | | Twin | | Sire GL 16-0329 | |
|--------|-----|-------------|-----|------|-----|-----------------|-----|
| Bwt | Acc | MWwt | Acc | Wwt | Acc | Pwt | Acc |
| 0.2* | 61% | 0.9 | 47% | 4.0 | 63% | 6.5 | 63% |
| Pfat | Acc | Pemd | Acc | NLW | Acc | BLX | Acc |
| 0.4* | 68% | 0.9* | 65% | 9 | 38% | 122.0 | 42% |

Purchaser _____ \$ _____

| Lot 58 | | Tag No. 185 | | Twin | | Sire GL 16-0329 | |
|--------|-----|-------------|-----|------|-----|-----------------|-----|
| Bwt | Acc | MWwt | Acc | Wwt | Acc | Pwt | Acc |
| 0.1* | 62% | 0.6 | 46% | 3.6 | 69% | 6.3 | 69% |
| Pfat | Acc | Pemd | Acc | NLW | Acc | BLX | Acc |
| 0.3 | 68% | 0.5 | 67% | 8 | 39% | 119.9 | 43% |

Purchaser _____ \$ _____



Lot 59 - Tag 94

| Lot 59 | | Tag No. 94 | | Twin | | Sire NA 16-0093 | |
|-------------|------------|-------------|------------|-------------|------------|-----------------|------------|
| Bwt | <i>Acc</i> | MWwt | <i>Acc</i> | Wwt | <i>Acc</i> | Pwt | <i>Acc</i> |
| 0.3 | 62% | -0.4 | 40% | 6.8* | 69% | 9.6* | 69% |
| Pfat | <i>Acc</i> | Pemd | <i>Acc</i> | NLW | <i>Acc</i> | BLX | <i>Acc</i> |
| 0.9* | 69% | 0.9* | 67% | 6 | 35% | 123.0 | 41% |

Purchaser _____ \$ _____

| Lot 60 | | Tag No. 318 | | Twin | | Sire GL 16-0329 | |
|-------------|------------|-------------|------------|------------|------------|-----------------|------------|
| Bwt | <i>Acc</i> | MWwt | <i>Acc</i> | Wwt | <i>Acc</i> | Pwt | <i>Acc</i> |
| 0.2* | 61% | 0.5 | 41% | 4.6 | 68% | 7.3 | 68% |
| Pfat | <i>Acc</i> | Pemd | <i>Acc</i> | NLW | <i>Acc</i> | BLX | <i>Acc</i> |
| -0.5 | 68% | 0.9* | 65% | 3 | 35% | 118.2 | 40% |

Purchaser _____ \$ _____

| Lot 61 | | Tag No. 239 | | Twin | | Sire NA 16-0146 | |
|-------------|------------|-------------|------------|------------|------------|-----------------|------------|
| Bwt | <i>Acc</i> | MWwt | <i>Acc</i> | Wwt | <i>Acc</i> | Pwt | <i>Acc</i> |
| 0.3 | 63% | -0.6 | 40% | 4.7 | 69% | 7.9 | 68% |
| Pfat | <i>Acc</i> | Pemd | <i>Acc</i> | NLW | <i>Acc</i> | BLX | <i>Acc</i> |
| 0.7* | 69% | 1.3* | 67% | 3 | 34% | 118.4 | 40% |

Purchaser _____ \$ _____

| Lot 62 | | Tag No. 25 | | Twin | | Sire GL 16-0329 | |
|-------------|------------|-------------|------------|-------------|------------|-----------------|------------|
| Bwt | <i>Acc</i> | MWwt | <i>Acc</i> | Wwt | <i>Acc</i> | Pwt | <i>Acc</i> |
| 0.3 | 62% | 1.1 | 45% | 6.1* | 69% | 9.3 | 69% |
| Pfat | <i>Acc</i> | Pemd | <i>Acc</i> | NLW | <i>Acc</i> | BLX | <i>Acc</i> |
| -0.5 | 69% | 1.6* | 66% | 11 | 37% | 134.6* | 42% |

Purchaser _____ \$ _____

| Lot 63 | | Tag No. 41 | | Twin | | Sire NA 16-0146 | |
|-------------|------------|-------------|------------|------------|------------|-----------------|------------|
| Bwt | <i>Acc</i> | MWwt | <i>Acc</i> | Wwt | <i>Acc</i> | Pwt | <i>Acc</i> |
| 0.2* | 64% | 1.5* | 46% | 4.2 | 71% | 6.0 | 71% |
| Pfat | <i>Acc</i> | Pemd | <i>Acc</i> | NLW | <i>Acc</i> | BLX | <i>Acc</i> |
| -1.1 | 71% | 0.2 | 69% | 5 | 38% | 118.3 | 44% |

Purchaser _____ \$ _____



Lot 64 - Tag 38

| Lot 64 | | Tag No. 38 | | Twin | | Sire GL 16-0329 | |
|-------------|------------|-------------|------------|------------|------------|-----------------|------------|
| Bwt | <i>Acc</i> | MWwt | <i>Acc</i> | Wwt | <i>Acc</i> | Pwt | <i>Acc</i> |
| 0.1* | 62% | 0.7 | 43% | 3.8 | 69% | 6.0 | 69% |
| Pfat | <i>Acc</i> | Pemd | <i>Acc</i> | NLW | <i>Acc</i> | BLX | <i>Acc</i> |
| -0.1 | 68% | 1.3* | 67% | 8 | 36% | 124.8 | 43% |

Purchaser _____ \$ _____

| Lot 65 | | Tag No. 119 | | Twin | | Sire NA 16-0324 | |
|-------------|------------|-------------|------------|------------|------------|-----------------|------------|
| Bwt | <i>Acc</i> | MWwt | <i>Acc</i> | Wwt | <i>Acc</i> | Pwt | <i>Acc</i> |
| 0.2* | 60% | 1.2* | 40% | 6.0 | 68% | 8.3 | 68% |
| Pfat | <i>Acc</i> | Pemd | <i>Acc</i> | NLW | <i>Acc</i> | BLX | <i>Acc</i> |
| 0.7* | 68% | 0.6 | 65% | 9 | 35% | 127.8 | 40% |

Purchaser _____ \$ _____

| Lot 66 | | Tag No. 44 | | Twin | | Sire NA 16-0146 | |
|-------------|------------|-------------|------------|------------|------------|-----------------|------------|
| Bwt | <i>Acc</i> | MWwt | <i>Acc</i> | Wwt | <i>Acc</i> | Pwt | <i>Acc</i> |
| 0.1* | 63% | 0.6 | 40% | 3.6 | 69% | 5.9 | 70% |
| Pfat | <i>Acc</i> | Pemd | <i>Acc</i> | NLW | <i>Acc</i> | BLX | <i>Acc</i> |
| -0.3 | 70% | 0.9* | 67% | 11 | 34% | 124.0 | 40% |

Purchaser _____ \$ _____

| Lot 67 | | Tag No. 120 | | Twin | | Sire NA 16-0324 | |
|-------------|------------|-------------|------------|------------|------------|-----------------|------------|
| Bwt | <i>Acc</i> | MWwt | <i>Acc</i> | Wwt | <i>Acc</i> | Pwt | <i>Acc</i> |
| 0.3 | 60% | 0.9 | 40% | 5.8 | 68% | 8.5 | 68% |
| Pfat | <i>Acc</i> | Pemd | <i>Acc</i> | NLW | <i>Acc</i> | BLX | <i>Acc</i> |
| 0.6* | 68% | 0.6 | 65% | 11 | 35% | 128.7* | 40% |

Purchaser _____ \$ _____

| Lot 68 | | Tag No. 211 | | Twin | | Sire NA 17-0287 | |
|-------------|------------|-------------|------------|------------|------------|-----------------|------------|
| Bwt | <i>Acc</i> | MWwt | <i>Acc</i> | Wwt | <i>Acc</i> | Pwt | <i>Acc</i> |
| 0.3 | 62% | 0.1 | 44% | 4.2 | 69% | 7.2 | 69% |
| Pfat | <i>Acc</i> | Pemd | <i>Acc</i> | NLW | <i>Acc</i> | BLX | <i>Acc</i> |
| 0.3 | 68% | 1.3* | 66% | 10 | 35% | 124.9 | 41% |

Purchaser _____ \$ _____

| Lot 69 | | Tag No. 305 | | Twin | | Sire NA 16-0083 | |
|-------------|------------|-------------|------------|------------|------------|-----------------|------------|
| Bwt | <i>Acc</i> | MWwt | <i>Acc</i> | Wwt | <i>Acc</i> | Pwt | <i>Acc</i> |
| 0.4 | 61% | 0.5 | 44% | 4.0 | 68% | 7.0 | 69% |
| Pfat | <i>Acc</i> | Pemd | <i>Acc</i> | NLW | <i>Acc</i> | BLX | <i>Acc</i> |
| 3.6* | 69% | 1.8* | 66% | 10 | 36% | 129.5* | 42% |

Purchaser _____ \$ _____

| Lot 70 | | Tag No. 294 | | Twin | | Sire NA 16-0146 | |
|-------------|------------|-------------|------------|------------|------------|-----------------|------------|
| Bwt | <i>Acc</i> | MWwt | <i>Acc</i> | Wwt | <i>Acc</i> | Pwt | <i>Acc</i> |
| 0.2* | 66% | 1.2* | 44% | 4.5 | 72% | 6.6 | 72% |
| Pfat | <i>Acc</i> | Pemd | <i>Acc</i> | NLW | <i>Acc</i> | BLX | <i>Acc</i> |
| -0.7 | 72% | 1.3* | 70% | 5 | 38% | 122.5 | 44% |

Purchaser _____ \$ _____

| Lot 71 | | Tag No. 212 | | Twin | | Sire NA 16-0093 | |
|-------------|------------|-------------|------------|------------|------------|-----------------|------------|
| Bwt | <i>Acc</i> | MWwt | <i>Acc</i> | Wwt | <i>Acc</i> | Pwt | <i>Acc</i> |
| 0.1* | 63% | -0.1 | 41% | 4.8 | 70% | 8.1 | 70% |
| Pfat | <i>Acc</i> | Pemd | <i>Acc</i> | NLW | <i>Acc</i> | BLX | <i>Acc</i> |
| 1.4* | 70% | 1.6* | 67% | 16* | 36% | 130.0* | 42% |

Purchaser _____ \$ _____

| Lot 72 | | Tag No. 53 | | Twin | | Sire NA 16-0093 | |
|-------------|------------|-------------|------------|------------|------------|-----------------|------------|
| Bwt | <i>Acc</i> | MWwt | <i>Acc</i> | Wwt | <i>Acc</i> | Pwt | <i>Acc</i> |
| 0.2* | 63% | 0.2 | 41% | 4.8 | 69% | 7.6 | 70% |
| Pfat | <i>Acc</i> | Pemd | <i>Acc</i> | NLW | <i>Acc</i> | BLX | <i>Acc</i> |
| 0.7* | 70% | 2.2* | 67% | 12 | 35% | 133.5* | 41% |

Purchaser _____ \$ _____





***Dr Nadine Allan, Gilgandra Veterinary Clinic,
vet checking the rams.***



***Gilgandra High School student, Sam Duff, enjoying
2019 Wellington Show as part of the school's show team.***

Bringing wool growers, processors and consumers together



Call your local AWN Wool or Livestock
Specialist or Private Buyer today.

Wool Specialist

NSW Central & Western: Brett Cooper 0407 136 129

• David Mahiraj 0438 639 238 • Carl Carlton 0429 892 877

• Greg Woodlock 0408 798 668

Livestock Specialist

Peter Hargreaves 0409 321 001

Private Buyer

Richard Butcher 0427 254 643



**Australian
WoolNetwork**



woolnetwork.com.au



GILGANDRA
VETERINARY
CLINIC

*Pet and Livestock
health care advice*

Nadine Allan BVSc

6847 1129

0427 471 129

2 Enterprise Drive, Gilgandra

info@gilvets.com.au



SuperBorder\$® is the brand name for Border Leicester rams that are of high genetic merit in maternal traits such as fertility, milk yield, weaning weight and growth rate.

SuperBorder\$ rams are easily identified by their official yellow SuperBorder\$ button ear tags.

SuperBorder\$ Inc. is made up of 15 Border Leicester studs from four states who have realised that selling rams on visual appearance alone may favour early born, well fed single animals, but by using genetic evaluation provided by Lambplan, late born multiples are able to have their genetic potential revealed.

Rams that are marketed as SuperBorder\$ are rams that are above average for the breed, based on the BLX Index figure on the 15th August Lambplan run each year. Not all rams sold by SuperBorder\$ members are necessarily SuperBorder\$, but you can be assured, they are bred by committed, registered breeders striving for strong genetic gain. SuperBorder\$ rams must be structurally correct and of good breed type.

SuperBorder breeders are required to maintain links through the use of common sires. This is usually achieved through AI programs and participation in Sheep CRC research flocks. By having progeny by common sires run in different environments and under different management regimes, Lambplan is able to isolate the genetic factors from the environmental ones and calculate accurate and meaningful ASBV's (Australian Sheep Breeding Values).

First Cross lambs sired by 100% SuperBorder\$ rams may be sold as "Bred from SuperBorder\$". Special yellow pen cards and SuperBorder\$ ear tags are available to identify these animals. Talk to us for more information on these products.



Notes



Printed by Gilgandra Newspapers Pty Ltd - 02 6847 2022

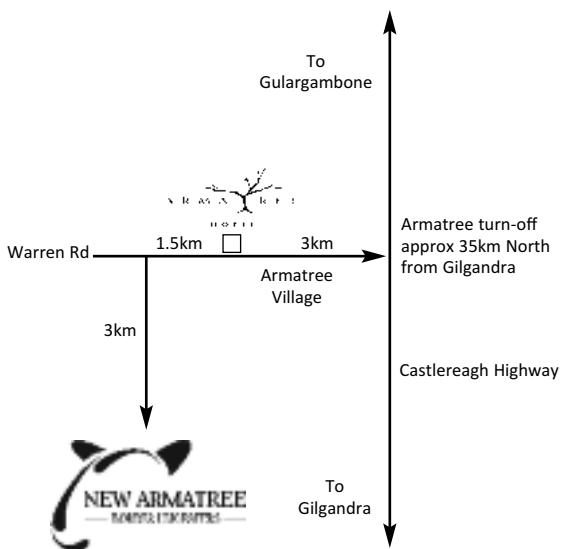
Percentile Report

Analysis Mat-1st X Sire Breed Cntd 15-Aug-19

Animals born in 2018

| Band | B ₁ h2 | B ₂ h2 | W ₁ h2 | W ₂ h2 | M ₁ h2 | M ₂ h2 | Power mW | Plat mm | Band mm | Yat g3 | Yat mm | Yand mm | Yg ₁ % | Yid u | Place % | MLW % | YNLW % | PBG cm | Awe h2 | BLX |
|------|----------------------|----------------------|----------------------|----------------------|----------------------|----------------------|-------------|------------|------------|-----------|-----------|------------|----------------------|----------|------------|----------|-----------|-----------|-----------|-------|
| 0 | -0.3 | 11.2 | 3.0 | 19.5 | 3.8 | 2.7 | 20.7 | 4.2 | 2.2 | 2.2 | 2.2 | 2.2 | 24 | -1.0 | -82 | 28 | 32 | 8.2 | 26.2 | 188.1 |
| 1 | -0.1 | 8.9 | 2.1 | 14.2 | 1.4 | 1.6 | 15.4 | 1.9 | 1.5 | 1.5 | 1.5 | 1.5 | 16 | -0.9 | -59 | 22 | 24 | 5.2 | 17.6 | 147.6 |
| 2 | 0.0 | 8.4 | 1.8 | 13.4 | 1.2 | 1.7 | 14.6 | 1.6 | 1.4 | 1.6 | 1.4 | 1.4 | 15 | -0.7 | -53 | 21 | 22 | 4.6 | 16.6 | 144.6 |
| 3 | 0.0 | 8.1 | 1.6 | 12.9 | 1.0 | 1.6 | 14.0 | 1.4 | 1.3 | 1.4 | 1.3 | 1.3 | 14 | -0.7 | -47 | 20 | 21 | 4.6 | 16.1 | 142.6 |
| 4 | 0.0 | 7.8 | 1.7 | 12.4 | 0.9 | 1.5 | 13.5 | 1.2 | 1.2 | 1.3 | 1.2 | 1.2 | 13 | -0.6 | -43 | 20 | 20 | 4.5 | 15.6 | 141.0 |
| 5 | 0.1 | 7.8 | 1.7 | 12.1 | 0.8 | 1.4 | 13.2 | 1.1 | 1.2 | 1.3 | 1.2 | 1.2 | 13 | -0.5 | -40 | 19 | 19 | 4.3 | 15.2 | 139.7 |
| 10 | 0.1 | 6.9 | 1.5 | 10.9 | 0.6 | 1.2 | 12.1 | 0.9 | 1.0 | 1.1 | 1.0 | 1.0 | 11 | -0.4 | -33 | 17 | 16 | 3.5 | 13.8 | 134.5 |
| 15 | 0.1 | 6.4 | 1.3 | 10.0 | 0.4 | 1.0 | 11.3 | 0.6 | 0.8 | 0.8 | 0.8 | 0.8 | 10 | -0.3 | -28 | 16 | 14 | 3.5 | 12.0 | 131.2 |
| 20 | 0.2 | 6.1 | 1.2 | 9.4 | 0.3 | 0.8 | 10.7 | 0.4 | 0.7 | 0.7 | 0.7 | 0.7 | 9 | -0.1 | -26 | 15 | 13 | 3.2 | 12.4 | 128.6 |
| 25 | 0.2 | 5.9 | 1.1 | 8.9 | 0.2 | 0.7 | 10.3 | 0.2 | 0.6 | 0.6 | 0.6 | 0.6 | 8 | 0.1 | -23 | 14 | 12 | 2.9 | 11.9 | 126.4 |
| 30 | 0.2 | 5.6 | 1.0 | 8.5 | 0.1 | 0.6 | 9.9 | 0.1 | 0.5 | 0.5 | 0.5 | 0.5 | 8 | 0.2 | -20 | 13 | 11 | 2.7 | 11.4 | 124.6 |
| 35 | 0.2 | 5.3 | 0.9 | 8.1 | 0.0 | 0.5 | 9.5 | 0.0 | 0.4 | 0.4 | 0.4 | 0.4 | 7 | 0.3 | -17 | 12 | 10 | 2.5 | 11.0 | 122.8 |
| 40 | 0.2 | 5.1 | 0.8 | 7.6 | -0.1 | 0.4 | 9.2 | -0.1 | 0.3 | 0.3 | 0.3 | 0.3 | 7 | 0.4 | -14 | 11 | 10 | 2.5 | 10.6 | 121.1 |
| 45 | 0.3 | 4.8 | 0.8 | 7.5 | -0.2 | 0.3 | 8.8 | -0.2 | 0.2 | 0.2 | 0.2 | 0.2 | 6 | 0.5 | -12 | 10 | 9 | 2.3 | 10.2 | 119.3 |
| 50 | 0.3 | 4.7 | 0.7 | 7.2 | -0.2 | 0.2 | 8.6 | -0.3 | 0.1 | 0.1 | 0.1 | 0.1 | 6 | 0.6 | -10 | 10 | 9 | 2.2 | 9.9 | 117.3 |
| 55 | 0.3 | 4.5 | 0.6 | 6.9 | -0.3 | 0.1 | 8.1 | -0.5 | 0.1 | 0.1 | 0.0 | 0.0 | 5 | 0.7 | -8 | 9 | 8 | 2.1 | 8.9 | 116.2 |
| 60 | 0.3 | 4.3 | 0.6 | 6.5 | -0.4 | 0.0 | 7.8 | -0.6 | 0.0 | 0.0 | 0.0 | 0.0 | 5 | 0.8 | -7 | 9 | 8 | 2.0 | 8.1 | 113.3 |
| 65 | 0.3 | 4.1 | 0.4 | 6.2 | -0.5 | 0.0 | 7.4 | -0.7 | -0.1 | 0.0 | 0.0 | 0.0 | 4 | 0.9 | -4 | 8 | 7 | 1.9 | 8.7 | 111.6 |
| 70 | 0.3 | 3.9 | 0.4 | 5.6 | -0.5 | -0.1 | 7.0 | -0.8 | -0.2 | 0.0 | 0.0 | 0.0 | 3 | 1.0 | 2 | 7 | 7 | 1.8 | 8.2 | 110.1 |
| 75 | 0.4 | 3.6 | 0.3 | 5.4 | -0.6 | -0.2 | 6.6 | -0.9 | -0.3 | 0.0 | 0.0 | 0.0 | 2 | 1.1 | 6 | 6 | 6 | 1.7 | 7.7 | 108.6 |
| 80 | 0.4 | 3.4 | 0.2 | 4.9 | -0.7 | -0.3 | 6.0 | -1.0 | -0.3 | 0.0 | 0.0 | 0.0 | 2 | 1.3 | 10 | 6 | 6 | 1.5 | 7.3 | 107.2 |
| 85 | 0.4 | 3.1 | 0.0 | 4.4 | -0.8 | -0.4 | 5.4 | -1.2 | -0.4 | 0.0 | 0.0 | 0.0 | 1 | 1.3 | 15 | 5 | 5 | 1.3 | 6.8 | 105.7 |
| 90 | 0.5 | 2.9 | -0.1 | 3.6 | -0.9 | -0.5 | 4.8 | -1.4 | -0.6 | 0.0 | 0.0 | 0.0 | 0 | 1.4 | 32 | 4 | 4 | 1.1 | 6.0 | 103.8 |
| 95 | 0.5 | 2.3 | -0.4 | 3.1 | -1.1 | -0.6 | 4.0 | -1.7 | -0.7 | -0.1 | 0.0 | 0.0 | -1 | 1.6 | 32 | 2 | 3 | 0.6 | 5.1 | 101.5 |
| 96 | 0.5 | 2.1 | -0.5 | 2.9 | -1.1 | -0.6 | 3.6 | -1.7 | -0.8 | -0.2 | 0.0 | 0.0 | -2 | 1.6 | 34 | 2 | 2 | 0.7 | 4.9 | 100.9 |
| 97 | 0.5 | 2.0 | -0.6 | 2.7 | -1.2 | -0.9 | 3.5 | -1.9 | -0.9 | -0.3 | 0.0 | 0.0 | -3 | 2.3 | 37 | 1 | 1 | 0.6 | 4.5 | 100.2 |
| 98 | 0.6 | 1.7 | -0.8 | 2.4 | -1.3 | -1.0 | 3.2 | -2.0 | -1.0 | -0.4 | 0.0 | 0.0 | -4 | 3.3 | 42 | 0 | 1 | 0.1 | 3.5 | 99.1 |
| 99 | 0.6 | 1.3 | -1.0 | 1.9 | -1.4 | -1.2 | 2.6 | -2.2 | -1.1 | -0.4 | 0.0 | 0.0 | -4 | 3.3 | 46 | -1 | 1 | 0.1 | 3.5 | 97.3 |
| 100 | 0.6 | -1.0 | -0.2 | -1.0 | -2.6 | -2.0 | -1.5 | -4.2 | -1.1 | -1.5 | -4.2 | -1.1 | -15 | 3.7 | 77 | -6 | -3 | -1.7 | -1.0 | 89.1 |

'New Armatree' directions



Craig & Jenny

Max

Peta & Jack

Thank you for supporting our sale.

