



13th on Property Ram Sale

Thursday 9th September 2021
110 Flock Rams



www.newarmatree.com.au



NEW ARMATREE 13th ON PROPERTY FLOCK RAM SALE

Thursday 9th September

**Offering 110
Performance tested
Vet Checked Rams
Flock Number 4786**

**Inspection from 11am
Complimentary lunch 12noon
Auction 1pm**

Auction will be fully interfaced with AuctionsPlus



Australia's Livestock Marketplace

**Selling Agents:
Steve Colwell, Halcroft & Bennett
Scott Thrift, Elders**

**a/c Craig & Jenny Bradley
0428 422 234 | 0428 256 593**

**Breeding Advisor:
Ash White 0411 139 654**

Welcome to our 13th on property ram sale.

In 2020 we had the challenges of COVID for the first time. We managed to run an on-property ram sale being registered as a COVID SAFE business and the auction interfaced with AuctionsPlus. 2021 could present a bigger challenge and at the time of writing this the state is once again in lock down. We remain committed to running the sale on-property to assist you and keep everyone safe, we have once again registered the business as COVID SAFE with the NSW Government.

At the Sale COVID-safe measures will be in place. To reduce the COVID risk we would ask that no more than 2 people per business attend. Please do not attend if you have travelled to a hot spot in the last 2 weeks, have been in contact with someone suspected of having coronavirus, or have any symptoms of the virus. If this prevents you from attending, please contact Craig or Jenny (or the Agents) for alternative arrangements or register to bid on AuctionsPlus.

We present 110 vet checked rams that are all above breed average on the BLX index. The team of rams have not been supplemented with grain and are presented in a condition that does not compromise their fertility or ability to work at the point of sale. Rams that carry excess condition/weight at the point of joining can suffer short term infertility and/or structural injuries, something we wish to avoid for our ram buyers that join in spring.

We are no longer showing our sheep as our breeding objectives for production traits (Carcase, Fat, Muscle, Fertility and limiting Adult Body weight) take us further away from the show ring. As we move away from the show ring, we still remain committed to structural soundness. Soundness covers a spectrum of areas including legs, pasterns, backline etc which we always take into consideration. Feet and toes get special attention at NA and this is the second year that the rams in the catalogue are presented with a toe score. Rams catalogued for sale are score 1 or 2.

Details on our breeding objectives, foot scoring and new logo's can be found on the New Armatree website **newarmatree.com.au**.

Jenny and Craig Bradley

Please bring this catalogue with you on sale day.



Please check in. It's mandatory.

**We're helping keep our community COVID safe
by recording contact details for contact tracing.**



It's easy to check in:

- 1** Scan the QR code with your smartphone camera or QR code reader.
- 2** Follow the prompts on the Service NSW app or on the Service NSW webform.
- 3** Don't forget to check out when you leave.

If you do not have a smartphone, please ask a staff member for an alternative method to check in.

We respect your privacy

When you scan the QR code, the only personal information sent to Service NSW is your Customer ID, the location of the business you are visiting, time and the date of your visit. The business will not see or collect this information and it will only be used for contact tracing. We only keep this information for 28 days unless required for contact tracing related to a COVID-19 hotspot. Please refer to the collection notice in the app for more information.

This QR code is for C & J Pastoral - New Armadale Border Leicesters, 515 Armadale Road, Armadale NSW, Australia.
55423





'New Armatree' Health Record

Flock tested OJD negative -

Pooled Faecal Culture - Ovine Johnes Disease

Date test certified: 6th August 2020

Brucellosis Flock Accreditation No.: Cw 99/17

Expiry Date: August 2022

Vaccinated with 6 in1 at marking and weaning

Last vaccination: 5th August, 2021

Shorn: 12th June, 2021

Drenched: 5th August, 2021

We recommend that you quarantine drench your rams when you get them home, according to your drench resistance and rotation program.

No toes have been trimmed on our sale rams.

Rams are presented in pens for sale
with no straw.

All Rams Vet inspected and checked:
Monday, 6th September, 2021
by Dr Nadine Allan, Gilgandra Veterinary Clinic



Measured for Profit



NEW ARMATREE
BORDER LEICESTERS

Memorandum of Sires used at 'New Armatree' in the 2020 Breeding Season

- **New Armatree 2018/0116 (G419) Black disks**
Sire: New Armatree 2016/0093 (F9467)
- **New Armatree 2018/0184 (G1753) Blue disks**
Sire: New Armatree 2015/0070 (F8919)
- **New Armatree 2019/0012 (G1257) Red disks**
Sire: New Armatree 2016/0324 (G9458)
- **New Armatree 2018/0020 (G1256) Red disks**
Sire: New Armatree 2016/0324 (F9458)
- **Two Dot Boomer 2017/0404 (G261) Orange disks**
Sire: Jackson 2011/0136
- **New Armatree 2018/0283 (G1750) Green disks**
Sire: Gleneith 2016/0329 (F7280)
- **New Armatree 2018/0160 (G1255) Pink disks**
Sire: New Armatree 2016/0083 (F9456)
- **Kegra 2018/0060 (G1447) by artificial insemination**
White disks
Sire: Kegra 2016/0058 (F4896)
- **Womboota 2015/0021 (F8962) by artificial insemination**
Purple disks
Sire: Johnos 2011/0083 (F5400)

Sale Catalogue Averages and Trends

To assist you with your selection, we have included the following table which shows the catalogue average value for all traits along with the highest and lowest figure in the catalogue for that trait. For your interest, we have also included the averages from the past two catalogues so you can monitor the genetic trends of the sale rams we present each year.

Catalogue	Bwt	Mwwt	Pwwt	Pfat	Pemd	NLW %	BLX
Highest 2021	0.6	1.5	12.2	1.7	2.2	23	144.7
Lowest 2021	-0.2	-1.6	4.7	-1.5	-1.0	8	119.9
Average 2021	0.3	0.0	8.6	0.2	0.9	14.1	130.6
Average 2020	0.2	-0.1	7.7	0.2	0.9	11.6	125.0
Average 2019	0.3	0.5	7.7	0.4	0.9	10.3	125.8

The 2021 SuperBorder cut off BLX Index figure is 120.5.

There are 109 rams of the 110 rams catalogued that are \$SuperBorder\$. Those rams will have a yellow SuperBorder button behind their lot number tag. Those ASBVs marked with an * indicate the animal is in the **top 20%** of the breed for that particular trait. If you would like to discuss these ASBVs further, please ask us on sale day.

On Page 44 of the catalogue you will find a **Percentile Report**. In this report are a range of trait figures from the top of the breed to the bottom of the breed. The 50 percentile band is close to the average for the breed. Use this chart to check where animals fit within the breed for particular traits and index.

The BLX Index

This is a **Border Leicester Crossing Index** and has been designed by Lambplan to better reflect the desired traits for first cross ewe production. Within the **BLX Index** there is more emphasis placed on the maternal traits such as maternal weaning weight and Number of Lambs Weaned (NLW) as well as early growth while capping adult ewe weights. The BLX Index can not and should not be compared to the Maternal \$ Index you might see in other catalogues. The Maternal \$ Index will be discontinued in the next 12 - 18 months because it is less industry relevant compared to the BLX Index



Understanding the Traits in the Catalogue (ASBVs)

All Australian Sheep Breeding Values (ASBVs) used in this catalogue are based on the Sheep Genetics Australia Lambplan Maternal analysis on 15th August, 2021.



Abbreviation	Trait	Units	Description
BWT	Birth weight	kg	Genetic difference in liveweight at birth
MWWT	Maternal Weaning weight	kg	Estimate of female progeny's ability to provide a good maternal environment
PWT	Post weaning weight	kg	Genetic difference in live weight gain between weaning and 10 months of age (growth)
PFAT	Post weaning fat depth	mm	Genetic difference in fat depth at 10 months of age
PEMD	Post weaning eye muscle depth	mm	Genetic difference in eye muscle depth at the loin at 10 months of age
NLW	Number of Lambs Weaned	%	Estimates the genetic difference between female progeny of a ram for the number of lambs weaned
BLX	Border Leicester Crossing Index		Indicates the relative value of an animal based on its suitability for first cross ewe and wether production
Acc	Accuracies	%	Are a reflection on the amount and quality of information available used to calculate ASBVs for each animal. Accuracies are important but are more relevant to people purchasing stud rams.

For more information about individual ASBVs and Indexes please visit www.genetics.mla.com.au

Please remember that it is the average of your ram team that is more important than the absolute values for each individual ram.

Selecting rams with suitable ASBVs for individual traits (according to your breeding objectives), may be better than selecting rams with a high BLX index. The important thing to remember is that your new rams should have a better average than your existing ram team. If this is true, then your ram team is improving year on year.

Lot 1		Tag No. 24		Twin		Sire TD170404	
BWT	<i>Acc</i>	MWWT	<i>Acc</i>	WWT	<i>Acc</i>	PWT	<i>Acc</i>
0.3	63	1.0	48	4.5	70	7.6	70
PFAT	<i>Acc</i>	PEMD	<i>Acc</i>	NLW	<i>Acc</i>	BLX	<i>Acc</i>
0.5	70	-0.3	69	8	39	123.8	44

Purchaser_____ \$_____



Lot 2

Lot 2		Tag No. 402		Twin		Sire NA180020	
BWT	<i>Acc</i>	MWWT	<i>Acc</i>	WWT	<i>Acc</i>	PWT	<i>Acc</i>
0.6	60	0.1	41	7.2*	68	10.9*	69
PFAT	<i>Acc</i>	PEMD	<i>Acc</i>	NLW	<i>Acc</i>	BLX	<i>Acc</i>
-0.9	68	-0.3	66	8	35	121.9	41

Purchaser_____ \$_____



NEW ARMATREE
BORDER LEICESTERS



Lot 3

Lot 3		Tag No. 311		Twin		Sire NA180184	
BWT	<i>Acc</i>	MWWT	<i>Acc</i>	WWT	<i>Acc</i>	PWT	<i>Acc</i>
0.5	62	-0.6	44	5.8	69	9.2	69
PFAT	<i>Acc</i>	PEMD	<i>Acc</i>	NLW	<i>Acc</i>	BLX	<i>Acc</i>
-0.5	69	0.6	66	10	39	125.5	43

Purchaser _____ \$ _____

Lot 4		Tag No. 528		Single		Sire NA180020	
BWT	<i>Acc</i>	MWWT	<i>Acc</i>	WWT	<i>Acc</i>	PWT	<i>Acc</i>
0.3	69	0.7	45	6.0	70	8.6	70
PFAT	<i>Acc</i>	PEMD	<i>Acc</i>	NLW	<i>Acc</i>	BLX	<i>Acc</i>
-0.7	69	-0.8	67	14	37	124.2	43

Purchaser _____ \$ _____

Lot 5		Tag No. 412		Single		Sire NA190012	
BWT	<i>Acc</i>	MWWT	<i>Acc</i>	WWT	<i>Acc</i>	PWT	<i>Acc</i>
0.1	60	0.4	40	5.4	67	8.4	68
PFAT	<i>Acc</i>	PEMD	<i>Acc</i>	NLW	<i>Acc</i>	BLX	<i>Acc</i>
-0.1	67	1.1*	64	9	34	126.5	40

Purchaser _____ \$ _____



Lot 6

Lot 6		Tag No. 469		Twin		Sire NA180116	
BWT	<i>Acc</i>	MWWT	<i>Acc</i>	WWT	<i>Acc</i>	PWT	<i>Acc</i>
0.2	66	-0.7	52	4.6	72	7.3	72
PFAT	<i>Acc</i>	PEMD	<i>Acc</i>	NLW	<i>Acc</i>	BLX	<i>Acc</i>
0.0	72	1.9*	70	14	42	133.1	47

Purchaser_____ \$_____

Lot 7		Tag No. 364		Twin		Sire NA180020	
BWT	<i>Acc</i>	MWWT	<i>Acc</i>	WWT	<i>Acc</i>	PWT	<i>Acc</i>
0.3	60	0.6	40	5.8	68	8.2	63
PFAT	<i>Acc</i>	PEMD	<i>Acc</i>	NLW	<i>Acc</i>	BLX	<i>Acc</i>
0.9*	68	1.0*	66	13	33	131.6*	40

Purchaser_____ \$_____



Lot 8

Lot 8		Tag No. 168		Twin		Sire NA180184	
BWT	<i>Acc</i>	MWWT	<i>Acc</i>	WWT	<i>Acc</i>	PWT	<i>Acc</i>
0.5	59	0.5	44	7.4*	69	10.6*	70
PFAT	<i>Acc</i>	PEMD	<i>Acc</i>	NLW	<i>Acc</i>	BLX	<i>Acc</i>
-1.1	69	0.0	67	15*	38	134.4*	43

Purchaser_____ \$_____

Lot 9		Tag No. 167		Single		Sire NA180184	
BWT	<i>Acc</i>	MWWT	<i>Acc</i>	WWT	<i>Acc</i>	PWT	<i>Acc</i>
0.3	60	0.3	40	8.9*	68	10.6*	69
PFAT	<i>Acc</i>	PEMD	<i>Acc</i>	NLW	<i>Acc</i>	BLX	<i>Acc</i>
-1.1	68	1.0*	66	13	35	132.8*	41

Purchaser_____ \$_____

Lot 10		Tag No. 155		Triplet		Sire W150021	
BWT	<i>Acc</i>	MWWT	<i>Acc</i>	WWT	<i>Acc</i>	PWT	<i>Acc</i>
0.4	64	0.0	52	5.8	69	8.1	68
PFAT	<i>Acc</i>	PEMD	<i>Acc</i>	NLW	<i>Acc</i>	BLX	<i>Acc</i>
-0.2	70	0.7	68	14	40	131.9*	45

Purchaser_____ \$_____

Lot 11		Tag No. 154		Triplet		Sire W150021	
BWT	<i>Acc</i>	MWWT	<i>Acc</i>	WWT	<i>Acc</i>	PWT	<i>Acc</i>
0.3	64	-0.1	52	5.5	70	7.6	71
PFAT	<i>Acc</i>	PEMD	<i>Acc</i>	NLW	<i>Acc</i>	BLX	<i>Acc</i>
0.2	70	1.4*	68	13	42	134.2*	48

Purchaser_____ \$_____



Lot 12

Lot 12		Tag No. 113		Triplet		Sire K180060	
BWT	<i>Acc</i>	MWWT	<i>Acc</i>	WWT	<i>Acc</i>	PWT	<i>Acc</i>
0.1	66	-0.2	49	6.0	70	8.9	71
PFAT	<i>Acc</i>	PEMD	<i>Acc</i>	NLW	<i>Acc</i>	BLX	<i>Acc</i>
1.1*	71	1.3*	69	18*	41	137.0*	45

Purchaser_____ \$_____

Lot 13		Tag No. 180		Quad		Sire NA180116	
BWT	<i>Acc</i>	MWWT	<i>Acc</i>	WWT	<i>Acc</i>	PWT	<i>Acc</i>
0.1	66	-1.1	32	3.6	72	6.5	72
PFAT	<i>Acc</i>	PEMD	<i>Acc</i>	NLW	<i>Acc</i>	BLX	<i>Acc</i>
0.2	72	1.3*	70	17*	40	130.9	46

Purchaser_____ \$_____

Lot 14	Tag No. 42	Twin	Sire NA180116
BWT <i>Acc</i>	MWWT <i>Acc</i>	WWT <i>Acc</i>	PWT <i>Acc</i>
0.3 64	-0.4 47	5.2 71	8.3 71
PFAT <i>Acc</i>	PEMD <i>Acc</i>	NLW <i>Acc</i>	BLX <i>Acc</i>
1.6* 71	2.2* 69	18* 38	139.0* 44

Purchaser_____ \$_____

Lot 15	Tag No. 493	Triplet	Sire NA190012
BWT <i>Acc</i>	MWWT <i>Acc</i>	WWT <i>Acc</i>	PWT <i>Acc</i>
0.3 63	-0.3 42	6.0 70	8.9 70
PFAT <i>Acc</i>	PEMD <i>Acc</i>	NLW <i>Acc</i>	BLX <i>Acc</i>
0.6* 69	-0.2 67	23* 34	130.9 41

Purchaser_____ \$_____

Lot 16	Tag No. 108	Twin	Sire K180060
BWT <i>Acc</i>	MWWT <i>Acc</i>	WWT <i>Acc</i>	PWT <i>Acc</i>
0.3 63	0.1 42	7.2* 70	11.6* 70
PFAT <i>Acc</i>	PEMD <i>Acc</i>	NLW <i>Acc</i>	BLX <i>Acc</i>
1.0* 70	0.7 69	18* 37	135.0* 42

Purchaser_____ \$_____

Lot 17	Tag No. 265	Twin	Sire NA180116
BWT <i>Acc</i>	MWWT <i>Acc</i>	WWT <i>Acc</i>	PWT <i>Acc</i>
0.4 65	-0.3 49	6.7* 72	10.8* 72
PFAT <i>Acc</i>	PEMD <i>Acc</i>	NLW <i>Acc</i>	BLX <i>Acc</i>
0.0 72	0.9* 70	18* 38	139.8* 45

Purchaser_____ \$_____

Lot 18	Tag No. 147	Twin	Sire NA180116
BWT <i>Acc</i>	MWWT <i>Acc</i>	WWT <i>Acc</i>	PWT <i>Acc</i>
0.3 65	-0.3 30	4.3 72	7.8 72
PFAT <i>Acc</i>	PEMD <i>Acc</i>	NLW <i>Acc</i>	BLX <i>Acc</i>
0.9* 72	1.3* 69	16* 40	132.4* 46

Purchaser_____ \$_____

Lot 19	Tag No. 361	Twin	Sire NA180160
BWT <i>Acc</i>	MWWT <i>Acc</i>	WWT <i>Acc</i>	PWT <i>Acc</i>
0.3 61	-0.4 43	4.1 69	7.2 70
PFAT <i>Acc</i>	PEMD <i>Acc</i>	NLW <i>Acc</i>	BLX <i>Acc</i>
0.9* 69	1.3* 67	16* 35	129.9 41

Purchaser _____ \$ _____

Lot 20	Tag No. 247	Twin	Sire NA180184
BWT <i>Acc</i>	MWWT <i>Acc</i>	WWT <i>Acc</i>	PWT <i>Acc</i>
0.4 62	-0.5 48	4.9 71	7.8 71
PFAT <i>Acc</i>	PEMD <i>Acc</i>	NLW <i>Acc</i>	BLX <i>Acc</i>
-0.1 71	1.2* 69	15* 40	131.5 45

Purchaser _____ \$ _____

Lot 21	Tag No. 133	Twin	Sire NA180116
BWT <i>Acc</i>	MWWT <i>Acc</i>	WWT <i>Acc</i>	PWT <i>Acc</i>
0.3 63	-0.4 54	6.6* 72	9.8 73
PFAT <i>Acc</i>	PEMD <i>Acc</i>	NLW <i>Acc</i>	BLX <i>Acc</i>
0.5* 72	1.3* 70	20* 42	142.7* 48

Purchaser _____ \$ _____

Lot 22	Tag No. 437	Twin	Sire NA160093
BWT <i>Acc</i>	MWWT <i>Acc</i>	WWT <i>Acc</i>	PWT <i>Acc</i>
0.3 65	0.0 57	6.0 72	10.0* 72
PFAT <i>Acc</i>	PEMD <i>Acc</i>	NLW <i>Acc</i>	BLX <i>Acc</i>
0.3 72	1.1* 70	15* 44	131.9* 49

Purchaser _____ \$ _____

Lot 23	Tag No. 72	Single	Sire NA180116
BWT <i>Acc</i>	MWWT <i>Acc</i>	WWT <i>Acc</i>	PWT <i>Acc</i>
0.1 65	-0.1 50	5.2 71	7.6 71
PFAT <i>Acc</i>	PEMD <i>Acc</i>	NLW <i>Acc</i>	BLX <i>Acc</i>
1.1* 71	2.0* 69	9 39	132.7* 445

Purchaser _____ \$ _____

Lot 24	Tag No. 436	Single	Sire NA190012
BWT <i>Acc</i>	MWWT <i>Acc</i>	WWT <i>Acc</i>	PWT <i>Acc</i>
0.2 62	0.0 46	4.7 70	7.0 70
PFAT <i>Acc</i>	PEMD <i>Acc</i>	NLW <i>Acc</i>	BLX <i>Acc</i>
-0.3 70	0.6 67	18* 36	129.8 42

Purchaser _____ \$ _____

Lot 25	Tag No. 132	Twin	Sire NA180116
BWT <i>Acc</i>	MWWT <i>Acc</i>	WWT <i>Acc</i>	PWT <i>Acc</i>
0.2 63	0.0 54	5.5 72	8.7 73
PFAT <i>Acc</i>	PEMD <i>Acc</i>	NLW <i>Acc</i>	BLX <i>Acc</i>
0.3 72	1.5* 70	22* 42	144.7* 48

Purchaser _____ \$ _____

Lot 26	Tag No. 430	Twin	Sire NA160093
BWT <i>Acc</i>	MWWT <i>Acc</i>	WWT <i>Acc</i>	PWT <i>Acc</i>
0.1 66	-0.1 58	4.0 72	7.0 73
PFAT <i>Acc</i>	PEMD <i>Acc</i>	NLW <i>Acc</i>	BLX <i>Acc</i>
0.8* 73	1.3* 70	16* 46	131.9* 50

Purchaser _____ \$ _____

Lot 27	Tag No. 179	Quad	Sire NA180116
BWT <i>Acc</i>	MWWT <i>Acc</i>	WWT <i>Acc</i>	PWT <i>Acc</i>
0.3 66	-1.1 52	5.4 72	9.0 72
PFAT <i>Acc</i>	PEMD <i>Acc</i>	NLW <i>Acc</i>	BLX <i>Acc</i>
0.2 72	1.3* 70	17* 40	135.2* 48

Purchaser _____ \$ _____

Lot 28	Tag No. 202	Twin	Sire NA180184
BWT <i>Acc</i>	MWWT <i>Acc</i>	WWT <i>Acc</i>	PWT <i>Acc</i>
0.2 641	0.8 42	5.4 69	8.4 69
PFAT <i>Acc</i>	PEMD <i>Acc</i>	NLW <i>Acc</i>	BLX <i>Acc</i>
-0.4 69	1.3* 66	14 35	137.9* 41

Purchaser _____ \$ _____

Lot 29	Tag No. 452	Twin	Sire NA180250
BWT <i>Acc</i>	MWWT <i>Acc</i>	WWT <i>Acc</i>	PWT <i>Acc</i>
0.1 67	1.2 42	5.6 69	7.6 70
PFAT <i>Acc</i>	PEMD <i>Acc</i>	NLW <i>Acc</i>	BLX <i>Acc</i>
-1.4 70	1.6* 67	19* 35	142.9* 41

Purchaser_____ \$_____

Lot 30	Tag No. 30	Triplet	Sire NA180116
BWT <i>Acc</i>	MWWT <i>Acc</i>	WWT <i>Acc</i>	PWT <i>Acc</i>
0.0 63	0.9 52	4.3 69	7.7 71
PFAT <i>Acc</i>	PEMD <i>Acc</i>	NLW <i>Acc</i>	BLX <i>Acc</i>
0.4* 71	2.0* 70	17* 41	141.4* 47

Purchaser_____ \$_____

Lot 31	Tag No. 403	Twin	Sire NA190012
BWT <i>Acc</i>	MWWT <i>Acc</i>	WWT <i>Acc</i>	PWT <i>Acc</i>
0.4 60	-0.3 41	6.3 68	9.9 61
PFAT <i>Acc</i>	PEMD <i>Acc</i>	NLW <i>Acc</i>	BLX <i>Acc</i>
0.7* 67	0.5 65	13 34	127.8 40

Purchaser_____ \$_____

Lot 32	Tag No. 315	Twin	Sire NA180184
BWT <i>Acc</i>	MWWT <i>Acc</i>	WWT <i>Acc</i>	PWT <i>Acc</i>
0.4 61	1.0 44	5.7 68	8.3 69
PFAT <i>Acc</i>	PEMD <i>Acc</i>	NLW <i>Acc</i>	BLX <i>Acc</i>
-1.1 69	0.8 68	9 37	128.8 42

Purchaser_____ \$_____

Lot 33	Tag No. 353	Triplet	Sire NA190012
BWT <i>Acc</i>	MWWT <i>Acc</i>	WWT <i>Acc</i>	PWT <i>Acc</i>
0.2 60	-0.8 42	5.7 68	10.4* 68
PFAT <i>Acc</i>	PEMD <i>Acc</i>	NLW <i>Acc</i>	BLX <i>Acc</i>
0.9* 68	0.7 65	13 35	129.0 39

Purchaser_____ \$_____

Lot 34	Tag No. 476	Twin	Sire NA180250
BWT <i>Acc</i>	MWWT <i>Acc</i>	WWT <i>Acc</i>	PWT <i>Acc</i>
0.1 61	0.5 41	3.3 68	5.5 69
PFAT <i>Acc</i>	PEMD <i>Acc</i>	NLW <i>Acc</i>	BLX <i>Acc</i>
-0.9 69	1.0* 67	15* 34	128.6 41

Purchaser_____ \$_____

Lot 35	Tag No. 465	Triplet	Sire NA190012
BWT <i>Acc</i>	MWWT <i>Acc</i>	WWT <i>Acc</i>	PWT <i>Acc</i>
0.3 61	0.0 43	4.9 59	8.7 69
PFAT <i>Acc</i>	PEMD <i>Acc</i>	NLW <i>Acc</i>	BLX <i>Acc</i>
-0.3 69	-0.1 66	14 38	127.4 41

Purchaser_____ \$_____

Lot 36	Tag No. 487	Twin	Sire NA180250
BWT <i>Acc</i>	MWWT <i>Acc</i>	WWT <i>Acc</i>	PWT <i>Acc</i>
0.1 60	1.0 42	4.5 68	8.8 69
PFAT <i>Acc</i>	PEMD <i>Acc</i>	NLW <i>Acc</i>	BLX <i>Acc</i>
-0.5 69	1.7* 65	9 35	128.0 41

Purchaser_____ \$_____

Lot 37	Tag No. 390	Twin	Sire NA180020
BWT <i>Acc</i>	MWWT <i>Acc</i>	WWT <i>Acc</i>	PWT <i>Acc</i>
0.2 61	-0.3 42	5.3 69	9.5 70
PFAT <i>Acc</i>	PEMD <i>Acc</i>	NLW <i>Acc</i>	BLX <i>Acc</i>
1.3* 69	1.2* 67	16* 34	134.4* 41

Purchaser_____ \$_____

Lot 38	Tag No. 215	Triplet	Sire NA180116
BWT <i>Acc</i>	MWWT <i>Acc</i>	WWT <i>Acc</i>	PWT <i>Acc</i>
0.4 65	-0.5 50	6.5 71	8.8 72
PFAT <i>Acc</i>	PEMD <i>Acc</i>	NLW <i>Acc</i>	BLX <i>Acc</i>
0.3 72	0.8 69	22* 39	142.5* 45

Purchaser_____ \$_____

HALCROFT & BENNETT

LIVESTOCK - REAL ESTATE - PROPERTY SALES

COONAMBLE GULARGAMBONE & WARREN DISTRICT

LICENSED STOCK & STATION, REAL ESTATE AGENT

**For all your livestock, property
and real estate needs.**

77 Castlereagh Street, PO Box 44
COONAMBLE NSW 2829

Phone: 02 6822 1444 Fax: 02 6822 2388

Email: office@halcroftandbennett.net.au
Website: www.halcroftandbennett.com.au

David Thompson

0428 214 465

livestock@halcroftandbennett.net.au

Steven Colwell

0428 480 117

gular@halcroftandbennett.net.au

Ulrich Eins

0428 916 066

ulrich@halcroftandbennett.net.au

Mary Skuthorp

0408 262 075

sales@halcroftandbennett.net.au

Fiona Foodey

0487 221 100

realestate@halcroftandbennett.net.au

Lot 39	Tag No. 298	Twin	Sire NA190012
BWT <i>Acc</i>	MWWT <i>Acc</i>	WWT <i>Acc</i>	PWT <i>Acc</i>
0.3 61	-0.2 41	5.5 69	8.5 69
PFAT <i>Acc</i>	PEMD <i>Acc</i>	NLW <i>Acc</i>	BLX <i>Acc</i>
1.1* 68	1.4* 66	14 34	130.6 40

Purchaser_____ \$_____

Lot 40	Tag No. 138	Triplet	Sire K180060
BWT <i>Acc</i>	MWWT <i>Acc</i>	WWT <i>Acc</i>	PWT <i>Acc</i>
0.2 65	0.2 46	4.8 71	9.2 71
PFAT <i>Acc</i>	PEMD <i>Acc</i>	NLW <i>Acc</i>	BLX <i>Acc</i>
0.1 71	0.1 69	14 39	125.1 44

Purchaser_____ \$_____

Lot 41	Tag No. 354	Triplet	Sire NA190012
BWT <i>Acc</i>	MWWT <i>Acc</i>	WWT <i>Acc</i>	PWT <i>Acc</i>
0.4 60	-0.8 42	5.5 66	9.8 68
PFAT <i>Acc</i>	PEMD <i>Acc</i>	NLW <i>Acc</i>	BLX <i>Acc</i>
0.6* 69	0.5 65	13 35	127.2 39

Purchaser_____ \$_____

Lot 42	Tag No. 81	Twin	Sire K180060
BWT <i>Acc</i>	MWWT <i>Acc</i>	WWT <i>Acc</i>	PWT <i>Acc</i>
0.1 65	0.8 46	5.2 71	9.2 71
PFAT <i>Acc</i>	PEMD <i>Acc</i>	NLW <i>Acc</i>	BLX <i>Acc</i>
1.7* 71	0.8 69	9 39	125.2 44

Purchaser_____ \$_____

Lot 43	Tag No. 385	Single	Sire NA190020
BWT <i>Acc</i>	MWWT <i>Acc</i>	WWT <i>Acc</i>	PWT <i>Acc</i>
0.2 62	0.6 45	3.1 70	5.2 70
PFAT <i>Acc</i>	PEMD <i>Acc</i>	NLW <i>Acc</i>	BLX <i>Acc</i>
-0.3 70	0.5 67	15* 36	127.8 42

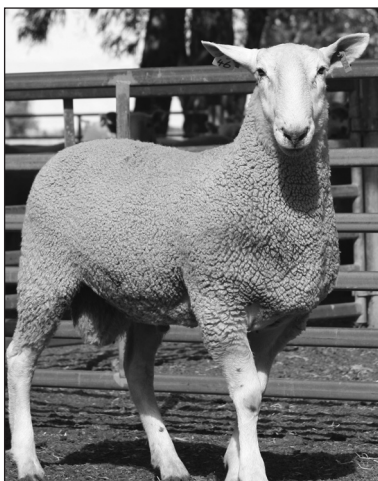
Purchaser_____ \$_____

Lot 44	Tag No. 351	Triplet	Sire NA190012
BWT <i>Acc</i> 0.3 59	MWWT <i>Acc</i> -0.4 42	WWT <i>Acc</i> 4.2 68	PWT <i>Acc</i> 6.9 68
PFAT <i>Acc</i> -0.4 60	PEMD <i>Acc</i> 0.3 59	NLW <i>Acc</i> 14 33	BLX <i>Acc</i> 121.5 39

Purchaser _____ \$ _____

Lot 45	Tag No. 149	Twin	Sire NA180160
BWT <i>Acc</i> 0.3 61	MWWT <i>Acc</i> -0.8 43	WWT <i>Acc</i> 4.7 69	PWT <i>Acc</i> 8.6 69
PFAT <i>Acc</i> 1.4* 68	PEMD <i>Acc</i> 1.0* 66	NLW <i>Acc</i> 8 35	BLX <i>Acc</i> 122.7 41

Purchaser _____ \$ _____



Lot 46

Lot 46	Tag No. 324	Triplet	Sire TD170404
BWT <i>Acc</i> 0.4 63	MWWT <i>Acc</i> -0.1 41	WWT <i>Acc</i> 6.2 69	PWT <i>Acc</i> 9.8 70
PFAT <i>Acc</i> 0.1 69	PEMD <i>Acc</i> 0.3 67	NLW <i>Acc</i> 14 36	BLX <i>Acc</i> 128.1 42

Purchaser _____ \$ _____

Lot 47		Tag No. 336		Single		Sire NA190012	
BWT	<i>Acc</i>	MWWT	<i>Acc</i>	WWT	<i>Acc</i>	PWT	<i>Acc</i>
0.2	61	0.1	41	5.2	68	7.4	69
PFAT	<i>Acc</i>	PEMD	<i>Acc</i>	NLW	<i>Acc</i>	BLX	<i>Acc</i>
0.2	68	1.1*	65	10	33	124.6	40

Purchaser_____ \$_____

Lot 48		Tag No. 448		Twin		Sire NA160093	
BWT	<i>Acc</i>	MWWT	<i>Acc</i>	WWT	<i>Acc</i>	PWT	<i>Acc</i>
0.2	65	-0.8	53	4.4	7.1	7.7	71
PFAT	<i>Acc</i>	PEMD	<i>Acc</i>	NLW	<i>Acc</i>	BLX	<i>Acc</i>
0.2	71	0.7	69	12	43	122.3	47

Purchaser_____ \$_____



Lot 49

Lot 49		Tag No. 404		Twin		Sire NA190012	
BWT	<i>Acc</i>	MWWT	<i>Acc</i>	WWT	<i>Acc</i>	PWT	<i>Acc</i>
0.5	60	-0.3	41	6.6*	68	10.3*	68
PFAT	<i>Acc</i>	PEMD	<i>Acc</i>	NLW	<i>Acc</i>	BLX	<i>Acc</i>
0.8*	67	0.6	65	13	34	128.3	40

Purchaser_____ \$_____

Lot 50	Tag No. 348	Triplet	Sire TD170404
BWT <i>Acc</i> 0.3 64	MWWT <i>Acc</i> 0.8 48	WWT <i>Acc</i> 4.1 71	PWT <i>Acc</i> 6.6 71
PFAT <i>Acc</i> 0.4* 71	PEMD <i>Acc</i> -1.0 69	NLW <i>Acc</i> 16* 39	BLX <i>Acc</i> 121.1 44

Purchaser_____ \$_____

Lot 51	Tag No. 67	Twin	Sire NA180160
BWT <i>Acc</i> 0.3 60	MWWT <i>Acc</i> -0.2 41	WWT <i>Acc</i> 4.5 69	PWT <i>Acc</i> 7.5 68
PFAT <i>Acc</i> 0.9* 68	PEMD <i>Acc</i> 1.2* 66	NLW <i>Acc</i> 9 34	BLX <i>Acc</i> 122.8 40

Purchaser_____ \$_____

Lot 52	Tag No. 470	Twin	Sire NA190012
BWT <i>Acc</i> 0.1 62	MWWT <i>Acc</i> 0.7 44	WWT <i>Acc</i> 2.8 70	PWT <i>Acc</i> 4.7 70
PFAT <i>Acc</i> -0.2 70	PEMD <i>Acc</i> 0.2 67	NLW <i>Acc</i> 15* 35	BLX <i>Acc</i> 121.8 41

Purchaser_____ \$_____

Lot 53	Tag No. 372	Twin	Sire NA190012
BWT <i>Acc</i> 0.3 62	MWWT <i>Acc</i> -0.3 44	WWT <i>Acc</i> 4.6 69	PWT <i>Acc</i> 7.0 69
PFAT <i>Acc</i> 0.1 69	PEMD <i>Acc</i> 1.2* 68	NLW <i>Acc</i> 14 38	BLX <i>Acc</i> 128.0 41

Purchaser_____ \$_____



Agricultural Contracting

Yard building, repairs and
modifications, all types of rural fencing.

Lamb marking/mulesing service.

We also offer spraying and grain
freight in season.

Justin & Sara Worner

0428 223 037

jswagcontracting@gmail.com



Lot 54

Lot 54		Tag No. 21		Twin		Sire NA180020	
BWT	<i>Acc</i>	MWWT	<i>Acc</i>	WWT	<i>Acc</i>	PWT	<i>Acc</i>
0.3	61	-0.8	43	6.2	70	9.7	70
PFAT	<i>Acc</i>	PEMD	<i>Acc</i>	NLW	<i>Acc</i>	BLX	<i>Acc</i>
0.5*	70	0.6	67	14	35	128.1	41

Purchaser _____ \$ _____

Lot 55		Tag No. 503		Twin		Sire NA190012	
BWT	<i>Acc</i>	MWWT	<i>Acc</i>	WWT	<i>Acc</i>	PWT	<i>Acc</i>
0.4	63	0.5	44	5.6	70	8.0	70
PFAT	<i>Acc</i>	PEMD	<i>Acc</i>	NLW	<i>Acc</i>	BLX	<i>Acc</i>
-0.4	69	-0.3	67	15*	35	124.0	42

Purchaser _____ \$ _____

Lot 56		Tag No. 293		Twin		Sire NA190012	
BWT	<i>Acc</i>	MWWT	<i>Acc</i>	WWT	<i>Acc</i>	PWT	<i>Acc</i>
0.4	61	0.2	41	7.2*	69	10.9*	69
PFAT	<i>Acc</i>	PEMD	<i>Acc</i>	NLW	<i>Acc</i>	BLX	<i>Acc</i>
-0.8	68	-0.4	66	13	34	126.4	40

Purchaser _____ \$ _____

Lot 57		Tag No. 88		Twin		Sire TD170404	
BWT	<i>Acc</i>	MWWT	<i>Acc</i>	WWT	<i>Acc</i>	PWT	<i>Acc</i>
0.4	64	0.5	46	6.2	71	9.2	71
PFAT	<i>Acc</i>	PEMD	<i>Acc</i>	NLW	<i>Acc</i>	BLX	<i>Acc</i>
0.6*	70	0.5	68	14	38	129.2	41

Purchaser_____ \$_____

Lot 58		Tag No. 263		Twin		Sire NA180160	
BWT	<i>Acc</i>	MWWT	<i>Acc</i>	WWT	<i>Acc</i>	PWT	<i>Acc</i>
0.3	62	-0.6	46	4.9	70	7.6	70
PFAT	<i>Acc</i>	PEMD	<i>Acc</i>	NLW	<i>Acc</i>	BLX	<i>Acc</i>
1.4*	70	1.6*	67	11	37	126.1	42

Purchaser_____ \$_____



Lot 59

Lot 59		Tag No. 445		Triplet		NA190012	
BWT	<i>Acc</i>	MWWT	<i>Acc</i>	WWT	<i>Acc</i>	PWT	<i>Acc</i>
0.5	61	0.2	42	5.6	69	8.2	69
PFAT	<i>Acc</i>	PEMD	<i>Acc</i>	NLW	<i>Acc</i>	BLX	<i>Acc</i>
-0.6	68	-0.4	68	13	36	124.9	41

Purchaser_____ \$_____

Lot 60	Tag No. 214	Twin	Sire TD170404
BWT <i>Acc</i>	MWWT <i>Acc</i>	WWT <i>Acc</i>	PWT <i>Acc</i>
0.3 63	0.3 44	4.4 70	6.8 70
PFAT <i>Acc</i>	PEMD <i>Acc</i>	NLW <i>Acc</i>	BLX <i>Acc</i>
0.6* 70	0.4 67	11 37	121.2 43

Purchaser_____ \$_____

Lot 61	Tag No. 370	Twin	Sire NA180020
BWT <i>Acc</i>	MWWT <i>Acc</i>	WWT <i>Acc</i>	PWT <i>Acc</i>
0.4 67	0.9 41	5.9 69	7.9 68
PFAT <i>Acc</i>	PEMD <i>Acc</i>	NLW <i>Acc</i>	BLX <i>Acc</i>
-1.3 69	0.1 67	12 35	126.4 41

Purchaser_____ \$_____

Lot 62	Tag No. 119	Twin	Sire NA180160
BWT <i>Acc</i>	MWWT <i>Acc</i>	WWT <i>Acc</i>	PWT <i>Acc</i>
0.3 58	0.1 39	4.0 60	6.1 60
PFAT <i>Acc</i>	PEMD <i>Acc</i>	NLW <i>Acc</i>	BLX <i>Acc</i>
0.8* 68	1.2* 66	11 32	124.2 37

Purchaser_____ \$_____

Lot 63	Tag No. 241	Twin	Sire NA180020
BWT <i>Acc</i>	MWWT <i>Acc</i>	WWT <i>Acc</i>	PWT <i>Acc</i>
0.6 60	0.1 39	8.3* 69	12.2* 69
PFAT <i>Acc</i>	PEMD <i>Acc</i>	NLW <i>Acc</i>	BLX <i>Acc</i>
-0.4 69	-0.2 68	11 33	129.2 39

Purchaser_____ \$_____

Lot 64	Tag No. 27	Twin	Sire NA180184
BWT <i>Acc</i>	MWWT <i>Acc</i>	WWT <i>Acc</i>	PWT <i>Acc</i>
0.4 62	-0.8 45	6.4* 70	8.3 70
PFAT <i>Acc</i>	PEMD <i>Acc</i>	NLW <i>Acc</i>	BLX <i>Acc</i>
-1.4 70	0.8 67	13 35	127.1 43

Purchaser_____ \$_____

Lot 65	Tag No. 416	Triplet	Sire NA190012
BWT <i>Acc</i>	MWWT <i>Acc</i>	WWT <i>Acc</i>	PWT <i>Acc</i>
0.3 62	-1.3 43	6.6* 69	9.2 69
PFAT <i>Acc</i>	PEMD <i>Acc</i>	NLW <i>Acc</i>	BLX <i>Acc</i>
0.1 68	0.3 68	16* 36	123.5 41

Purchaser_____ \$_____

Lot 66	Tag No. 425	Twin	Sire NA180184
BWT <i>Acc</i>	MWWT <i>Acc</i>	WWT <i>Acc</i>	PWT <i>Acc</i>
0.3 62	-0.6 45	5.1 69	8.4 70
PFAT <i>Acc</i>	PEMD <i>Acc</i>	NLW <i>Acc</i>	BLX <i>Acc</i>
-0.9 70	1.4* 67	12 37	129.3 43

Purchaser_____ \$_____

Lot 67	Tag No. 130	Twin	Sire NA180116
BWT <i>Acc</i>	MWWT <i>Acc</i>	WWT <i>Acc</i>	PWT <i>Acc</i>
0.4 65	-1.5 50	5.5 69	8.9 71
PFAT <i>Acc</i>	PEMD <i>Acc</i>	NLW <i>Acc</i>	BLX <i>Acc</i>
0.1 71	1.3* 69	12 39	127.6 45

Purchaser_____ \$_____

Lot 68	Tag No. 257	Twin	Sire NA180116
BWT <i>Acc</i>	MWWT <i>Acc</i>	WWT <i>Acc</i>	PWT <i>Acc</i>
0.3 65	-0.3 48	4.9 71	8.4 71
PFAT <i>Acc</i>	PEMD <i>Acc</i>	NLW <i>Acc</i>	BLX <i>Acc</i>
0.0 71	1.3* 69	15* 39	135.7* 45

Purchaser_____ \$_____

Lot 69	Tag No. 455	Twin	Sire NA180250
BWT <i>Acc</i>	MWWT <i>Acc</i>	WWT <i>Acc</i>	PWT <i>Acc</i>
-0.2 67	0.6 42	2.8 69	5.6 69
PFAT <i>Acc</i>	PEMD <i>Acc</i>	NLW <i>Acc</i>	BLX <i>Acc</i>
0.0 69	2.5* 67	19* 35	141.4* 41

Purchaser_____ \$_____

Lot 70	Tag No. 38	Twin	Sire NA180020
BWT <i>Acc</i> 0.4 61	MWWT <i>Acc</i> -1.6 43	WWT <i>Acc</i> 6.9* 69	PWT <i>Acc</i> 10.9* 69
PFAT <i>Acc</i> 0.4* 69	PEMD <i>Acc</i> 0.6 68	NLW <i>Acc</i> 10 35	BLX <i>Acc</i> 120.7 41

Purchaser_____ \$_____

Lot 71	Tag No. 206	Triplet	Sire NA180160
BWT <i>Acc</i> 0.3 61	MWWT <i>Acc</i> -0.3 44	WWT <i>Acc</i> 4.8 68	PWT <i>Acc</i> 8.3 69
PFAT <i>Acc</i> 1.6* 69	PEMD <i>Acc</i> 1.6* 65	NLW <i>Acc</i> 10 35	BLX <i>Acc</i> 129.0 41

Purchaser_____ \$_____

Lot 72	Tag No. 71	Single	Sire NA180020
BWT <i>Acc</i> 0.2 60	MWWT <i>Acc</i> -0.6 40	WWT <i>Acc</i> 5.4 69	PWT <i>Acc</i> 8.3 69
PFAT <i>Acc</i> 0.9* 69	PEMD <i>Acc</i> 0.5 66	NLW <i>Acc</i> 10 33	BLX <i>Acc</i> 123.6 40

Purchaser_____ \$_____

Lot 73	Tag No. 272	Single	Sire NA180116
BWT <i>Acc</i> 0.4 65	MWWT <i>Acc</i> 0.0 48	WWT <i>Acc</i> 5.0 72	PWT <i>Acc</i> 8.3 72
PFAT <i>Acc</i> 0.0 72	PEMD <i>Acc</i> 1.2* 70	NLW <i>Acc</i> 13 40	BLX <i>Acc</i> 134.5* 48

Purchaser_____ \$_____



Lot 74

Lot 74		Tag No. 235		Twin		Sire NA190012	
BWT	<i>Acc</i>	MWWT	<i>Acc</i>	WWT	<i>Acc</i>	PWT	<i>Acc</i>
0.3	62	-0.1	46	6.4*	69	10.1*	69
PFAT	<i>Acc</i>	PEMD	<i>Acc</i>	NLW	<i>Acc</i>	BLX	<i>Acc</i>
0.5*	69	0.6	68	17*	36	134.4*	42

Purchaser_____ \$_____

Lot 75		Tag No. 371		Twin		Sire NA190012	
BWT	<i>Acc</i>	MWWT	<i>Acc</i>	WWT	<i>Acc</i>	PWT	<i>Acc</i>
0.2	62	-0.3	41	4.7	69	8.2	69
PFAT	<i>Acc</i>	PEMD	<i>Acc</i>	NLW	<i>Acc</i>	BLX	<i>Acc</i>
0.8*	68	0.9*	65	15*	36	129.4	41

Purchaser_____ \$_____

Lot 76		Tag No. 64		Twin		Sire NA180116	
BWT	<i>Acc</i>	MWWT	<i>Acc</i>	WWT	<i>Acc</i>	PWT	<i>Acc</i>
0.3	64	-0.6	47	4.8	71	8.1	714
PFAT	<i>Acc</i>	PEMD	<i>Acc</i>	NLW	<i>Acc</i>	BLX	<i>Acc</i>
1.0*	71	1.3*	69	18*	38	132.7*	14

Purchaser_____ \$_____

Lot 77	Tag No. 517	Single	Sire NA180250
BWT <i>Acc</i>	MWWT <i>Acc</i>	WWT <i>Acc</i>	PWT <i>Acc</i>
0.0 61	1.0 42	5.5 68	8.6 69
PFAT <i>Acc</i>	PEMD <i>Acc</i>	NLW <i>Acc</i>	BLX <i>Acc</i>
1.3* 69	1.5* 65	14 35	133.6* 41

Purchaser_____ \$_____

Lot 78	Tag No. 526	Twin	Sire NA180250
BWT <i>Acc</i>	MWWT <i>Acc</i>	WWT <i>Acc</i>	PWT <i>Acc</i>
0.0 58	1.5* 43	4.1 69	6.6 70
PFAT <i>Acc</i>	PEMD <i>Acc</i>	NLW <i>Acc</i>	BLX <i>Acc</i>
0.2 69	2.1* 67	19* 35	139.0* 42

Purchaser_____ \$_____

Lot 79	Tag No. 157	Twin	Sire K180060
BWT <i>Acc</i>	MWWT <i>Acc</i>	WWT <i>Acc</i>	PWT <i>Acc</i>
0.3 65	0.4 48	5.3 72	8.2 72
PFAT <i>Acc</i>	PEMD <i>Acc</i>	NLW <i>Acc</i>	BLX <i>Acc</i>
0.3 71	0.7 69	14 40	128.2 45

Purchaser_____ \$_____

Lot 80	Tag No. 208	Twin	Sire 180184
BWT <i>Acc</i>	MWWT <i>Acc</i>	WWT <i>Acc</i>	PWT <i>Acc</i>
0.3 61	-0.7 41	4.0 69	8.6 69
PFAT <i>Acc</i>	PEMD <i>Acc</i>	NLW <i>Acc</i>	BLX <i>Acc</i>
1.0* 69	2.0* 66	14 36	132.9* 41

Purchaser_____ \$_____

Lot 81	Tag No. 127	Triplet	Sire K180060
BWT <i>Acc</i>	MWWT <i>Acc</i>	WWT <i>Acc</i>	PWT <i>Acc</i>
0.4 65	0.6 47	7.2* 71	11.4* 71
PFAT <i>Acc</i>	PEMD <i>Acc</i>	NLW <i>Acc</i>	BLX <i>Acc</i>
0.2 71	0.4 69	10 39	128.7 41

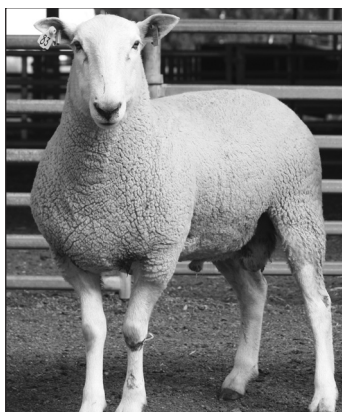
Purchaser_____ \$_____



Lot 82

Lot 82		Tag No. 316		Twin		Sire NA180184	
BWT	<i>Acc</i>	MWWT	<i>Acc</i>	WWT	<i>Acc</i>	PWT	<i>Acc</i>
0.5	61	1.0	41	6.6*	68	9.6	69
PFAT	<i>Acc</i>	PEMD	<i>Acc</i>	NLW	<i>Acc</i>	BLX	<i>Acc</i>
-1.1	69	0.7	68	9	37	130.9	42

Purchaser_____ \$_____



Lot 83

Lot 83		Tag No. 196		Single		Sire NA180020	
BWT	<i>Acc</i>	MWWT	<i>Acc</i>	WWT	<i>Acc</i>	PWT	<i>Acc</i>
0.2	61	0.3	44	4.2	70	6.6	70
PFAT	<i>Acc</i>	PEMD	<i>Acc</i>	NLW	<i>Acc</i>	BLX	<i>Acc</i>
0.1	69	1.1*	66	14	36	131.0	42

Purchaser_____ \$_____

Lot 84	Tag No. 146	Twin	Sire NA180116
BWT <i>Acc</i>	MWWT <i>Acc</i>	WWT <i>Acc</i>	PWT <i>Acc</i>
0.4 65	-0.3 50	5.4 72	9.3 72
PFAT <i>Acc</i>	PEMD <i>Acc</i>	NLW <i>Acc</i>	BLX <i>Acc</i>
1.3* 72	1.4* 69	16* 40	135.1* 45

Purchaser_____ \$_____

Lot 85	Tag No. 12	Twin	Sire NA180020
BWT <i>Acc</i>	MWWT <i>Acc</i>	WWT <i>Acc</i>	PWT <i>Acc</i>
0.3 60	-0.2 42	6.9* 68	11.3* 69
PFAT <i>Acc</i>	PEMD <i>Acc</i>	NLW <i>Acc</i>	BLX <i>Acc</i>
0.5* 68	1.1* 68	15* 34	134.0* 40

Purchaser_____ \$_____

Lot 86	Tag No. 340	Twin	Sire NA190012
BWT <i>Acc</i>	MWWT <i>Acc</i>	WWT <i>Acc</i>	PWT <i>Acc</i>
0.5 61	0.2 41	6.3 68	10.5* 69
PFAT <i>Acc</i>	PEMD <i>Acc</i>	NLW <i>Acc</i>	BLX <i>Acc</i>
0.3 68	0.3 65	14 34	131.2 40

Purchaser_____ \$_____

Lot 87	Tag No. 304	Triplet	Sire NA180116
BWT <i>Acc</i>	MWWT <i>Acc</i>	WWT <i>Acc</i>	PWT <i>Acc</i>
0.4 62	0.5 48	7.1* 71	10.5* 71
PFAT <i>Acc</i>	PEMD <i>Acc</i>	NLW <i>Acc</i>	BLX <i>Acc</i>
-0.3 71	-0.2 69	21* 38	138.7* 41

Purchaser_____ \$_____

Lot 88	Tag No. 362	Twin	Sire NA180160
BWT <i>Acc</i>	MWWT <i>Acc</i>	WWT <i>Acc</i>	PWT <i>Acc</i>
0.2 61	-0.4 43	3.8 69	6.3 70
PFAT <i>Acc</i>	PEMD <i>Acc</i>	NLW <i>Acc</i>	BLX <i>Acc</i>
1.1* 69	2.0* 67	15* 35	130.7 41

Purchaser_____ \$_____



For all your wool, livestock and property needs

**Call your local AWN Wool or Livestock
Specialist today or visit awn.net**

WOOL SPECIALISTS

Central & Western NSW

Brett Cooper 0407 136 129

Hunter Leeson 0448 613 330

Northern NSW

Harold Manttan 0418 253 976

John Croake 0428 977 589

LIVESTOCK SPECIALIST

Central & Western NSW

Peter Hargreaves

0409 321 001



00188-2108

Lot 89	Tag No. 163	Triplet	Sire NA180184
BWT <i>Acc</i>	MWWT <i>Acc</i>	WWT <i>Acc</i>	PWT <i>Acc</i>
0.2 60	0.2 44	5.3 69	7.8 70
PFAT <i>Acc</i>	PEMD <i>Acc</i>	NLW <i>Acc</i>	BLX <i>Acc</i>
-0.8 69	0.7 67	16* 37	134.0* 42

Purchaser_____ \$_____

Lot 90	Tag No. 303	Triplet	Sire NA180020
BWT <i>Acc</i>	MWWT <i>Acc</i>	WWT <i>Acc</i>	PWT <i>Acc</i>
0.3 62	-0.3 47	5.5 70	9.6 71
PFAT <i>Acc</i>	PEMD <i>Acc</i>	NLW <i>Acc</i>	BLX <i>Acc</i>
-0.1 70	0.9* 68	20* 38	136.6* 44

Purchaser_____ \$_____

Lot 91	Tag No. 111	Twin	Sire NA180184
BWT <i>Acc</i>	MWWT <i>Acc</i>	WWT <i>Acc</i>	PWT <i>Acc</i>
0.1 60	0.5 41	4.0 65	6.5 69
PFAT <i>Acc</i>	PEMD <i>Acc</i>	NLW <i>Acc</i>	BLX <i>Acc</i>
-0.5 68	1.8* 66	12 36	131.9* 41

Purchaser_____ \$_____

Lot 92	Tag No. 62	Twin	Sire NA180184
BWT <i>Acc</i>	MWWT <i>Acc</i>	WWT <i>Acc</i>	PWT <i>Acc</i>
0.2 62	-0.5 45	4.3 70	7.5 71
PFAT <i>Acc</i>	PEMD <i>Acc</i>	NLW <i>Acc</i>	BLX <i>Acc</i>
0.3 71	1.8* 68	18* 68	136.5* 43

Purchaser_____ \$_____

Lot 93	Tag No. 151	Twin	Sire NA180116
BWT <i>Acc</i>	MWWT <i>Acc</i>	WWT <i>Acc</i>	PWT <i>Acc</i>
0.2 63	0.2 47	4.5 70	7.6 70
PFAT <i>Acc</i>	PEMD <i>Acc</i>	NLW <i>Acc</i>	BLX <i>Acc</i>
0.4* 62	1.8* 61	18* 36	140.5* 42

Purchaser_____ \$_____



GILGANDRA
VETERINARY
CLINIC

*Pet and Livestock
health care advice*

Nadine Allan BVSc

6847 1129

0427 471 129

2 Enterprise Drive, Gilgandra

info@gilvets.com.au



Lot 94

Lot 94		Tag No. 31		Triplet		Sire NA180116	
BWT	<i>Acc</i>	MWWT	<i>Acc</i>	WWT	<i>Acc</i>	PWT	<i>Acc</i>
0.1	63	0.8	52	3.6	72	6.4	72
PFAT	<i>Acc</i>	PEMD	<i>Acc</i>	NLW	<i>Acc</i>	BLX	<i>Acc</i>
0.4*	72	2.2*	70	16*	41	141.8*	47

Purchaser _____ \$ _____

Lot 95		Tag No. 13		Twin		Sire NA180020	
BWT	<i>Acc</i>	MWWT	<i>Acc</i>	WWT	<i>Acc</i>	PWT	<i>Acc</i>
0.4	60	-0.2	41	7.2*	68	11.6*	69
PFAT	<i>Acc</i>	PEMD	<i>Acc</i>	NLW	<i>Acc</i>	BLX	<i>Acc</i>
0.0	68	0.9*	66	14	34	132.4*	40

Purchaser _____ \$ _____

Lot 96		Tag No. 92		Single		Sire K180060	
BWT	<i>Acc</i>	MWWT	<i>Acc</i>	WWT	<i>Acc</i>	PWT	<i>Acc</i>
0.4	64	0.7	44	7.1*	71	10.8*	71
PFAT	<i>Acc</i>	PEMD	<i>Acc</i>	NLW	<i>Acc</i>	BLX	<i>Acc</i>
0.4*	71	0.3	69	11	37	128.5*	43

Purchaser _____ \$ _____

Lot 97	Tag No. 95	Twin	Sire W150021
BWT <i>Acc</i>	MWWT <i>Acc</i>	WWT <i>Acc</i>	PWT <i>Acc</i>
0.6 64	-0.3 52	6.7* 71	9.9 71
PFAT <i>Acc</i>	PEMD <i>Acc</i>	NLW <i>Acc</i>	BLX <i>Acc</i>
-0.6 71	0.3 69	13 43	129.2 47

Purchaser_____ \$_____

Lot 98	Tag No. 357	Twin	Sire NA180020
BWT <i>Acc</i>	MWWT <i>Acc</i>	WWT <i>Acc</i>	PWT <i>Acc</i>
0.3 61	0.8 41	5.5 69	8.8 69
PFAT <i>Acc</i>	PEMD <i>Acc</i>	NLW <i>Acc</i>	BLX <i>Acc</i>
-0.1 69	0.6 66	13 34	129.5 40

Purchaser_____ \$_____

Lot 99	Tag No. 328	Twin	Sire NA180184
BWT <i>Acc</i>	MWWT <i>Acc</i>	WWT <i>Acc</i>	PWT <i>Acc</i>
0.3 62	-0.7 46	4.3 69	8.2 70
PFAT <i>Acc</i>	PEMD <i>Acc</i>	NLW <i>Acc</i>	BLX <i>Acc</i>
0.2 69	1.0* 67	15* 38	130.5 43

Purchaser_____ \$_____

Lot 100	Tag No. 399	Twin	Sire NA180116
BWT <i>Acc</i>	MWWT <i>Acc</i>	WWT <i>Acc</i>	PWT <i>Acc</i>
0.4 63	0.4 52	4.7 72	6.8 72
PFAT <i>Acc</i>	PEMD <i>Acc</i>	NLW <i>Acc</i>	BLX <i>Acc</i>
0.1 72	1.2* 70	17* 41	136.9* 47

Purchaser_____ \$_____

Lot 101	Tag No. 442	Twin	Sire NA180250
BWT <i>Acc</i>	MWWT <i>Acc</i>	WWT <i>Acc</i>	PWT <i>Acc</i>
-0.1 60	0.5 41	4.7 68	7.0 69
PFAT <i>Acc</i>	PEMD <i>Acc</i>	NLW <i>Acc</i>	BLX <i>Acc</i>
0.0 69	2.2* 66	15* 34	134.0* 41

Purchaser_____ \$_____



Lot 102

Lot 102		Tag No. 408		Triplet		Sire NA190012	
BWT	<i>Acc</i>	MWWT	<i>Acc</i>	WWT	<i>Acc</i>	PWT	<i>Acc</i>
0.4	62	0.3	49	6.6*	71	9.5	71
PFAT	<i>Acc</i>	PEMD	<i>Acc</i>	NLW	<i>Acc</i>	BLX	<i>Acc</i>
-0.6	71	0.7	68	20*	40	135.2*	45

Purchaser_____ \$_____

Lot 103		Tag No. 23		Twin		Sire TD170404	
BWT	<i>Acc</i>	MWWT	<i>Acc</i>	WWT	<i>Acc</i>	PWT	<i>Acc</i>
0.3	63	1.0	48	4.9	70	7.8	70
PFAT	<i>Acc</i>	PEMD	<i>Acc</i>	NLW	<i>Acc</i>	BLX	<i>Acc</i>
0.4*	70	0.1	68	11	39	125.9	44

Purchaser_____ \$_____

Lot 104		Tag No. 185		Twin		Sire NA180160	
BWT	<i>Acc</i>	MWWT	<i>Acc</i>	WWT	<i>Acc</i>	PWT	<i>Acc</i>
0.3	62	0.0	44	4.3	69	7.1	69
PFAT	<i>Acc</i>	PEMD	<i>Acc</i>	NLW	<i>Acc</i>	BLX	<i>Acc</i>
1.0*	69	0.6	66	9	36	119.9	41

Purchaser_____ \$_____

Lot 105		Tag No. 36		Twin		Sire NA180184	
BWT	<i>Acc</i>	MWWT	<i>Acc</i>	WWT	<i>Acc</i>	PWT	<i>Acc</i>
0.4	62	-0.4	45	6.2	69	10.5*	70
PFAT	<i>Acc</i>	PEMD	<i>Acc</i>	NLW	<i>Acc</i>	BLX	<i>Acc</i>
-1.2	68	0.2	67	13	37	126.7	43

Purchaser_____ \$_____

Lot 106		Tag No. 278		Triplet		Sire NA180020	
BWT	<i>Acc</i>	MWWT	<i>Acc</i>	WWT	<i>Acc</i>	PWT	<i>Acc</i>
0.4	62	-0.3	43	5.3	69	8.7	70
PFAT	<i>Acc</i>	PEMD	<i>Acc</i>	NLW	<i>Acc</i>	BLX	<i>Acc</i>
-0.4	70	0.9*	67	12	35	128.5	41

Purchaser_____ \$_____



Lot 107

Lot 107		Tag No. 165		Triplet		Sire NA180116	
BWT	<i>Acc</i>	MWWT	<i>Acc</i>	WWT	<i>Acc</i>	PWT	<i>Acc</i>
0.3	65	-0.2	50	6.3	71	10.2*	72
PFAT	<i>Acc</i>	PEMD	<i>Acc</i>	NLW	<i>Acc</i>	BLX	<i>Acc</i>
0.9*	71	1.0*	69	15*	39	134.3*	45

Purchaser_____ \$_____

Lot 108		Tag No. 134		Single		Sire K180060	
BWT	Acc	MWWT	Acc	WWT	Acc	PWT	Acc
0.1	65	0.4	48	5.2	71	9.3	72
PFAT	Acc	PEMD	Acc	NLW	Acc	BLX	Acc
2.3*	71	1.0*	69	13	40	128.8	45

Purchaser_____ \$_____

Lot 109		Tag No. 227		Twin		Sire NA180020	
BWT	Acc	MWWT	Acc	WWT	Acc	PWT	Acc
0.3	61	-0.1	43	6.5*	69	10.2*	69
PFAT	Acc	PEMD	Acc	NLW	Acc	BLX	Acc
-0.2	69	0.4	67	13	35	130.1	41

Purchaser_____ \$_____

Lot 110		Tag No. 424		Twin		Sire NA180184	
BWT	Acc	MWWT	Acc	WWT	Acc	PWT	Acc
0.4	60	-0.6	45	5.8	67	9.5	70
PFAT	Acc	PEMD	Acc	NLW	Acc	BLX	Acc
-0.9	70	0.9*	67	13	37	130.1	43

Purchaser_____ \$_____



CONTACT THE TEAM FROM ELDERS DUBBO

At Elders Dubbo we live your business like you do. Our team are committed to our clients and our community. Experience the difference, contact the Elders Dubbo branch today.

Scott Thrift

Stud Stock Specialist

0417 660 260

Martin Simmons

Branch Manager

0427 854 825

Chris O'Donnell

Farm Supplies Manager

0457 709 343

Elders Dubbo

p. 02 6883 1800

e. dg_dubbo@elders.com.au

Elders



SuperBorders is the brand name for Border Leicester rams that are of high genetic merit for a first cross production system. The official SuperBorder yellow ear tags allow Superborder rams to be easily identified.

To qualify as a SuperBorder a Border Leicester ram must be above the 50th percentile for the breed based on the BLX index (Border Leicester Cross Index). The 50th percentile index value is calculated based on the 15th of August LAMB-PLAN run each year. It is used to determine SuperBorder rams for that selling season. The BLX Index has been developed for production systems using Border Leicester sires crossed to Merino dams to produce first cross progeny. BLX balances maintaining mature size with significant improvements in early growth and reproduction. A higher BLX index targets animals that are more profitable in this production system.

Not all rams sold by SuperBorder members are necessarily SuperBorder quality, but are bred by committed, registered breeders striving for genetic gain. SuperBorder rams must be structurally sound and of good breed type.

The SuperBorders group is made up of a number of studs across five states who work together in meeting market requirements for objectively measured maternal genetics in the Australian Lamb Industry. SuperBorders members are industry leaders with longstanding involvement in research, trials and industry resource flocks.

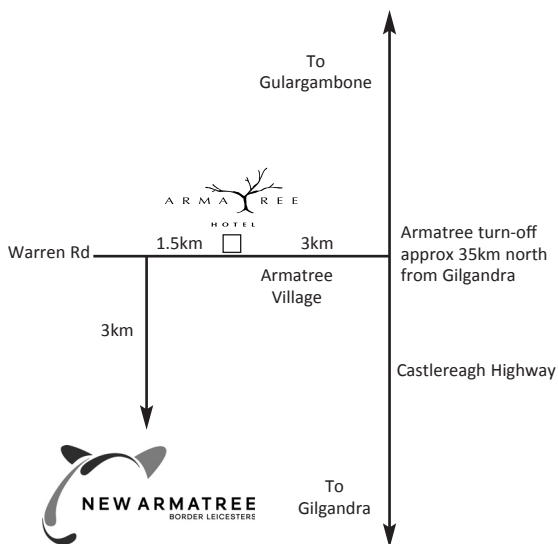
First cross lambs sired by 100% SuperBorder rams may be sold as 'Bred from SuperBorders'. Special yellow pen cards are available to identify these animals when sold in physical sales. Virtual yellow sale cards are also available for SuperBorders progeny sold on online sale platforms. Please speak with us if you would like either of these marketing materials.

Notes



Printed by Gilgandra Newspapers Pty Ltd - 02 6847 2022

'New Armatree' directions



Craig & Jenny

Peta & Jack

Thank you for supporting our sale.





For more information contact:
Craig 0428256593 or Jenny 0428422234
www.newarmatree.com.au