



NEW ARMATREE
BORDER LEICESTERS

14th on Property Ram Sale

Thursday 8th September 2022
110 Flock Rams



AuctionsPlus[®]

Australia's Livestock Marketplace



www.newarmatree.com.au



NEW ARMATREE 14th ON PROPERTY FLOCK RAM SALE

Thursday 8th September

**Offering 110
Performance Recorded
Vet Checked Rams
Flock Number 4786**

**Inspection from 11am
Complimentary lunch 12noon
Auction 1pm**

Auction will be fully interfaced with AuctionsPlus



Australia's Livestock Marketplace

**Selling Agents:
Steve Colwell, Halcroft & Bennett
Scott Thrift, Elders**

**a/c Craig & Jenny Bradley
0428 422 234 | 0428 256 593**

**Breeding Advisor:
Ash White 0411 139 654**

Welcome to our 14th on property ram sale.

We survived the COVID threat and now face a greater threat of FMD. We ask you when attending our on-property ram sale to respect our farm biosecurity and that you sign in. This information will be retained as part of our Biosecurity plan in the event of a disease incursion. We appreciate your support on this. For those that are unable to attend the sale in person we will once again be interfacing with AuctionsPlus with ram videos, photographs, ASBVs and foot scores available.

We present 110 vet checked rams that all meet the criteria to be classified as \$uperBorders. We are excited to be offering a team of rams with the average index of the catalogue being in the top 20% of all Border Leicesters which are performance recorded. You will notice in the memorandum of sires that we have introduced two outside sires which we purchased in 2020. We are pleased with the way these sires have performed and what it means for the rams you will be purchasing on sale day.

One of the key enhancements that you will notice in the catalogue is the replacement of Number of Lambs Weaned (NLW) with Weaning Rate (WR). You will find more detail in the catalogue about this update. This has meant the percentiles for the BLX index have changed as well. It will be important that you re-benchmark your rams using the available percentiles.

At NA we have always taken great care with our data quality. This year it has been recognised with the roll out of the Data Quality Score from Sheep Genetics. We have been rated as a 5-star flock for data quality, giving you confidence with your ram purchasing decisions.

This year we have included foot scores in our catalogue. Both front and back feet are scored. You can find more detail on the scoring guide included in the catalogue. Rams catalogued will not have a foot score greater than 2. In order to be used in NA as a stud ram, they must be a score 1.

We continue to breed productive rams that align with the needs of commercial producers. Our breeding objectives ensure that we are focusing on traits that are important to your business both now and into the future.

Check out newarmatree.com.au for further detail on NA.

Jenny, Craig and Jack

Please bring this catalogue with you on sale day.



NEW ARMATREE
BORDER LEICESTERS

'New Armatree' Health Record

Brucellosis Flock Accreditation No.: #76395

Expiry Date: 30th September, 2022

Vaccinated with 6 in 1 at marking and weaning

Last vaccination: 29th July, 2022

Shorn: 5th June, 2022

Drenched: 10th June, 2022

Worm egg count on 17th August, 2022

112 strongyles

We recommend that you quarantine drench your rams when you get them home, according to your drench resistance and rotation program.

No toes have been trimmed on our sale rams.

All sale rams are toe scored -
see explanation in this catalogue.

Rams are presented in pens for sale
with no straw.

All Rams Vet inspected and checked:
Tuesday, 6th September, 2022
by Dr Nadine Allan, Gilgandra Veterinary Clinic

Please Note

New Armatree Border Leicesters retains
semen rights for all rams sold at this sale



NEW ARMATREE
BORDER LEICESTERS

Memorandum of Sires used at 'New Armatree' in the 2021 Breeding Season

- **New Armatree 2018/0116 (G419) Black disks**
Sire: New Armatree 2016/0093 (F9467)
- **New Armatree 2018/0184 (G1753) Blue disks**
Sire: New Armatree 2015/0070 (F8919)
- **New Armatree 2019/0012 (G1257) Red disks**
Sire: New Armatree 2016/0324 (G9458)
- **New Armatree 2020/0111 (G2446) Orange disks**
Sire: Two Dot Boomer 2017/0404 (G261)
- **New Armatree 2019/0245 (G2448) Black disks**
Sire: New Armatree 2018/0116 (G419)
- **New Armatree 2019/0415 (G2449) Black disks**
Sire: New Armatree 2018/0116 (G419)
- **New Armatree 2020/0145 (G2456) Purple disks**
Sire: Womboota 2015/0021 (F8962)
- **New Armatree 2020/0505 (G2455) Green disks**
Sire: New Armatree 2018/0283 (G1750)
- **New Armatree 2019/0475 (G2447) Green disks**
Sire: Gleneith 2016/0329 (F9166)
- **Inverbrackie 2019/0304 (G1978) Yellow disks**
Sire: Inverbrackie 2017/0243 (F9494)
- **Inverbrackie 2019/4707 (G1979) Yellow disks**
Sire: Inverbrackie 2018/0178 (G357)

Sale Catalogue Averages and Trends

To assist you with your selection, we have included the following table which shows the catalogue averages for 2021 and 2022, enabling you to monitor the genetic trends of the sale rams we present each year.

Catalogue	Bwt	Mwwt	Pwt	Pfat	Pemd	WR	BLX
Average 2022	0.2	0.2	8.2	0.6	1.3	0.10	129.6
Average 2021	0.3	-0.3	8.1	0.0	0.9	0.05	120.6

The 2022 SuperBorder cut off BLX Index figure is 115.7. All rams catalogued are above breed average and are therefore \$SuperBorder\$. These rams will have a yellow SuperBorder button behind their lot number tag.

Those ASBVs shaded indicate that the ram is in the **top 20%** of the breed for that particular trait. If you would like to discuss these ASBVs further, please reach out to the team.

At the back of the catalogue, you will find a **Percentile Report**. On this report are a range of trait figures from the top of the breed to the bottom of the breed. The 50-percentile band is close to the average for the breed. Use this report to check where animals fit within the breed for particular traits and BLX index.

The BLX Index

This is a **Border Leicester Crossing Index** and has been designed by LAMBPLAN to better reflect the desired traits for first cross ewe production. Within the **BLX Index** there is more emphasis placed on the maternal traits such as maternal weaning weight and Weaning Rate (WR) as well as early growth while capping adult ewe weights. The BLX Index can not and should not be compared to other indexes used within the industry that you might see in other catalogues. We report the BLX index as this most accurately reflects our clients production systems.



Understanding the Traits in the Catalogue (ASBVs)

All Australian Sheep Breeding Values (ASBVs) used in this catalogue are based on the Sheep Genetics LAMBPLAN Maternal analysis from 15th August, 2022.



Abbreviation	Trait	Units	Description
BWT	Birth weight	kg	Genetic difference in liveweight at birth of a sires progeny
MWWT	Maternal Weaning weight	kg	Genetics difference in a sires female progeny's ability to provide a good maternal environment
PWT	Post weaning weight	kg	Genetic difference in live weight at approximately 9 months of age of a sires progeny
PFAT	Post weaning fat depth	mm	Genetic difference in fat depth at 9 months of age of a sires progeny
PEMD	Post weaning eye muscle depth	mm	Genetic difference in eye muscle depth at the loin at 9 months of age of a sires progeny
WR	Weaning rate	Lambs per ewe joined	Estimates the genetic difference between female progeny of a sire for the number of lambs present at weaning
BLX	Border Leicester Crossing Index		Indicates the relative value of an animal based on its suitability for first cross ewe and wether production
Acc	Accuracies	%	Are a reflection on the amount and quality of information available used to calculate ASBVs for each animal. Accuracies are important but are more relevant to people purchasing stud rams.

For more information on individual ASBVs and Indexes please visit www.genetics.mla.com.au

Please remember that it is the average of your ram team that is more important than the absolute values for each individual ram.

Selecting rams with suitable ASBVs for individual traits (according to your breeding objectives), may be better than selecting rams with a high BLX index. The important thing to remember is that your new rams should have a better average than your existing ram team. If this is true, then your ram team is improving year on year.

Weaning Rate (WR)

Sheep Genetics have introduced a new trait that measures reproductive performance called Weaning Rate. Weaning Rate replaces Number of Lambs Weaned (NLW). Weaning Rate measures the number of additional lambs weaned per ewe joined.

Weaning Rate combines the ewe performance in conception, litter size and ewe rearing ability. It has replaced NLW in the Index, and as a result of this and other major enhancements within the analysis, breeding values will have changed. It is important to re-benchmark sires using the most recent Percentile Reports.

Data Quality Score

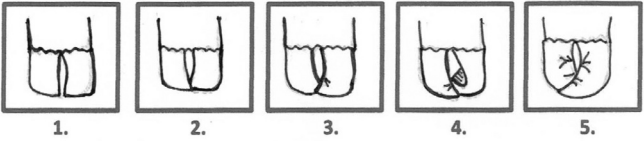
Data is the cornerstone of Sheep Genetics' evaluations. Optimal data quality is vital in enhancing the reliability of ASBVs to make accurate selection decisions and therefore maximising genetic gain.

The Data Quality Score (DQS) describes the overall quality of a flock's data. It comprises measures of data quality, quantity, structure and timeliness. It was introduced to help studs improve their data capture and reporting and therefore improve the accuracy of their ASBVs. It also gives ram buyers confidence when purchasing from studs with a high DQS. The Sheep Genetics DQS system uses a 1–5-star rating system.

New Armatree has a Data Quality Score of 5 Stars. You can be sure that we consider Data Quality to be of the highest importance to our business.



New Armatree Foot Scoring Guide



1. Ideal – Short and sharp – this is NA’s objective on 4 feet for every sheep bred.

2. Acceptable for sale catalogue and commercial rams. A slightly longer toe with weight distributed evenly.

3. Toe is longer than illustrated in 2, weight is even but possibly will need trimming with age.

*NB in 1,2 and 3 weight is born square over the claws, so structurally strong but with varying degrees of curl in the toe.

4. Uneven claw set, larger amount of claw separation, only acceptable for industry use with trimming.

Weight not born squarely on both claws so foot starts to deform eg turns in or out, rolls or clubby.

5. Uneven claw set and foot is distorted because of uneven bearing of weight and toes subsequently are distorted – these sheep are culls.

Additional information

Foot scoring at new Armatree occurs twice before being offered for sale.

Rams listed in the annual sale catalogue must be either a 1 or 2.

During a ram’s life time, feet care and toe trimming may be required to maintain performance.

Catalogue Foot Scoring Guide

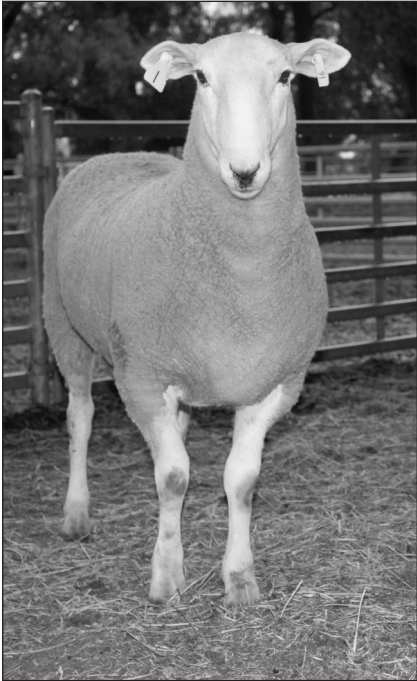
In the catalogue you will notice within the table of each lot a foot score.

F = Front toe and B= Back toe

These scores relate to the foot scoring guide presented above.

Lot 1		Tag No. 91		Single		Sire NA190012	
BWT	<i>Acc</i>	MWWT	<i>Acc</i>	PWT	<i>Acc</i>	WR	<i>Acc</i>
0.3	67	-0.8	56	10.7	69	0.03	51
PFAT	<i>Acc</i>	PEMD	<i>Acc</i>	Foot Score F/B		BLX	<i>Acc</i>
0.1	69	0.8	67	1 / 1		119.8	52

Purchaser _____ \$ _____



Lot 1

Lot 2		Tag No. 441		Twin		Sire NA190012	
BWT	<i>Acc</i>	MWWT	<i>Acc</i>	PWT	<i>Acc</i>	WR	<i>Acc</i>
0.3	64	0.0	50	9.9	69	0.08	45
PFAT	<i>Acc</i>	PEMD	<i>Acc</i>	Foot Score F/B		BLX	<i>Acc</i>
0.2	69	1.3	67	2 / 1		126.6	48

Purchaser _____ \$ _____

Lot 3		Tag No. 87		Triplet		Sire N190012	
BWT	<i>Acc</i>	MWWT	<i>Acc</i>	PWT	<i>Acc</i>	WR	<i>Acc</i>
0.3	63	0.9	52	5.9	69	0.08	44
PFAT	<i>Acc</i>	PEMD	<i>Acc</i>	Foot Score F/B		BLX	<i>Acc</i>
-1.1	65	0.5	63	1 / 1		119.2	47

Purchaser _____ \$ _____

Lot 4		Tag No. 333		Twin		Sire NA190475	
BWT	<i>Acc</i>	MWWT	<i>Acc</i>	PWT	<i>Acc</i>	WR	<i>Acc</i>
-0.1	60	0.5	49	5.9	66	0.01	46
PFAT	<i>Acc</i>	PEMD	<i>Acc</i>	Foot Score F/B		BLX	<i>Acc</i>
0.9	63	1.5	62	1 / 2		121.3	48

Purchaser _____ \$ _____

Lot 5		Tag No. 403		Triplet		Sire NA200505	
BWT	<i>Acc</i>	MWWT	<i>Acc</i>	PWT	<i>Acc</i>	WR	<i>Acc</i>
0.1	63	0.9	53	8.1	65	0.09	49
PFAT	<i>Acc</i>	PEMD	<i>Acc</i>	Foot Score F/B		BLX	<i>Acc</i>
-0.8	65	-0.2	63	1 / 1		125.9	49

Purchaser _____ \$ _____

Lot 6		Tag No.323		Triplet		Sire NA180116	
BWT	<i>Acc</i>	MWWT	<i>Acc</i>	PWT	<i>Acc</i>	WR	<i>Acc</i>
0.3	65	-1.2	57	9.5	70	0.11	50
PFAT	<i>Acc</i>	PEMD	<i>Acc</i>	Foot Score F/B		BLX	<i>Acc</i>
-0.8	70	1.5	69	1 / 2		128.4	52

Purchaser _____ \$ _____

Lot 7		Tag No.320		Triplet		Sire NA190012	
BWT	<i>Acc</i>	MWWT	<i>Acc</i>	PWT	<i>Acc</i>	WR	<i>Acc</i>
0.2	63	-0.1	51	7.8	69	0.1	44
PFAT	<i>Acc</i>	PEMD	<i>Acc</i>	Foot Score F/B		BLX	<i>Acc</i>
-0.7	69	0.9	67	1 / 1		127.2	48

Purchaser _____ \$ _____

Lot 8		Tag No. 317		Triplet		Sire NA190012	
BWT	<i>Acc</i>	MWWT	<i>Acc</i>	PWT	<i>Acc</i>	WR	<i>Acc</i>
0.3	65	0.6	52	10.0	71	0.13	43
PFAT	<i>Acc</i>	PEMD	<i>Acc</i>	Foot Score F/B		BLX	<i>Acc</i>
0.3	71	-0.2	69	1 / 1		130.2	48

Purchaser _____ \$ _____

Lot 9		Tag No. 297		Twin		Sire NA200415	
BWT	<i>Acc</i>	MWWT	<i>Acc</i>	PWT	<i>Acc</i>	WR	<i>Acc</i>
0.3	60	0.2	50	9.5	66	0.13	46
PFAT	<i>Acc</i>	PEMD	<i>Acc</i>	Foot Score F/B		BLX	<i>Acc</i>
0.4	66	0.8	63	1 / 1		134.3	48

Purchaser _____ \$ _____

Lot 10		Tag No. 76		Twin		Sire In190304	
BWT	<i>Acc</i>	MWWT	<i>Acc</i>	PWT	<i>Acc</i>	WR	<i>Acc</i>
0.3	65	1.0	55	11.2	67	0.15	51
PFAT	<i>Acc</i>	PEMD	<i>Acc</i>	Foot Score F/B		BLX	<i>Acc</i>
1.3	67	1.5	64	1 / 2		151.5	51

Purchaser _____ \$ _____



Lot 10

Lot 11		Tag No. 255		Twin		Sire NA200505	
BWT	<i>Acc</i>	MWWT	<i>Acc</i>	PWT	<i>Acc</i>	WR	<i>Acc</i>
-0.1	64	0.6	53	9.1	66	0.09	50
PFAT	<i>Acc</i>	PEMD	<i>Acc</i>	Foot Score F/B		BLX	<i>Acc</i>
0.4	66	2.5	63	1 / 2		139.8	50

Purchaser _____ \$ _____

Lot 12		Tag No. 456		Twin		Sire IN190304	
BWT	<i>Acc</i>	MWWT	<i>Acc</i>	PWT	<i>Acc</i>	WR	<i>Acc</i>
0.3	64	-0.1	55	8.5	67	0.13	47
PFAT	<i>Acc</i>	PEMD	<i>Acc</i>	Foot Score F/B		BLX	<i>Acc</i>
0.8	67	1.2	65	1 / 1		134.3	49

Purchaser _____ \$ _____



Lot 12

Lot 13		Tag No. 79		Twin		Sire NA190111	
BWT	<i>Acc</i>	MWWT	<i>Acc</i>	PWT	<i>Acc</i>	WR	<i>Acc</i>
0.5	61	0.7	50	10.9	67	0.04	43
PFAT	<i>Acc</i>	PEMD	<i>Acc</i>	Foot Score F/B		BLX	<i>Acc</i>
1.1	67	1.2	64	1 / 1		130.3	46

Purchaser _____ \$ _____

Lot 14		Tag No. 385		Twin		Sire IN194707	
BWT	<i>Acc</i>	MWWT	<i>Acc</i>	PWT	<i>Acc</i>	WR	<i>Acc</i>
0.4	61	0.1	48	8.2	68	0.08	42
PFAT	<i>Acc</i>	PEMD	<i>Acc</i>	Foot Score F/B		BLX	<i>Acc</i>
2.2	68	2.2	65	1 / 1		132.3	46

Purchaser _____ \$ _____

Lot 15		Tag No. 237		Twin		Sire NA200505	
BWT	<i>Acc</i>	MWWT	<i>Acc</i>	PWT	<i>Acc</i>	WR	<i>Acc</i>
0.0	65	1.2	57	10.2	68	0.09	51
PFAT	<i>Acc</i>	PEMD	<i>Acc</i>	Foot Score F/B		BLX	<i>Acc</i>
-0.6	68	1.5	66	1 / 1		140.5	52

Purchaser _____ \$ _____

Lot 16		Tag No. 97		Twin		Sire NA190111	
BWT	<i>Acc</i>	MWWT	<i>Acc</i>	PWT	<i>Acc</i>	WR	<i>Acc</i>
0.3	61	1.4	53	9.6	67	0.04	46
PFAT	<i>Acc</i>	PEMD	<i>Acc</i>	Foot Score F/B		BLX	<i>Acc</i>
2.4	67	1.4	64	1 / 1		130.4	48

Purchaser _____ \$ _____



Lot 16

ANIMAL HEALTH & NUTRITION CONSULTING

Proactive Livestock Production

AHN Consulting blends veterinary science, ruminant nutrition and farm management to deliver services to livestock producers.

Based in Coonamble, servicing everywhere!

- Independent & practical advice
- Consulting packages to suit your enterprise
- Parasite management plans
- Disease investigations
- Brucellosis testing & accreditation
- Worm egg counts
- Regular newsletters

Find out more at

www.ahnconsulting.com.au



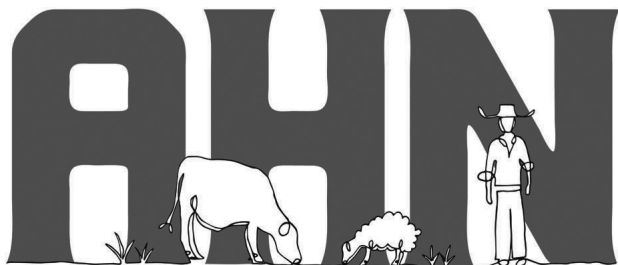
SCAN ME

Dr Jillian Kelly

Veterinarian & Ruminant Nutritionist

0408331166

info@ahnconsulting.com.au



Lot 17		Tag No. 350		Twin		Sire NA200505	
BWT	<i>Acc</i>	MWWT	<i>Acc</i>	PWT	<i>Acc</i>	WR	<i>Acc</i>
0.1	61	0.7	49	9.6	67	0.09	46
PFAT	<i>Acc</i>	PEMD	<i>Acc</i>	Foot Score F/B		BLX	<i>Acc</i>
-0.1	68	1.7	65	1 / 2		135.3	48

Purchaser _____ \$ _____

Lot 18		Tag No. 256		Twin		Sire NA200505	
BWT	<i>Acc</i>	MWWT	<i>Acc</i>	PWT	<i>Acc</i>	WR	<i>Acc</i>
0.1	65	1.7	54	10.8	66	0.07	51
PFAT	<i>Acc</i>	PEMD	<i>Acc</i>	Foot Score F/B		BLX	<i>Acc</i>
0.5	66	2.0	64	1 / 2		142.5	51

Purchaser _____ \$ _____



Lot 18

Lot 19		Tag No. 75		Twin		Sire NA200505	
BWT	Acc	MWWT	Acc	PWT	Acc	WR	Acc
0.0	61	0.4	50	7.3	67	0.06	45
PFAT	Acc	PEMD	Acc	Foot Score F/B		BLX	Acc
-0.4	67	1.1	65	1 / 2		128.7	47

Purchaser _____ \$ _____

Lot 20		Tag No. 67		Twin		Sire IN194707	
BWT	Acc	MWWT	Acc	PWT	Acc	WR	Acc
0.3	62	1.2	49	10.2	68	0.08	44
PFAT	Acc	PEMD	Acc	Foot Score F/B		BLX	Acc
1.8	68	1.2	66	1 / 1		135.6	47

Purchaser _____ \$ _____

Lot 21		Tag No. 140		Twin		Sire NA200415	
BWT	Acc	MWWT	Acc	PWT	Acc	WR	Acc
0.0	61	0.6	51	9.0	67	0.07	48
PFAT	Acc	PEMD	Acc	Foot Score F/B		BLX	Acc
1.5	67	1.8	65	1 / 1		133.7	49

Purchaser _____ \$ _____

Lot 22		Tag No. 426		Twin		Sire IN190304	
BWT	Acc	MWWT	Acc	PWT	Acc	WR	Acc
0.3	63	1.0	53	10.8	66	0.06	47
PFAT	Acc	PEMD	Acc	Foot Score F/B		BLX	Acc
-0.1	66	1.2	64	1 / 2		137.7	48

Purchaser _____ \$ _____

Lot 23		Tag No. 26		Single		Sire NA200415	
BWT	Acc	MWWT	Acc	PWT	Acc	WR	Acc
0.3	64	-0.6	54	12.5	66	0.06	52
PFAT	Acc	PEMD	Acc	Foot Score F/B		BLX	Acc
-0.1	66	0.7	63	1 / 1		131.2	51

Purchaser _____ \$ _____



Lot 23

Lot 24		Tag No. 436		Twin		Sire NA190475	
BWT	Acc	MWWT	Acc	PWT	Acc	WR	Acc
0.1	65	1.4	53	10.4	67	-0.04	49
PFAT	Acc	PEMD	Acc	Foot Score F/B		BLX	Acc
0.9	68	2.0	65	2 / 2		128.3	50

Purchaser _____ \$ _____

Lot 25		Tag No. 178		Twin		Sire IN194707	
BWT	Acc	MWWT	Acc	PWT	Acc	WR	Acc
0.2	66	1.1	54	7.4	68	0.19	48
PFAT	Acc	PEMD	Acc	Foot Score F/B		BLX	Acc
1.4	68	2.0	66	1 / 2		149.3	50

Purchaser _____ \$ _____



Lot 25

Lot 26		Tag No. 106		Twin		Sire IN194707	
BWT	<i>Acc</i>	MWWT	<i>Acc</i>	PWT	<i>Acc</i>	WR	<i>Acc</i>
0.3	61	0.4	49	8.8	67	0.07	44
PFAT	<i>Acc</i>	PEMD	<i>Acc</i>	Foot Score F/B		BLX	<i>Acc</i>
1.8	63	1.4	62	1 / 2		131.1	46

Purchaser _____ \$ _____

Lot 27		Tag No. 66		Twin		Sire IN194707	
BWT	<i>Acc</i>	MWWT	<i>Acc</i>	PWT	<i>Acc</i>	WR	<i>Acc</i>
0.3	61	1.2	49	10.3	67	0.08	44
PFAT	<i>Acc</i>	PEMD	<i>Acc</i>	Foot Score F/B		BLX	<i>Acc</i>
1.2	64	1.1	63	1 / 2		135.6	47

Purchaser _____ \$ _____



Lot 27

Lot 28		Tag No. 22		Twin		Sire NA190012	
BWT	Acc	MWWT	Acc	PWT	Acc	WR	Acc
0.4	66	0.2	54	9.1	69	0.1	46
PFAT	Acc	PEMD	Acc	Foot Score F/B		BLX	Acc
-0.5	69	1.0	67	1 / 1		129.5	49

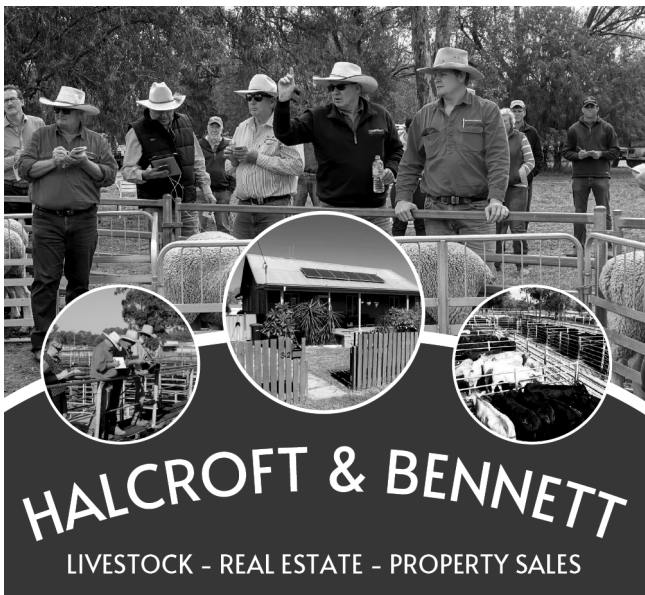
Purchaser _____ \$ _____

Lot 29		Tag No. 321		Triplet		Sire NA190012	
BWT	Acc	MWWT	Acc	PWT	Acc	WR	Acc
0.3	62	0.0	51	8.9	68	0.09	44
PFAT	Acc	PEMD	Acc	Foot Score F/B		BLX	Acc
-0.9	64	0.7	63	1 / 1		127.7	47

Purchaser _____ \$ _____

Lot 30		Tag No. 653		Single		Sire NA200505	
BWT	Acc	MWWT	Acc	PWT	Acc	WR	Acc
0.2	64	0.1	52	7.4	69	0.06	46
PFAT	Acc	PEMD	Acc	Foot Score F/B		BLX	Acc
-0.3	68	1.7	66	1 / 1		127.7	49

Purchaser _____ \$ _____



HALCROFT & BENNETT

LIVESTOCK - REAL ESTATE - PROPERTY SALES

LICENSED STOCK & STATION, REAL ESTATE AGENT

*For all your livestock, property and
real estate needs*

77 Castlereagh Street, PO Box 44
COONAMBLE NSW 2829

PH: 02 6822 1444 | FAX: 02 6822 2388

E: office@halcroftandbennett.net.au

W: www.halcroftandbennett.com.au

CONTACTS:

David Thompson

☎ 0428 214 465

✉ livestock@halcroftandbennett.net.au

Fiona Foodey

☎ 0487 221 100

✉ realestate@halcroftandbennett.net.au

Steven Colwell

☎ 0428 480 117

✉ gular@halcroftandbennett.net.au

Ulrich Eins

☎ 0428 916 066

✉ ulrich@halcroftandbennett.net.au

Lot 31		Tag No. 476		Twin		Sire NA190475	
BWT	<i>Acc</i>	MWWT	<i>Acc</i>	PWT	<i>Acc</i>	WR	<i>Acc</i>
0.1	64	1.1	53	7.6	67	0.02	46
PFAT	<i>Acc</i>	PEMD	<i>Acc</i>	Foot Score F/B		BLX	<i>Acc</i>
0.5	67	1.5	65	1 / 1		127.9	48

Purchaser _____ \$ _____

Lot 32		Tag No. 332		Twin		Sire NA190475	
BWT	<i>Acc</i>	MWWT	<i>Acc</i>	PWT	<i>Acc</i>	WR	<i>Acc</i>
0.0	61	0.6	49	6.8	67	0.01	46
PFAT	<i>Acc</i>	PEMD	<i>Acc</i>	Foot Score F/B		BLX	<i>Acc</i>
0.9	67	1.5	65	1 / 1		122.4	48

Purchaser _____ \$ _____

Lot 33		Tag No. 490		Twin		Sire NA180116	
BWT	<i>Acc</i>	MWWT	<i>Acc</i>	PWT	<i>Acc</i>	WR	<i>Acc</i>
0.1	66	-1.2	57	5.0	69	0.07	48
PFAT	<i>Acc</i>	PEMD	<i>Acc</i>	Foot Score F/B		BLX	<i>Acc</i>
1.3	69	3.1	67	1 / 2		126.7	51

Purchaser _____ \$ _____

Lot 34		Tag No. 581		Triplet		Sire NA190245	
BWT	<i>Acc</i>	MWWT	<i>Acc</i>	PWT	<i>Acc</i>	WR	<i>Acc</i>
0.1	67	0.9	59	7.3	70	0.16	52
PFAT	<i>Acc</i>	PEMD	<i>Acc</i>	Foot Score F/B		BLX	<i>Acc</i>
-0.1	69	1.1	67	1 / 1		132.7	53

Purchaser _____ \$ _____

Lot 35		Tag No. 607		Single		Sire NA180116	
BWT	<i>Acc</i>	MWWT	<i>Acc</i>	PWT	<i>Acc</i>	WR	<i>Acc</i>
0.3	69	-0.7	60	9.8	70	0.05	53
PFAT	<i>Acc</i>	PEMD	<i>Acc</i>	Foot Score F/B		BLX	<i>Acc</i>
-0.8	70	1.3	68	1 / 2		123.1	54

Purchaser _____ \$ _____

Lot 36		Tag No. 121		Single		Sire NA190245	
BWT	<i>Acc</i>	MWWT	<i>Acc</i>	PWT	<i>Acc</i>	WR	<i>Acc</i>
0.1	65	-0.4	56	6.6	67	0.04	52
PFAT	<i>Acc</i>	PEMD	<i>Acc</i>	Foot Score F/B		BLX	<i>Acc</i>
0.0	67	2.0	64	1 / 1		119.8	52

Purchaser _____ \$ _____

Lot 37		Tag No. 152		Twin		Sire NA190111	
BWT	<i>Acc</i>	MWWT	<i>Acc</i>	PWT	<i>Acc</i>	WR	<i>Acc</i>
0.1	60	0.6	49	6.3	67	0.03	40
PFAT	<i>Acc</i>	PEMD	<i>Acc</i>	Foot Score F/B		BLX	<i>Acc</i>
1.1	66	1.6	64	1 / 1		123.5	44

Purchaser _____ \$ _____

Lot 38		Tag No. 443		Twin		Sire IN194707	
BWT	<i>Acc</i>	MWWT	<i>Acc</i>	PWT	<i>Acc</i>	WR	<i>Acc</i>
0.2	66	-0.7	55	4.9	68	0.08	50
PFAT	<i>Acc</i>	PEMD	<i>Acc</i>	Foot Score F/B		BLX	<i>Acc</i>
3.1	68	2.6	66	1 / 1		126.7	51

Purchaser _____ \$ _____

Lot 39		Tag No. 492		Twin		Sire IN194707	
BWT	<i>Acc</i>	MWWT	<i>Acc</i>	PWT	<i>Acc</i>	WR	<i>Acc</i>
0.2	64	0.3	53	7.7	68	0.06	44
PFAT	<i>Acc</i>	PEMD	<i>Acc</i>	Foot Score F/B		BLX	<i>Acc</i>
1.8	68	1.1	66	1 / 1		124.7	47

Purchaser _____ \$ _____

Lot 40		Tag No. 63		Triplet		Sire NA190012	
BWT	<i>Acc</i>	MWWT	<i>Acc</i>	PWT	<i>Acc</i>	WR	<i>Acc</i>
0.1	63	-0.8	50	6.6	69	0.11	43
PFAT	<i>Acc</i>	PEMD	<i>Acc</i>	Foot Score F/B		BLX	<i>Acc</i>
0.0	69	1.5	67	1 / 2		125.5	47

Purchaser _____ \$ _____

Lot 41		Tag No. 591		Triplet		Sire NA190245	
BWT	<i>Acc</i>	MWWT	<i>Acc</i>	PWT	<i>Acc</i>	WR	<i>Acc</i>
0.3	65	-0.9	55	8.6	67	0.19	50
PFAT	<i>Acc</i>	PEMD	<i>Acc</i>	Foot Score F/B		BLX	<i>Acc</i>
0.2	67	0.1	64	1 / 2		125.9	51

Purchaser _____ \$ _____

Lot 42		Tag No. 195		Triplet		Sire NA190111	
BWT	<i>Acc</i>	MWWT	<i>Acc</i>	PWT	<i>Acc</i>	WR	<i>Acc</i>
0.3	61	0.4	51	7.6	68	0.02	45
PFAT	<i>Acc</i>	PEMD	<i>Acc</i>	Foot Score F/B		BLX	<i>Acc</i>
0.6	67	1.2	65	1 / 1		117.9	48

Purchaser _____ \$ _____

Lot 43		Tag No. 41		Twin		Sire NA190475	
BWT	<i>Acc</i>	MWWT	<i>Acc</i>	PWT	<i>Acc</i>	WR	<i>Acc</i>
-0.1	67	0.5	55	8.7	68	0.02	53
PFAT	<i>Acc</i>	PEMD	<i>Acc</i>	Foot Score F/B		BLX	<i>Acc</i>
1.2	68	1.6	66	1 / 1		124.0	53

Purchaser _____ \$ _____

Lot 44		Tag No. 501		Twin		Sire NA180116	
BWT	<i>Acc</i>	MWWT	<i>Acc</i>	PWT	<i>Acc</i>	WR	<i>Acc</i>
0.2	67	-0.2	58	7.2	69	0.08	49
PFAT	<i>Acc</i>	PEMD	<i>Acc</i>	Foot Score F/B		BLX	<i>Acc</i>
-1.0	69	1.3	67	1 / 1		123.3	51

Purchaser _____ \$ _____

Lot 45		Tag No. 672		Single		Sire NA190245	
BWT	<i>Acc</i>	MWWT	<i>Acc</i>	PWT	<i>Acc</i>	WR	<i>Acc</i>
0.2	65	0.0	53	6.1	67	0..13	49
PFAT	<i>Acc</i>	PEMD	<i>Acc</i>	Foot Score F/B		BLX	<i>Acc</i>
0.5	67	0.9	64	1 / 2		125.4	50

Purchaser _____ \$ _____

Lot 46		Tag No. 164		Triplet		Sire NA200415	
BWT	<i>Acc</i>	MWWT	<i>Acc</i>	PWT	<i>Acc</i>	WR	<i>Acc</i>
0.3	60	-0.3	51	9.1	67	0.12	47
PFAT	<i>Acc</i>	PEMD	<i>Acc</i>	Foot Score F/B		BLX	<i>Acc</i>
1.0	66	0.8	64	1 / 1		132.5	49

Purchaser _____ \$ _____

Lot 47		Tag No. 368		Twin		Sire IN190304	
BWT	<i>Acc</i>	MWWT	<i>Acc</i>	PWT	<i>Acc</i>	WR	<i>Acc</i>
0.2	61	-0.1	50	8.4	67	0.15	45
PFAT	<i>Acc</i>	PEMD	<i>Acc</i>	Foot Score F/B		BLX	<i>Acc</i>
0.7	67	0.5	65	1 / 2		132.6	47

Purchaser _____ \$ _____

Lot 48		Tag No. 455		Twin		Sire IN190304	
BWT	<i>Acc</i>	MWWT	<i>Acc</i>	PWT	<i>Acc</i>	WR	<i>Acc</i>
0.1	64	0.4	55	6.0	68	0.16	47
PFAT	<i>Acc</i>	PEMD	<i>Acc</i>	Foot Score F/B		BLX	<i>Acc</i>
1.6	67	1.6	65	1 / 2		138.2	49

Purchaser _____ \$ _____

Lot 49		Tag No. 584		Twin		Sire NA190245	
BWT	<i>Acc</i>	MWWT	<i>Acc</i>	PWT	<i>Acc</i>	WR	<i>Acc</i>
0.2	65	-0.6	55	8.0	68	0.02	52
PFAT	<i>Acc</i>	PEMD	<i>Acc</i>	Foot Score F/B		BLX	<i>Acc</i>
1.3	66	2.0	65	1 / 1		123.1	52

Purchaser _____ \$ _____

Lot 50		Tag No. 377		Twin		Sire NA180116	
BWT	<i>Acc</i>	MWWT	<i>Acc</i>	PWT	<i>Acc</i>	WR	<i>Acc</i>
0.3	66	-1.7	59	9.2	71	0.08	50
PFAT	<i>Acc</i>	PEMD	<i>Acc</i>	Foot Score F/B		BLX	<i>Acc</i>
0.9	71	1.2	69	1 / 2		123.9	53

Purchaser _____ \$ _____

Lot 51		Tag No. 113		Twin		Sire NA190111	
BWT	<i>Acc</i>	MWWT	<i>Acc</i>	PWT	<i>Acc</i>	WR	<i>Acc</i>
0.0	61	0.7	50	4.7	67	0.04	44
PFAT	<i>Acc</i>	PEMD	<i>Acc</i>	Foot Score F/B		BLX	<i>Acc</i>
4.3	67	1.9	64	1 / 1		119.8	47

Purchaser _____ \$ _____

Lot 52		Tag No. 550		Triplet		Sire IN190304	
BWT	<i>Acc</i>	MWWT	<i>Acc</i>	PWT	<i>Acc</i>	WR	<i>Acc</i>
0.3	65	0.5	57	5.7	68	0.08	50
PFAT	<i>Acc</i>	PEMD	<i>Acc</i>	Foot Score F/B		BLX	<i>Acc</i>
0.2	68	0.3	66	1 / 1		118.5	51

Purchaser _____ \$ _____

Lot 53		Tag No. 308		Twin		Sire NA180116	
BWT	<i>Acc</i>	MWWT	<i>Acc</i>	PWT	<i>Acc</i>	WR	<i>Acc</i>
0.2	63	-0.6	53	8.0	69	0.05	44
PFAT	<i>Acc</i>	PEMD	<i>Acc</i>	Foot Score F/B		BLX	<i>Acc</i>
-0.4	64	1.4	63	1 / 2		120.5	48

Purchaser _____ \$ _____

Lot 54		Tag No. 144		Twin		Sire NA180116	
BWT	<i>Acc</i>	MWWT	<i>Acc</i>	PWT	<i>Acc</i>	WR	<i>Acc</i>
0.3	65	-1.1	56	9.0	70	0.1	47
PFAT	<i>Acc</i>	PEMD	<i>Acc</i>	Foot Score F/B		BLX	<i>Acc</i>
0.3	70	2.0	68	1 / 1		129.7	50

Purchaser _____ \$ _____

Lot 55		Tag No. 233		Triplet		Sire IN194707	
BWT	<i>Acc</i>	MWWT	<i>Acc</i>	PWT	<i>Acc</i>	WR	<i>Acc</i>
0.2	63	0.2	50	7.3	68	0.05	43
PFAT	<i>Acc</i>	PEMD	<i>Acc</i>	Foot Score F/B		BLX	<i>Acc</i>
1.1	69	1.3	66	1 / 1		123.1	46

Purchaser _____ \$ _____

Lot 56		Tag No. 693		Twin		Sire NA200098	
BWT	<i>Acc</i>	MWWT	<i>Acc</i>	PWT	<i>Acc</i>	WR	<i>Acc</i>
0.5	57	-0.5	42	7.2	65	0.07	36
PFAT	<i>Acc</i>	PEMD	<i>Acc</i>	Foot Score F/B		BLX	<i>Acc</i>
-0.3	64	0.9	61	1 / 1		124.3	41

Purchaser _____ \$ _____

Lot 57		Tag No. 167		Triplet		Sire NA180116	
BWT	<i>Acc</i>	MWWT	<i>Acc</i>	PWT	<i>Acc</i>	WR	<i>Acc</i>
0.2	66	-1.0	58	7.4	71	0.12	48
PFAT	<i>Acc</i>	PEMD	<i>Acc</i>	Foot Score F/B		BLX	<i>Acc</i>
1.0	71	1.5	69	1 / 2		130.0	52

Purchaser _____ \$ _____

Lot 58		Tag No. 123		Twin		Sire NA190475	
BWT	<i>Acc</i>	MWWT	<i>Acc</i>	PWT	<i>Acc</i>	WR	<i>Acc</i>
0.1	65	0.5	54	8.1	67	0.08	50
PFAT	<i>Acc</i>	PEMD	<i>Acc</i>	Foot Score F/B		BLX	<i>Acc</i>
0.6	67	1.5	64	1 / 1		134.4	51

Purchaser _____ \$ _____

Lot 59		Tag No. 663		Twin		Sire NA190475	
BWT	<i>Acc</i>	MWWT	<i>Acc</i>	PWT	<i>Acc</i>	WR	<i>Acc</i>
0.2	65	0.9	53	8.5	67	0.07	49
PFAT	<i>Acc</i>	PEMD	<i>Acc</i>	Foot Score F/B		BLX	<i>Acc</i>
0.0	67	1.4	64	1 / 1		131.4	50

Purchaser _____ \$ _____

Lot 60		Tag No. 379		Twin		Sire NA190475	
BWT	<i>Acc</i>	MWWT	<i>Acc</i>	PWT	<i>Acc</i>	WR	<i>Acc</i>
-0.1	61	0.8	49	5.6	67	0.03	45
PFAT	<i>Acc</i>	PEMD	<i>Acc</i>	Foot Score F/B		BLX	<i>Acc</i>
0.9	67	1.1	65	1 / 1		119.4	47

Purchaser _____ \$ _____

Lot 61		Tag No. 319		Triplet		Sire NA190012	
BWT	<i>Acc</i>	MWWT	<i>Acc</i>	PWT	<i>Acc</i>	WR	<i>Acc</i>
0.2	63	0.0	51	7.8	69	0.09	44
PFAT	<i>Acc</i>	PEMD	<i>Acc</i>	Foot Score F/B		BLX	<i>Acc</i>
-0.8	69	0.5	67	1 / 2		124.8	48

Purchaser _____ \$ _____

Lot 62		Tag No. 595		Triplet		Sire NA200145	
BWT	<i>Acc</i>	MWWT	<i>Acc</i>	PWT	<i>Acc</i>	WR	<i>Acc</i>
0.2	60	1.0	51	5.4	67	0.13	45
PFAT	<i>Acc</i>	PEMD	<i>Acc</i>	Foot Score F/B		BLX	<i>Acc</i>
-0.6	67	0.1	64	1 / 2		123.8	47

Purchaser _____ \$ _____

Lot 63		Tag No. 138		Twin		Sire NA190245	
BWT	<i>Acc</i>	MWWT	<i>Acc</i>	PWT	<i>Acc</i>	WR	<i>Acc</i>
0.3	67	-0.8	59	7.9	69	0.11	53
PFAT	<i>Acc</i>	PEMD	<i>Acc</i>	Foot Score F/B		BLX	<i>Acc</i>
0.5	69	1.3	66	1 / 1		124.2	54

Purchaser _____ \$ _____

Lot 64		Tag No. 625		Twin		Sire NA190012	
BWT	<i>Acc</i>	MWWT	<i>Acc</i>	PWT	<i>Acc</i>	WR	<i>Acc</i>
0.2	63	-0.8	49	6.0	68	0.1	44
PFAT	<i>Acc</i>	PEMD	<i>Acc</i>	Foot Score F/B		BLX	<i>Acc</i>
-0.5	68	1.2	66	1 / 1		120.3	47

Purchaser _____ \$ _____

Lot 65		Tag No. 624		Twin		Sire NA190012	
BWT	<i>Acc</i>	MWWT	<i>Acc</i>	PWT	<i>Acc</i>	WR	<i>Acc</i>
0.2	63	-0.8	49	7.8	68	0.1	44
PFAT	<i>Acc</i>	PEMD	<i>Acc</i>	Foot Score F/B		BLX	<i>Acc</i>
-0.6	68	1.6	66	1 / 1		125.2	47

Purchaser _____ \$ _____

Lot 66		Tag No. 511		Triplet		Sire IN194707	
BWT	<i>Acc</i>	MWWT	<i>Acc</i>	PWT	<i>Acc</i>	WR	<i>Acc</i>
0.4	65	0.5	53	5.2	67	0.09	48
PFAT	<i>Acc</i>	PEMD	<i>Acc</i>	Foot Score F/B		BLX	<i>Acc</i>
1.5	67	0.8	65	2 / 2		124.9	49

Purchaser _____ \$ _____

Lot 67		Tag No. 82		Twin		Sire IN194707	
BWT	<i>Acc</i>	MWWT	<i>Acc</i>	PWT	<i>Acc</i>	WR	<i>Acc</i>
0.2	60	0.5	48	4.4	66	0.08	42
PFAT	<i>Acc</i>	PEMD	<i>Acc</i>	Foot Score F/B		BLX	<i>Acc</i>
1.8	63	1.4	61	1 / 2		127.2	45

Purchaser _____ \$ _____

Lot 68		Tag No. 609		Twin		Sire IN194707	
BWT	<i>Acc</i>	MWWT	<i>Acc</i>	PWT	<i>Acc</i>	WR	<i>Acc</i>
0.1	66	-0.2	54	5.6	67	0.18	49
PFAT	<i>Acc</i>	PEMD	<i>Acc</i>	Foot Score F/B		BLX	<i>Acc</i>
2.2	67	2.6	65	1 / 2		145.4	50

Purchaser _____ \$ _____

Lot 69		Tag No. 376		Triplet		Sire NA200505	
BWT	<i>Acc</i>	MWWT	<i>Acc</i>	PWT	<i>Acc</i>	WR	<i>Acc</i>
0.0	62	-0.4	50	7.8	68	0.14	47
PFAT	<i>Acc</i>	PEMD	<i>Acc</i>	Foot Score F/B		BLX	<i>Acc</i>
-0.3	69	1.5	66	2 / 1		134.5	49

Purchaser _____ \$ _____

Lot 70		Tag No. 356		Twin		Sire IN194707	
BWT	<i>Acc</i>	MWWT	<i>Acc</i>	PWT	<i>Acc</i>	WR	<i>Acc</i>
0.2	62	-0.3	49	6.1	68	0.15	43
PFAT	<i>Acc</i>	PEMD	<i>Acc</i>	Foot Score F/B		BLX	<i>Acc</i>
0.8	68	0.9	66	1 / 1		130.3	46

Purchaser _____ \$ _____

Apex Contracting & Pregnancy Scanning

Pregnancy scanning ewes for

- Wet/dry
- Twinning
- Triplets
- Age splitting

James Nadin
0439 709 306

e: jnadin97@hotmail.com

Servicing central and western NSW



Lot 71		Tag No. 574		Triplet		Sire NA200505	
BWT	<i>Acc</i>	MWWT	<i>Acc</i>	PWT	<i>Acc</i>	WR	<i>Acc</i>
0.0	60	0.0	48	7.9	67	0.08	45
PFAT	<i>Acc</i>	PEMD	<i>Acc</i>	Foot Score F/B		BLX	<i>Acc</i>
-0.1	67	1.6	65	1 / 1		130.2	47

Purchaser _____ \$ _____

Lot 72		Tag No. 286		Twin		Sire IN194707	
BWT	<i>Acc</i>	MWWT	<i>Acc</i>	PWT	<i>Acc</i>	WR	<i>Acc</i>
-0.1	64	0.6	51	5.7	67	0.12	45
PFAT	<i>Acc</i>	PEMD	<i>Acc</i>	Foot Score F/B		BLX	<i>Acc</i>
3.4	67	3.0	65	1 / 2		142.1	48

Purchaser _____ \$ _____

Lot 73		Tag No. 168		Triplet		Sire NA180116	
BWT	<i>Acc</i>	MWWT	<i>Acc</i>	PWT	<i>Acc</i>	WR	<i>Acc</i>
0.3	66	-1.0	58	9.5	70	0.11	48
PFAT	<i>Acc</i>	PEMD	<i>Acc</i>	Foot Score F/B		BLX	<i>Acc</i>
0.4	67	1.7	66	1 / 2		133.0	51

Purchaser _____ \$ _____

Lot 74		Tag No. 556		Twin		Sire IN194707	
BWT	<i>Acc</i>	MWWT	<i>Acc</i>	PWT	<i>Acc</i>	WR	<i>Acc</i>
0.2	65	0.3	55	5.0	69	0.18	45
PFAT	<i>Acc</i>	PEMD	<i>Acc</i>	Foot Score F/B		BLX	<i>Acc</i>
0.8	69	1.1	66	1 / 1		132.9	49

Purchaser _____ \$ _____

Lot 75		Tag No. 244		Twin		Sire NA200415	
BWT	<i>Acc</i>	MWWT	<i>Acc</i>	PWT	<i>Acc</i>	WR	<i>Acc</i>
0.2	66	0.1	51	10.0	68	0.09	47
PFAT	<i>Acc</i>	PEMD	<i>Acc</i>	Foot Score F/B		BLX	<i>Acc</i>
0.7	68	1.6	65	1 / 2		132.9	49

Purchaser _____ \$ _____

Lot 76		Tag No. 466		Twin		Sire NA180116	
BWT	<i>Acc</i>	MWWT	<i>Acc</i>	PWT	<i>Acc</i>	WR	<i>Acc</i>
0.3	69	-1.2	61	7.0	71	0.04	54
PFAT	<i>Acc</i>	PEMD	<i>Acc</i>	Foot Score F/B		BLX	<i>Acc</i>
-0.1	69	2.1	68	1 / 2		126.9	55

Purchaser _____ \$ _____

Lot 77		Tag No. 675		Twin		Sire NA200145	
BWT	<i>Acc</i>	MWWT	<i>Acc</i>	PWT	<i>Acc</i>	WR	<i>Acc</i>
0.7	60	0.0	51	8.8	66	0.1	47
PFAT	<i>Acc</i>	PEMD	<i>Acc</i>	Foot Score F/B		BLX	<i>Acc</i>
-0.8	66	-0.8	63	1 / 1		121.2	48

Purchaser _____ \$ _____

Lot 78		Tag No.358		Twin		Sire NA190012	
BWT	<i>Acc</i>	MWWT	<i>Acc</i>	PWT	<i>Acc</i>	WR	<i>Acc</i>
0.1	63	0.8	50	7.6	69	0.09	45
PFAT	<i>Acc</i>	PEMD	<i>Acc</i>	Foot Score F/B		BLX	<i>Acc</i>
0.3	65	1.1	64	1 / 1		127.9	48

Purchaser _____ \$ _____

Lot 79		Tag No. 31		Twin		Sire NA190012	
BWT	<i>Acc</i>	MWWT	<i>Acc</i>	PWT	<i>Acc</i>	WR	<i>Acc</i>
0.3	65	0.3	53	8.8	70	0.06	45
PFAT	<i>Acc</i>	PEMD	<i>Acc</i>	Foot Score F/B		BLX	<i>Acc</i>
-0.2	70	0.2	68	1 / 1		117.2	49

Purchaser _____ \$ _____

Lot 80		Tag No. 96		Twin		Sire NA190111	
BWT	<i>Acc</i>	MWWT	<i>Acc</i>	PWT	<i>Acc</i>	WR	<i>Acc</i>
0.3	61	1.4	53	9.0	67	0.03	46
PFAT	<i>Acc</i>	PEMD	<i>Acc</i>	Foot Score F/B		BLX	<i>Acc</i>
2.2	67	1.0	64	1 / 2		127.0	48

Purchaser _____ \$ _____



Lot 80

Lot 81		Tag No. 50		Twin		Sire NA190111	
BWT	Acc	MWWT	Acc	PWT	Acc	WR	Acc
0.4	61	0.9	52	7.0	67	0.03	44
PFAT	Acc	PEMD	Acc	Foot Score F/B		BLX	Acc
0.3	67	0.6	65	1 / 2		119.9	47

Purchaser _____ \$ _____

Lot 82		Tag No.310		Twin		Sire NA190245	
BWT	Acc	MWWT	Acc	PWT	Acc	WR	Acc
0.3	65	0.0	56	7.7	68	0.11	51
PFAT	Acc	PEMD	Acc	Foot Score F/B		BLX	Acc
-0.2	67	1.2	65	1 / 1		129.0	52

Purchaser _____ \$ _____

Lot 83		Tag No. 361		Twin		Sire NA190475	
BWT	Acc	MWWT	Acc	PWT	Acc	WR	Acc
0.1	61	1.1	50	6.9	67	0.05	47
PFAT	Acc	PEMD	Acc	Foot Score F/B		BLX	Acc
-0.3	67	0.6	65	1 / 1		123.5	49

Purchaser _____ \$ _____

Lot 84		Tag No. 145		Twin		Sire NA180116	
BWT	<i>Acc</i>	MWWT	<i>Acc</i>	PWT	<i>Acc</i>	WR	<i>Acc</i>
0.3	66	-0.5	59	10.4	71	0.07	47
PFAT	<i>Acc</i>	PEMD	<i>Acc</i>	Foot Score F/B		BLX	<i>Acc</i>
-0.4	67	0.8	66	1 / 2		126.3	51

Purchaser _____ \$ _____

Lot 85		Tag No. 378		Twin		Sire NA180116	
BWT	<i>Acc</i>	MWWT	<i>Acc</i>	PWT	<i>Acc</i>	WR	<i>Acc</i>
0.3	66	-1.7	59	8.2	71	0.07	50
PFAT	<i>Acc</i>	PEMD	<i>Acc</i>	Foot Score F/B		BLX	<i>Acc</i>
0.5	71	1.8	69	1 / 2		124.0	53

Purchaser _____ \$ _____

Lot 86		Tag No. 153		Quad		Sire NA190012	
BWT	<i>Acc</i>	MWWT	<i>Acc</i>	PWT	<i>Acc</i>	WR	<i>Acc</i>
0.4	65	0.2	54	11.1	71	0.15	46
PFAT	<i>Acc</i>	PEMD	<i>Acc</i>	Foot Score F/B		BLX	<i>Acc</i>
-1.4	71	0.2	69	1 / 1		131.6	50

Purchaser _____ \$ _____

Lot 87		Tag No. 315		Twin		Sire NA190475	
BWT	<i>Acc</i>	MWWT	<i>Acc</i>	PWT	<i>Acc</i>	WR	<i>Acc</i>
0.1	61	1.1	50	9.3	68	0.05	46
PFAT	<i>Acc</i>	PEMD	<i>Acc</i>	Foot Score F/B		BLX	<i>Acc</i>
0.6	68	0.4	65	1 / 2		124.6	48

Purchaser _____ \$ _____

Lot 88		Tag No. 71		Twin		Sire NA180116	
BWT	<i>Acc</i>	MWWT	<i>Acc</i>	PWT	<i>Acc</i>	WR	<i>Acc</i>
0.3	68	-1.0	58	11.1	73	0.09	49
PFAT	<i>Acc</i>	PEMD	<i>Acc</i>	Foot Score F/B		BLX	<i>Acc</i>
0.7	73	2.5	72	1 / 1		138.9	53

Purchaser _____ \$ _____

Lot 89		Tag No. 112		Twin		Sire IN194707	
BWT	Acc	MWWT	Acc	PWT	Acc	WR	Acc
0.3	64	0.8	52	10.3	68	0.09	45
PFAT	Acc	PEMD	Acc	Foot Score F/B		BLX	Acc
0.6	67	1.8	65	1 / 2		139.7	48

Purchaser _____ \$ _____



Lot 89

Lot 90		Tag No. 163		Triplet		Sire NA200415	
BWT	Acc	MWWT	Acc	PWT	Acc	WR	Acc
0.3	60	-0.3	51	9.7	67	0.11	47
PFAT	Acc	PEMD	Acc	Foot Score F/B		BLX	Acc
1.2	66	1.1	64	1 / 1		133.8	49

Purchaser _____ \$ _____

Lot 91		Tag No. 328		Twin		Sire NA190475	
BWT	Acc	MWWT	Acc	PWT	Acc	WR	Acc
0.1	65	1.0	54	8.2	67	0.05	51
PFAT	Acc	PEMD	Acc	Foot Score F/B		BLX	Acc
0.3	67	1.3	66	1 / 1		128.5	51

Purchaser _____ \$ _____



For all your wool, livestock and property needs

Call your local AWN Wool or Livestock
Specialist today or visit awn.net

WOOL SPECIALISTS

Central & Western NSW

Brett Cooper 0407 136 129

Hunter Leeson 0448 613 330

Northern NSW

Harold Manttan 0418 253 976

John Croake 0428 977 589

LIVESTOCK SPECIALIST

Central & Western NSW

Peter Hargreaves

0409 321 001



00188-2108

Lot 92		Tag No. 293		Twin		Sire IN190304	
BWT	<i>Acc</i>	MWWT	<i>Acc</i>	PWT	<i>Acc</i>	WR	<i>Acc</i>
0.3	61	0.7	51	11.8	68	0.08	45
PFAT	<i>Acc</i>	PEMD	<i>Acc</i>	Foot Score F/B		BLX	<i>Acc</i>
0.4	68	0.0	65	1 / 1		129.8	48

Purchaser _____ \$ _____

Lot 93		Tag No. 577		Twin		Sire IN194707	
BWT	<i>Acc</i>	MWWT	<i>Acc</i>	PWT	<i>Acc</i>	WR	<i>Acc</i>
0.3	64	0.3	52	7.0	68	0.09	45
PFAT	<i>Acc</i>	PEMD	<i>Acc</i>	Foot Score F/B		BLX	<i>Acc</i>
0.7	66	1.2	65	1 / 2		128.2	48

Purchaser _____ \$ _____

Lot 94		Tag No. 61		Triplet		Sire NA190012	
BWT	<i>Acc</i>	MWWT	<i>Acc</i>	PWT	<i>Acc</i>	WR	<i>Acc</i>
0.0	62	-0.8	50	5.7	68	0.12	43
PFAT	<i>Acc</i>	PEMD	<i>Acc</i>	Foot Score F/B		BLX	<i>Acc</i>
0.2	64	1.5	63	1 / 1		125.3	47

Purchaser _____ \$ _____

Lot 95		Tag No. 562		Twin		Sire IN194707	
BWT	<i>Acc</i>	MWWT	<i>Acc</i>	PWT	<i>Acc</i>	WR	<i>Acc</i>
0.0	65	-0.2	54	5.9	67	0.09	48
PFAT	<i>Acc</i>	PEMD	<i>Acc</i>	Foot Score F/B		BLX	<i>Acc</i>
1.2	67	2.0	66	1 / 2		129.8	49

Purchaser _____ \$ _____

Lot 96		Tag No.185		Twin		Sire NA200505	
BWT	<i>Acc</i>	MWWT	<i>Acc</i>	PWT	<i>Acc</i>	WR	<i>Acc</i>
0.0	64	0.3	55	7.4	70	0.14	49
PFAT	<i>Acc</i>	PEMD	<i>Acc</i>	Foot Score F/B		BLX	<i>Acc</i>
-0.3	70	1.5	67	1 / 2		136.4	51

Purchaser _____ \$ _____



Lot 96

Lot 97		Tag No. 263		Triplet		Sire IN190304	
BWT	Acc	MWWT	Acc	PWT	Acc	WR	Acc
0.2	60	0.8	49	10.5	66	0.14	45
PFAT	Acc	PEMD	Acc	Foot Score F/B		BLX	Acc
2.5	66	1.3	64	1 / 2		138.1	47

Purchaser _____ \$ _____

Lot 98		Tag No. 38		Twin		Sire IN190304	
BWT	Acc	MWWT	Acc	PWT	Acc	WR	Acc
0.2	61	0.7	52	9.0	68	0.09	44
PFAT	Acc	PEMD	Acc	Foot Score F/B		BLX	Acc
3.4	68	1.9	65	1 / 1		136.3	47

Purchaser _____ \$ _____



GILGANDRA

**VETERINARY
CLINIC**

*Pet and Livestock
health care advice*

Nadine Allan BVSc

6847 1129

0427 471 129

2 Enterprise Drive, Gilgandra

info@gilvets.com.au

Lot 99		Tag No. 162		Triplet		Sire IN194707	
BWT	Acc	MWWT	Acc	PWT	Acc	WR	Acc
0.3	62	0.5	49	7.0	68	0.08	42
PFAT	Acc	PEMD	Acc	Foot Score F/B		BLX	Acc
0.3	68	1.1	66	1 / 1		129.3	46

Purchaser _____ \$ _____

Lot 100		Tag No. 679		Single		Sire NA200145	
BWT	Acc	MWWT	Acc	PWT	Acc	WR	Acc
0.4	61	-0.2	51	10.0	67	0.14	47
PFAT	Acc	PEMD	Acc	Foot Score F/B		BLX	Acc
0.5	66	1.7	64	1 / 2		140.0	49

Purchaser _____ \$ _____

Lot 101		Tag No. 186		Twin		Sire NA200505	
BWT	Acc	MWWT	Acc	PWT	Acc	WR	Acc
0.1	64	0.3	55	8.5	70	0.13	49
PFAT	Acc	PEMD	Acc	Foot Score F/B		BLX	Acc
-1.0	70	1.3	67	1 / 1		137.1	51

Purchaser _____ \$ _____

Lot 102		Tag No. 427		Twin		Sire IN190304	
BWT	Acc	MWWT	Acc	PWT	Acc	WR	Acc
0.2	64	0.8	54	9.4	66	0.08	49
PFAT	Acc	PEMD	Acc	Foot Score F/B		BLX	Acc
1.3	65	2.0	64	1 / 2		140.0	50

Purchaser _____ \$ _____

Lot 103		Tag No. 254		Twin		Sire NA180116	
BWT	Acc	MWWT	Acc	PWT	Acc	WR	Acc
0.4	65	-1.7	55	10.7	70	0.1	46
PFAT	Acc	PEMD	Acc	Foot Score F/B		BLX	Acc
0.5	70	1.3	69	1 / 2		130.8	50

Purchaser _____ \$ _____

Lot 104		Tag No. 496		Triplet		Sire NA190012	
BWT	<i>Acc</i>	MWWT	<i>Acc</i>	PWT	<i>Acc</i>	WR	<i>Acc</i>
0.4	63	0.1	50	8.3	69	0.08	44
PFAT	<i>Acc</i>	PEMD	<i>Acc</i>	Foot Score F/B		BLX	<i>Acc</i>
-0.4	69	1.2	67	1 / 1		128.7	47

Purchaser _____ \$ _____

Lot 105		Tag No. 508		Twin		Sire IN194707	
BWT	<i>Acc</i>	MWWT	<i>Acc</i>	PWT	<i>Acc</i>	WR	<i>Acc</i>
0.6	64	0.0	51	10.4	67	0.09	44
PFAT	<i>Acc</i>	PEMD	<i>Acc</i>	Foot Score F/B		BLX	<i>Acc</i>
-0.1	68	0.5	65	1 / 2		130.7	47

Purchaser _____ \$ _____

Lot 106		Tag No. 2		Twin		Sire IN194707	
BWT	<i>Acc</i>	MWWT	<i>Acc</i>	PWT	<i>Acc</i>	WR	<i>Acc</i>
0.4	62	0.7	50	6.6	68	0.12	42
PFAT	<i>Acc</i>	PEMD	<i>Acc</i>	Foot Score F/B		BLX	<i>Acc</i>
0.7	68	0.1	66	1 / 1		128.1	46

Purchaser _____ \$ _____

Lot 107		Tag No. 393		Twin		Sire IN194707	
BWT	<i>Acc</i>	MWWT	<i>Acc</i>	PWT	<i>Acc</i>	WR	<i>Acc</i>
0.5	65	0.9	54	9.0	67	0.08	48
PFAT	<i>Acc</i>	PEMD	<i>Acc</i>	Foot Score F/B		BLX	<i>Acc</i>
1.7	66	1.7	65	1 / 2		135.1	49

Purchaser _____ \$ _____

Lot 108		Tag No. 497		Triplet		Sire NA190012	
BWT	<i>Acc</i>	MWWT	<i>Acc</i>	PWT	<i>Acc</i>	WR	<i>Acc</i>
0.4	63	0.1	50	8.5	69	0.07	44
PFAT	<i>Acc</i>	PEMD	<i>Acc</i>	Foot Score F/B		BLX	<i>Acc</i>
0.0	69	1.6	67	1 / 1		129.7	47

Purchaser _____ \$ _____

Lot 109		Tag No. 257		Single		Sire IN194707	
BWT	<i>Acc</i>	MWWT	<i>Acc</i>	PWT	<i>Acc</i>	WR	<i>Acc</i>
0.4	61	0.6	49	11.0	67	0.12	44
PFAT	<i>Acc</i>	PEMD	<i>Acc</i>	Foot Score F/B		BLX	<i>Acc</i>
2.5	63	1.5	62	1 / 2		141.2	47

Purchaser _____ \$ _____



Lot 109

Lot 110		Tag No. 74		Twin		Sire NA200505	
BWT	<i>Acc</i>	MWWT	<i>Acc</i>	PWT	<i>Acc</i>	WR	<i>Acc</i>
-0.1	61	0.5	50	8.7	67	0.05	45
PFAT	<i>Acc</i>	PEMD	<i>Acc</i>	Foot Score F/B		BLX	<i>Acc</i>
0.7	67	2.3	65	1 / 1		134.6	47

Purchaser _____ \$ _____



FOR LOCAL

AGRIBUSINESS SERVICE

Elders Dubbo have a dedicated local team committed to our clients and our community. Our team live your business like you do. Experience the difference and contact the Elders Branch today about all your agribusiness needs.

Scott Thrift	Stud Stock Specialist	0417 660 260
Martin Simmons	Branch Manager	0427 854 825
Chris O'Donnell	Farm Supplies Manager	0457 709 343

Elders Dubbo

p: 02 6883 1800

e: dg_dubbo@elders.com.au

Elders



SuperBorders is the brand name for Border Leicester rams that are of high genetic merit for a first cross production system. The official SuperBorder yellow ear tags allow Superborder rams to be easily identified.

To qualify as a SuperBorder a Border Leicester ram must be above the 50th percentile for the breed based on the BLX index (Border Leicester Cross Index). The 50th percentile index value is calculated based on the 15th of August LAMB-PLAN run each year. It is used to determine SuperBorder rams for that selling season. The BLX Index has been developed for production systems using Border Leicester sires crossed to Merino dams to produce first cross progeny. BLX balances maintaining mature size with significant improvements in early growth and reproduction. A higher BLX index targets animals that are more profitable in this production system.

Not all rams sold by SuperBorder members are necessarily SuperBorder quality, but are bred by committed, registered breeders striving for genetic gain. SuperBorder rams must be structurally sound and of good breed type.

The SuperBorders group is made up of a number of studs across five states who work together in meeting market requirements for objectively measured maternal genetics in the Australian Lamb Industry. SuperBorders members are industry leaders with longstanding involvement in research, trials and industry resource flocks.

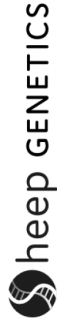
First cross lambs sired by 100% SuperBorder rams may be sold as 'Bred from SuperBorders'. Special yellow pen cards are available to identify these animals when sold in physical sales. Virtual yellow sale cards are also available for SuperBorders progeny sold on online sale platforms. Please speak with us if you would like either of these marketing materials.

4 Report:

Percentile Bands

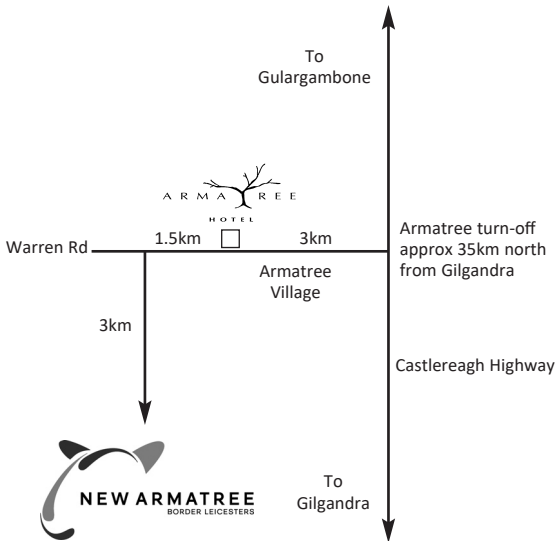
FIRST CROSS SIRE BREEDS

Analysis date: 15/08/2022



Band	BLX	BWT	PWT	AWT	MWWT	PEMD	PFAT	WR	CON	LS	ERA	IMF	SHEARF5
1	148.34	-0.1	13.01	16.66	2.35	2.08	1.81	0.18	0.07	0.11	0.05	0.33	-1.97
5	137.99	0.01	11.53	14.66	1.84	1.59	1.06	0.13	0.05	0.06	0.04	0.15	-0.86
10	132.12	0.07	10.8	13.72	1.58	1.31	0.73	0.1	0.04	0.04	0.03	0.06	-0.32
20	126.65	0.14	9.91	12.61	1.26	0.98	0.4	0.07	0.03	0.01	0.03	-0.02	0.27
30	122.82	0.19	9.25	11.78	1.03	0.73	0.19	0.05	0.02	-0.01	0.02	-0.08	0.7
40	119.37	0.23	8.65	11.04	0.85	0.52	0.01	0.03	0.01	-0.03	0.02	-0.14	1.04
50	115.67	0.27	8.05	10.31	0.68	0.33	-0.16	0.01	0.01	-0.04	0.01	-0.18	1.35
60	111.4	0.3	7.39	9.54	0.51	0.14	-0.32	-0.01	0	-0.06	0.01	-0.23	1.64
70	107.34	0.34	6.65	8.73	0.34	-0.03	-0.48	-0.03	0	-0.07	0.01	-0.28	1.94
80	103.52	0.39	5.78	7.77	0.13	-0.25	-0.66	-0.05	-0.01	-0.09	0	-0.35	2.3
90	99.55	0.44	4.58	6.42	-0.19	-0.54	-0.92	-0.07	-0.01	-0.11	0	-0.45	2.87

'New Armatree' directions



Craig & Jenny

Peta & Jack

Thank you for supporting our sale.





For more information contact:
Craig 0428256593 or Jenny 0428422234
www.newarmatree.com.au